

PLEKHG3 Antibody (C-term)
Affinity Purified Rabbit Polyclonal Antibody (Pab)
Catalog # AP11167b

Specification

PLEKHG3 Antibody (C-term) - Product Information

Application	WB, IHC-P,E
Primary Accession	A1L390
Other Accession	NP_056364.1
Reactivity	Human
Host	Rabbit
Clonality	Polyclonal
Isotype	Rabbit IgG
Calculated MW	134412
Antigen Region	1178-1207

PLEKHG3 Antibody (C-term) - Additional Information

Gene ID 26030

Other Names

Pleckstrin homology domain-containing family G member 3, PH domain-containing family G member 3, PLEKHG3, KIAA0599

Target/Specificity

This PLEKHG3 antibody is generated from rabbits immunized with a KLH conjugated synthetic peptide between 1178-1207 amino acids from the C-terminal region of human PLEKHG3.

Dilution

WB~~1:1000

IHC-P~~1:50~100

E~~Use at an assay dependent concentration.

Format

Purified polyclonal antibody supplied in PBS with 0.09% (W/V) sodium azide. This antibody is purified through a protein A column, followed by peptide affinity purification.

Storage

Maintain refrigerated at 2-8°C for up to 2 weeks. For long term storage store at -20°C in small aliquots to prevent freeze-thaw cycles.

Precautions

PLEKHG3 Antibody (C-term) is for research use only and not for use in diagnostic or therapeutic procedures.

PLEKHG3 Antibody (C-term) - Protein Information

Name PLEKHG3 ([HGNC:20364](#))

Synonyms KIAA0599

Function Plays a role in controlling cell polarity and cell motility by selectively binding newly polymerized actin and activating RAC1 and CDC42 to enhance local actin polymerization.

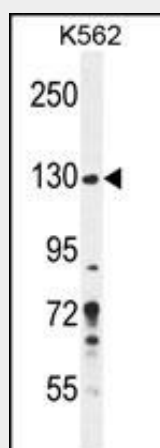
Cellular Location

Cytoplasm, cytoskeleton. Note=Colocalizes with actin at the leading edge of polarized cells.

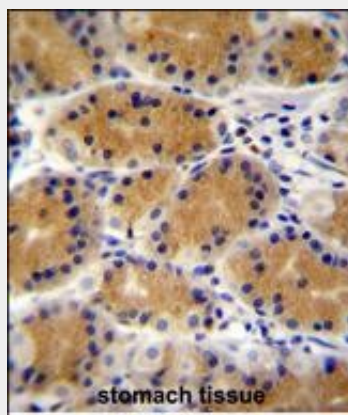
PLEKHG3 Antibody (C-term) - Protocols

Provided below are standard protocols that you may find useful for product applications.

- [Western Blot](#)
- [Blocking Peptides](#)
- [Dot Blot](#)
- [Immunohistochemistry](#)
- [Immunofluorescence](#)
- [Immunoprecipitation](#)
- [Flow Cytometry](#)
- [Cell Culture](#)

PLEKHG3 Antibody (C-term) - Images

PLEKHG3 Antibody (C-term) (Cat. #AP11167b) western blot analysis in K562 cell line lysates (35ug/lane). This demonstrates the PLEKHG3 antibody detected the PLEKHG3 protein (arrow).



PLEKHG3 Antibody (C-term) (Cat. #AP11167b) immunohistochemistry analysis in formalin fixed and paraffin embedded human stomach tissue followed by peroxidase conjugation of the secondary antibody and DAB staining. This data demonstrates the use of PLEKHG3 Antibody (C-term) for immunohistochemistry. Clinical relevance has not been evaluated.

PLEKHG3 Antibody (C-term) - References

Olsen, J.V., et al. Cell 127(3):635-648(2006)

PLEKHG3 Antibody (C-term) - Citations

- [PLEKHG3 enhances polarized cell migration by activating actin filaments at the cell front.](#)