

KLRAQ1 Antibody (Center)
Affinity Purified Rabbit Polyclonal Antibody (Pab)
Catalog # AP11169c**Specification**

KLRAQ1 Antibody (Center) - Product Information

Application	WB, IHC-P,E
Primary Accession	Q6ZMI0
Other Accession	NP_001180404.1 , NP_694539.1
Reactivity	Human
Host	Rabbit
Clonality	Polyclonal
Isotype	Rabbit IgG
Calculated MW	88314
Antigen Region	207-236

KLRAQ1 Antibody (Center) - Additional Information**Gene ID** 129285**Other Names**

Protein phosphatase 1 regulatory subunit 21, Coiled-coil domain-containing protein 128, KLRAQ motif-containing protein 1, PPP1R21, CCDC128, KLRAQ1

Target/Specificity

This KLRAQ1 antibody is generated from rabbits immunized with a KLH conjugated synthetic peptide between 207-236 amino acids from the Central region of human KLRAQ1.

Dilution

WB~~1:1000

IHC-P~~1:50~100

E~~Use at an assay dependent concentration.

Format

Purified polyclonal antibody supplied in PBS with 0.09% (W/V) sodium azide. This antibody is purified through a protein A column, followed by peptide affinity purification.

Storage

Maintain refrigerated at 2-8°C for up to 2 weeks. For long term storage store at -20°C in small aliquots to prevent freeze-thaw cycles.

Precautions

KLRAQ1 Antibody (Center) is for research use only and not for use in diagnostic or therapeutic procedures.

KLRAQ1 Antibody (Center) - Protein Information**Name** PPP1R21

Function Component of the FERRY complex (Five-subunit Endosomal Rab5 and RNA/ribosome intermediary) (PubMed:[37267905](#), PubMed:[37267906](#)). The FERRY complex directly interacts with mRNAs and RAB5A, and functions as a RAB5A effector involved in the localization and the distribution of specific mRNAs most likely by mediating their endosomal transport. The complex recruits mRNAs and ribosomes to early endosomes through direct mRNA-interaction (PubMed:[37267905](#)). In the complex, PPP1R21 serves as a binding hub connecting all five complex subunits and mediating the binding to mRNA and early endosomes via RAB5A (PubMed:[37267906](#)). Putative regulator of protein phosphatase 1 (PP1) activity (PubMed:[19389623](#)). May play a role in the endosomal sorting process or in endosome maturation pathway (Probable) (PubMed:[30520571](#)).

Cellular Location

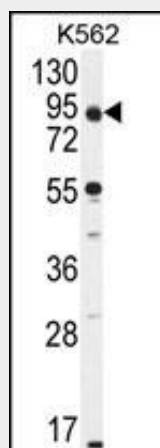
Early endosome

KLRAQ1 Antibody (Center) - Protocols

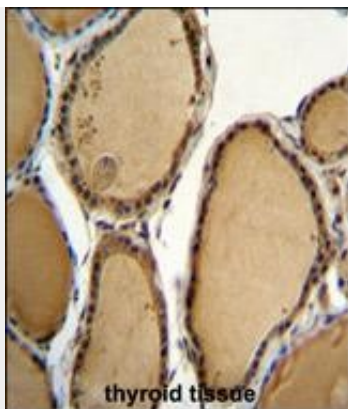
Provided below are standard protocols that you may find useful for product applications.

- [Western Blot](#)
- [Blocking Peptides](#)
- [Dot Blot](#)
- [Immunohistochemistry](#)
- [Immunofluorescence](#)
- [Immunoprecipitation](#)
- [Flow Cytometry](#)
- [Cell Culture](#)

KLRAQ1 Antibody (Center) - Images



KLRAQ1 Antibody (Center) (Cat. #AP11169c) western blot analysis in K562 cell line lysates (35ug/lane). This demonstrates the KLRAQ1 antibody detected the KLRAQ1 protein (arrow).



KLRAQ1 Antibody (Center) (Cat. #AP11169c) immunohistochemistry analysis in formalin fixed and paraffin embedded human thyroid tissue followed by peroxidase conjugation of the secondary antibody and DAB staining. This data demonstrates the use of KLRAQ1 Antibody (Center) for immunohistochemistry. Clinical relevance has not been evaluated.

KLRAQ1 Antibody (Center) - References

Ota, T., et al. Nat. Genet. 36(1):40-45(2004)