

NXPH4 Antibody (C-term)
Affinity Purified Rabbit Polyclonal Antibody (Pab)
Catalog # AP11180b**Specification**

NXPH4 Antibody (C-term) - Product Information

Application	FC, WB,E
Primary Accession	O95158
Other Accession	O9Z2N4 , NP_009155.1
Reactivity	Human
Predicted	Rat
Host	Rabbit
Clonality	Polyclonal
Isotype	Rabbit IgG
Calculated MW	33065
Antigen Region	219-248

NXPH4 Antibody (C-term) - Additional Information**Gene ID** 11247**Other Names**

Neurexophilin-4, NXPH4, NPH4

Target/Specificity

This NXPH4 antibody is generated from rabbits immunized with a KLH conjugated synthetic peptide between 219-248 amino acids from the C-terminal region of human NXPH4.

Dilution

FC~~1:10~50

WB~~1:1000

E~~Use at an assay dependent concentration.

Format

Purified polyclonal antibody supplied in PBS with 0.09% (W/V) sodium azide. This antibody is purified through a protein A column, followed by peptide affinity purification.

Storage

Maintain refrigerated at 2-8°C for up to 2 weeks. For long term storage store at -20°C in small aliquots to prevent freeze-thaw cycles.

Precautions

NXPH4 Antibody (C-term) is for research use only and not for use in diagnostic or therapeutic procedures.

NXPH4 Antibody (C-term) - Protein Information**Name** NXPH4

Synonyms NPH4

Function May be signaling molecules that resemble neuropeptides and that act by binding to alpha-neurexins and possibly other receptors.

Cellular Location

Secreted.

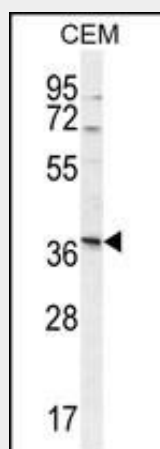
Tissue Location

Expressed in brain, spleen, and testis.

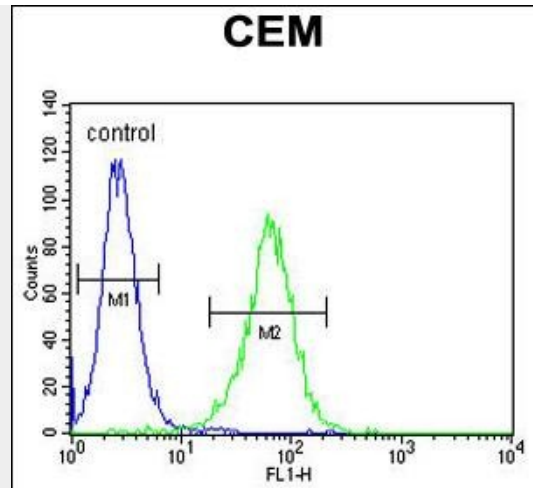
NXPH4 Antibody (C-term) - Protocols

Provided below are standard protocols that you may find useful for product applications.

- [Western Blot](#)
- [Blocking Peptides](#)
- [Dot Blot](#)
- [Immunohistochemistry](#)
- [Immunofluorescence](#)
- [Immunoprecipitation](#)
- [Flow Cytometry](#)
- [Cell Culture](#)

NXPH4 Antibody (C-term) - Images

NXPH4 Antibody (C-term) (Cat. #AP11180b) western blot analysis in CEM cell line lysates (35ug/lane). This demonstrates the NXPH4 antibody detected the NXPH4 protein (arrow).



NXPH4 Antibody (C-term) (Cat. #AP11180b) flow cytometric analysis of CEM cells (right histogram) compared to a negative control cell (left histogram). FITC-conjugated goat-anti-rabbit secondary antibodies were used for the analysis.

NXPH4 Antibody (C-term) - Background

An adhesion molecule that interacts with extracellular matrix molecules in developing teeth and may play important roles in differentiation and maintenance of odontoblasts as well as in dentin formation (By similarity).

NXPH4 Antibody (C-term) - References

Lamesch, P., et al. Genomics 89(3):307-315(2007)
Clark, H.F., et al. Genome Res. 13(10):2265-2270(2003)
Missler, M., et al. J. Neurosci. 18(10):3630-3638(1998)