

**THEMIS Antibody (C-term)**  
**Affinity Purified Rabbit Polyclonal Antibody (Pab)**  
**Catalog # AP11184b****Specification**

---

**THEMIS Antibody (C-term) - Product Information**

Application	WB, IHC-P,E
Primary Accession	<a href="#">Q8N1K5</a>
Other Accession	<a href="#">NP_001010923.1</a> , <a href="#">NP_001158157.1</a>
Reactivity	Mouse
Host	Rabbit
Clonality	Polyclonal
Isotype	Rabbit IgG
Calculated MW	73452
Antigen Region	559-588

**THEMIS Antibody (C-term) - Additional Information****Gene ID** 387357**Other Names**

Protein THEMIS, Thymocyte-expressed molecule involved in selection, THEMIS, C6orf190, C6orf207

**Target/Specificity**

This THEMIS antibody is generated from rabbits immunized with a KLH conjugated synthetic peptide between 559-588 amino acids from the C-terminal region of human THEMIS.

**Dilution**

WB~~1:1000

IHC-P~~1:50~100

E~~Use at an assay dependent concentration.

**Format**

Purified polyclonal antibody supplied in PBS with 0.09% (W/V) sodium azide. This antibody is purified through a protein A column, followed by peptide affinity purification.

**Storage**

Maintain refrigerated at 2-8°C for up to 2 weeks. For long term storage store at -20°C in small aliquots to prevent freeze-thaw cycles.

**Precautions**

THEMIS Antibody (C-term) is for research use only and not for use in diagnostic or therapeutic procedures.

**THEMIS Antibody (C-term) - Protein Information****Name** THEMIS

**Synonyms** C6orf190, C6orf207

**Function** Plays a central role in late thymocyte development by controlling both positive and negative T-cell selection. Required to sustain and/or integrate signals required for proper lineage commitment and maturation of T-cells. Regulates T-cell development through T-cell antigen receptor (TCR) signaling and in particular through the regulation of calcium influx and phosphorylation of Erk.

**Cellular Location**

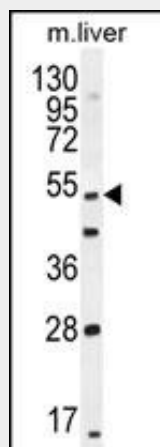
Cytoplasm {ECO:0000250|UniProtKB:Q8BGW0}. Nucleus {ECO:0000250|UniProtKB:Q8BGW0}

**THEMIS Antibody (C-term) - Protocols**

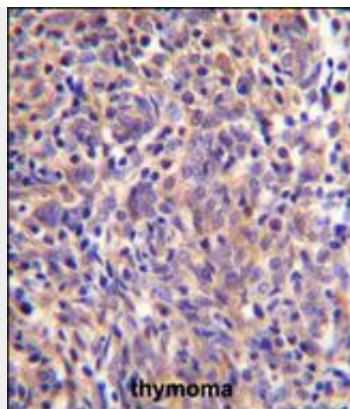
Provided below are standard protocols that you may find useful for product applications.

- [Western Blot](#)
- [Blocking Peptides](#)
- [Dot Blot](#)
- [Immunohistochemistry](#)
- [Immunofluorescence](#)
- [Immunoprecipitation](#)
- [Flow Cytometry](#)
- [Cell Culture](#)

**THEMIS Antibody (C-term) - Images**



THEMIS Antibody (C-term) (Cat. #AP11184b) western blot analysis in mouse liver tissue lysates (35ug/lane). This demonstrates the THEMIS antibody detected the THEMIS protein (arrow).



THEMIS Antibody (C-term) (Cat. #AP11184b) immunohistochemistry analysis in formalin fixed and paraffin embedded human thymoma followed by peroxidase conjugation of the secondary antibody and DAB staining. This data demonstrates the use of THEMIS Antibody (C-term) for immunohistochemistry. Clinical relevance has not been evaluated.

#### **THEMIS Antibody (C-term) - Background**

This gene encodes a protein that plays a regulatory role in both positive and negative T-cell selection during late thymocyte development. The protein functions through T-cell antigen receptor signaling, and is necessary for proper lineage commitment and maturation of T-cells. Alternative splicing results in multiple transcript variants.

#### **THEMIS Antibody (C-term) - References**

Bailey, S.D., et al. Diabetes Care 33(10):2250-2253(2010)  
Dubois, P.C., et al. Nat. Genet. 42(4):295-302(2010)  
Bhatti, P., et al. Radiat. Res. 173(2):214-224(2010)  
Talmud, P.J., et al. Am. J. Hum. Genet. 85(5):628-642(2009)  
Patrick, M.S., et al. Proc. Natl. Acad. Sci. U.S.A. 106(38):16345-16350(2009)