

**CCNG1 Antibody (C-term)**  
**Purified Rabbit Polyclonal Antibody (Pab)**  
**Catalog # AP11209b****Specification**

---

**CCNG1 Antibody (C-term) - Product Information**

Application	FC, WB,E
Primary Accession	<a href="#">P51959</a>
Other Accession	<a href="#">Q52QT8</a> , <a href="#">NP_004051</a>
Reactivity	Mouse
Predicted	Pig
Host	Rabbit
Clonality	Polyclonal
Isotype	Rabbit IgG
Antigen Region	243-272

**CCNG1 Antibody (C-term) - Additional Information****Gene ID** 900**Other Names**

Cyclin-G1, Cyclin-G, CCNG1, CCNG, CYCG1

**Target/Specificity**

This CCNG1 antibody is generated from rabbits immunized with a KLH conjugated synthetic peptide between 243-272 amino acids from the C-terminal region of human CCNG1.

**Dilution**

FC~~1:10~50

WB~~1:1000

E~~Use at an assay dependent concentration.

**Format**

Purified polyclonal antibody supplied in PBS with 0.09% (W/V) sodium azide. This antibody is prepared by Saturated Ammonium Sulfate (SAS) precipitation followed by dialysis against PBS.

**Storage**

Maintain refrigerated at 2-8°C for up to 2 weeks. For long term storage store at -20°C in small aliquots to prevent freeze-thaw cycles.

**Precautions**

CCNG1 Antibody (C-term) is for research use only and not for use in diagnostic or therapeutic procedures.

**CCNG1 Antibody (C-term) - Protein Information****Name** CCNG1

**Synonyms** CCNG, CYCG1

**Function** May play a role in growth regulation. Is associated with G2/M phase arrest in response to DNA damage. May be an intermediate by which p53 mediates its role as an inhibitor of cellular proliferation (By similarity).

**Cellular Location**

Nucleus. Note=DNA replication foci after DNA damage

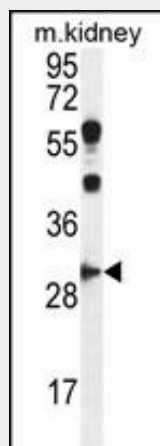
**Tissue Location**

High levels in skeletal muscle, ovary, kidney and colon

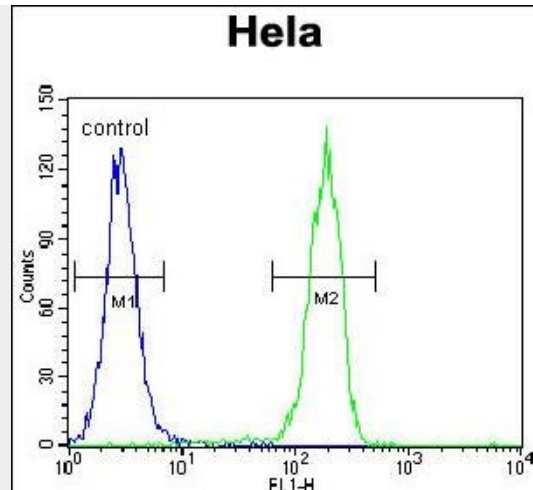
**CCNG1 Antibody (C-term) - Protocols**

Provided below are standard protocols that you may find useful for product applications.

- [Western Blot](#)
- [Blocking Peptides](#)
- [Dot Blot](#)
- [Immunohistochemistry](#)
- [Immunofluorescence](#)
- [Immunoprecipitation](#)
- [Flow Cytometry](#)
- [Cell Culture](#)

**CCNG1 Antibody (C-term) - Images**

CCNG1 Antibody (C-term) (Cat. #AP11209b) western blot analysis in mouse kidney tissue lysates (35ug/lane). This demonstrates the CCNG1 antibody detected the CCNG1 protein (arrow).



CCNG1 Antibody (C-term) (Cat. #AP11209b) flow cytometric analysis of HeLa cells (right histogram) compared to a negative control cell (left histogram). FITC-conjugated goat-anti-rabbit secondary antibodies were used for the analysis.

#### **CCNG1 Antibody (C-term) - Background**

The eukaryotic cell cycle is governed by cyclin-dependent protein kinases (CDKs) whose activities are regulated by cyclins and CDK inhibitors. The protein encoded by this gene is a member of the cyclin family and contains the cyclin box. The encoded protein lacks the protein destabilizing (PEST) sequence that is present in other family members. Transcriptional activation of this gene can be induced by tumor protein p53. Two transcript variants encoding the same protein have been identified for this gene. [provided by RefSeq].

#### **CCNG1 Antibody (C-term) - References**

Cunningham, J.M., et al. Br. J. Cancer 101(8):1461-1468(2009) Fornari, F., et al. Cancer Res. 69(14):5761-5767(2009) Li, H., et al. Mol. Cell. Biol. 29(3):919-928(2009) Piscopo, D.M., et al. Cancer Res. 68(14):5581-5590(2008) Seo, H.R., et al. J. Biol. Chem. 283(23):15601-15610(2008)

#### **CCNG1 Antibody (C-term) - Citations**

- [MicroRNA-9 inhibition of cell proliferation and identification of novel miR-9 targets by transcriptome profiling in breast cancer cells.](#)