

**EDN3 Antibody (C-term)**  
**Affinity Purified Rabbit Polyclonal Antibody (Pab)**  
**Catalog # AP11222b****Specification**

---

**EDN3 Antibody (C-term) - Product Information**

Application	WB,E
Primary Accession	<a href="#">P14138</a>
Other Accession	<a href="#">Q03229</a> , <a href="#">NP_000105</a>
Reactivity	Human
Host	Rabbit
Clonality	Polyclonal
Isotype	Rabbit IgG
Calculated MW	25454
Antigen Region	168-197

**EDN3 Antibody (C-term) - Additional Information****Gene ID** 1908**Other Names**

Endothelin-3, ET-3, Preproendothelin-3, PPET3, EDN3

**Target/Specificity**

This EDN3 antibody is generated from rabbits immunized with a KLH conjugated synthetic peptide between 168-197 amino acids from the C-terminal region of human EDN3.

**Dilution**

WB~~1:1000

E~~Use at an assay dependent concentration.

**Format**

Purified polyclonal antibody supplied in PBS with 0.09% (W/V) sodium azide. This antibody is purified through a protein A column, followed by peptide affinity purification.

**Storage**

Maintain refrigerated at 2-8°C for up to 2 weeks. For long term storage store at -20°C in small aliquots to prevent freeze-thaw cycles.

**Precautions**

EDN3 Antibody (C-term) is for research use only and not for use in diagnostic or therapeutic procedures.

**EDN3 Antibody (C-term) - Protein Information****Name** EDN3**Function** Endothelins are endothelium-derived vasoconstrictor peptides.

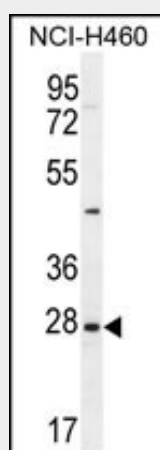
**Cellular Location**  
Secreted.**Tissue Location**

Expressed in trophoblasts and placental stem villi vessels, but not in cultured placental smooth muscle cells

**EDN3 Antibody (C-term) - Protocols**

Provided below are standard protocols that you may find useful for product applications.

- [Western Blot](#)
- [Blocking Peptides](#)
- [Dot Blot](#)
- [Immunohistochemistry](#)
- [Immunofluorescence](#)
- [Immunoprecipitation](#)
- [Flow Cytometry](#)
- [Cell Culture](#)

**EDN3 Antibody (C-term) - Images**

EDN3 Antibody (C-term) (Cat. #AP11222b) western blot analysis in NCI-H460 cell line lysates (35ug/lane). This demonstrates the EDN3 antibody detected the EDN3 protein (arrow).

**EDN3 Antibody (C-term) - Background**

The protein encoded by this gene is a member of the endothelin family. Endothelins are endothelium-derived vasoactive peptides involved in a variety of biological functions. The active form of this protein is a 21 amino acid peptide processed from the precursor protein. The active peptide is a ligand for endothelin receptor type B (EDNRB). The interaction of this endothelin with EDNRB is essential for development of neural crest-derived cell lineages, such as melanocytes and enteric neurons. Mutations in this gene and EDNRB have been associated with Hirschsprung disease (HSCR) and Waardenburg syndrome (WS), which are congenital disorders involving neural crest-derived cells. Four alternatively spliced transcript variants encoding three distinct isoforms have been observed.

**EDN3 Antibody (C-term) - References**

Bailey, S.D., et al. Diabetes Care 33(10):2250-2253(2010)  
Darrah, R., et al. Physiol. Genomics 41(1):71-77(2010)  
Sanchez-Mejias, A., et al. Genet. Med. 12(1):39-43(2010)  
Broasca, V., et al. Rom J Morphol Embryol 51(2):283-288(2010)  
Talmud, P.J., et al. Am. J. Hum. Genet. 85(5):628-642(2009)