

**IRF2 Antibody (Center)**  
**Affinity Purified Rabbit Polyclonal Antibody (Pab)**  
**Catalog # AP11225C****Specification**

---

**IRF2 Antibody (Center) - Product Information**

Application	WB,E
Primary Accession	<a href="#">P14316</a>
Other Accession	<a href="#">NP_002190</a>
Reactivity	Human, Mouse
Host	Rabbit
Clonality	Polyclonal
Isotype	Rabbit IgG
Antigen Region	225-255

**IRF2 Antibody (Center) - Additional Information****Gene ID** 3660**Other Names**

Interferon regulatory factor 2, IRF-2, IRF2

**Target/Specificity**

This IRF2 antibody is generated from rabbits immunized with a KLH conjugated synthetic peptide between 225-255 amino acids from the Central region of human IRF2.

**Dilution**

WB~~1:1000

E~~Use at an assay dependent concentration.

**Format**

Purified polyclonal antibody supplied in PBS with 0.09% (W/V) sodium azide. This antibody is purified through a protein A column, followed by peptide affinity purification.

**Storage**

Maintain refrigerated at 2-8°C for up to 2 weeks. For long term storage store at -20°C in small aliquots to prevent freeze-thaw cycles.

**Precautions**

IRF2 Antibody (Center) is for research use only and not for use in diagnostic or therapeutic procedures.

**IRF2 Antibody (Center) - Protein Information****Name** IRF2

**Function** Specifically binds to the upstream regulatory region of type I IFN and IFN-inducible MHC class I genes (the interferon consensus sequence (ICS)) and represses those genes. Also acts as an

activator for several genes including H4 and IL7. Constitutively binds to the ISRE promoter to activate IL7. Involved in cell cycle regulation through binding the site II (HiNF-M) promoter region of H4 and activating transcription during cell growth. Antagonizes IRF1 transcriptional activation.

**Cellular Location**

Nucleus.

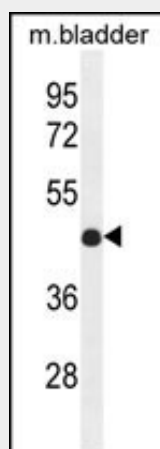
**Tissue Location**

Expressed throughout the epithelium of the colon. Also expressed in lamina propria.

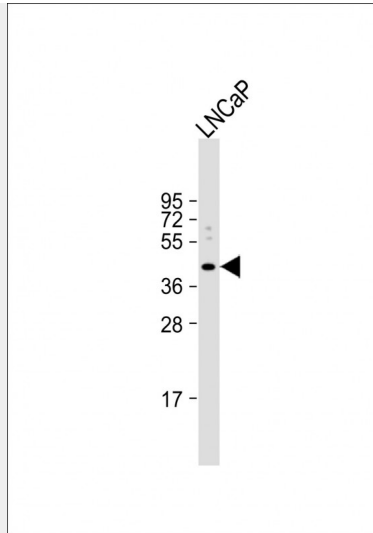
**IRF2 Antibody (Center) - Protocols**

Provided below are standard protocols that you may find useful for product applications.

- [Western Blot](#)
- [Blocking Peptides](#)
- [Dot Blot](#)
- [Immunohistochemistry](#)
- [Immunofluorescence](#)
- [Immunoprecipitation](#)
- [Flow Cytometry](#)
- [Cell Culture](#)

**IRF2 Antibody (Center) - Images**

IRF2 Antibody (Center) (Cat. #AP11225c) western blot analysis in mouse bladder tissue lysates (35ug/lane). This demonstrates the IRF2 antibody detected the IRF2 protein (arrow).



Anti-IRF2 Antibody (Center) at 1:1000 dilution + LNCaP whole cell lysate Lysates/proteins at 20 µg per lane. Secondary Goat Anti-Rabbit IgG, (H+L), Peroxidase conjugated at 1/10000 dilution. Predicted band size : 39 kDa Blocking/Dilution buffer: 5% NFDM/TBST.

#### **IRF2 Antibody (Center) - Background**

IRF2 encodes interferon regulatory factor 2, a member of the interferon regulatory transcription factor (IRF) family. IRF2 competitively inhibits the IRF1-mediated transcriptional activation of interferons alpha and beta, and presumably other genes that employ IRF1 for transcription activation. However, IRF2 also functions as a transcriptional activator of histone H4. [provided by RefSeq].

#### **IRF2 Antibody (Center) - References**

Rose, J.E., et al. Mol. Med. 16 (7-8), 247-253 (2010) :  
Lace, M.J., et al. Virology 399(2):270-279(2010)  
Masumi, A., et al. Biochem. Biophys. Res. Commun. 391(4):1623-1628(2010)  
Daley, D., et al. Hum. Genet. 125(4):445-459(2009)  
Dhar, D., et al. PLoS ONE 4 (9), E7049 (2009) :

#### **IRF2 Antibody (Center) - Citations**

- [Embryonic stem cell-specific microRNAs contribute to pluripotency by inhibiting regulators of multiple differentiation pathways.](#)