

GGH Antibody (N-term)
Affinity Purified Rabbit Polyclonal Antibody (Pab)
Catalog # AP11236a

Specification

GGH Antibody (N-term) - Product Information

Application	FC, IHC-P, WB,E
Primary Accession	O92820
Other Accession	NP_003869
Reactivity	Human
Host	Rabbit
Clonality	Polyclonal
Isotype	Rabbit IgG
Antigen Region	7-34

GGH Antibody (N-term) - Additional Information

Gene ID 8836

Other Names

Gamma-glutamyl hydrolase, Conjugase, GH, Gamma-Glu-X carboxypeptidase, GGH

Target/Specificity

This GGH antibody is generated from rabbits immunized with a KLH conjugated synthetic peptide between 7-34 amino acids from the N-terminal region of human GGH.

Dilution

FC~~1:10~50

IHC-P~~1:50~100

WB~~1:2000

E~~Use at an assay dependent concentration.

Format

Purified polyclonal antibody supplied in PBS with 0.09% (W/V) sodium azide. This antibody is purified through a protein A column, followed by peptide affinity purification.

Storage

Maintain refrigerated at 2-8°C for up to 2 weeks. For long term storage store at -20°C in small aliquots to prevent freeze-thaw cycles.

Precautions

GGH Antibody (N-term) is for research use only and not for use in diagnostic or therapeutic procedures.

GGH Antibody (N-term) - Protein Information

Name GGH ([HGNC:4248](#))

Function Hydrolyzes the polyglutamate sidechains of pteroylpolyglutamates. Progressively removes gamma-glutamyl residues from pteroylpoly-gamma-glutamate to yield pteroyl-alpha-glutamate (folic acid) and free glutamate (PubMed:[11005824](#), PubMed:[8816764](#)). May play an important role in the bioavailability of dietary pteroylpolyglutamates and in the metabolism of pteroylpolyglutamates and antifolates.

Cellular Location

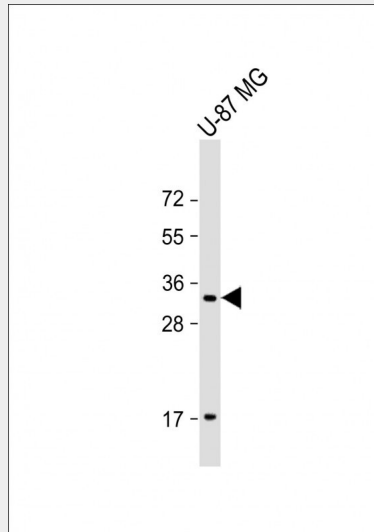
Secreted, extracellular space. Lysosome. Melanosome. Note=While its intracellular location is primarily the lysosome, most of the enzyme activity is secreted Identified by mass spectrometry in melanosome fractions from stage I to stage IV.

GGH Antibody (N-term) - Protocols

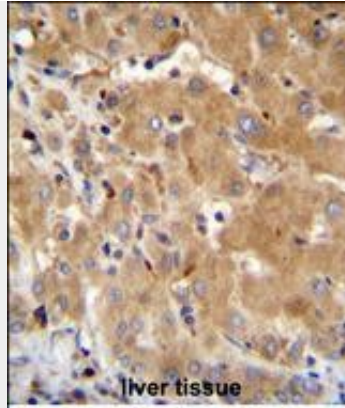
Provided below are standard protocols that you may find useful for product applications.

- [Western Blot](#)
- [Blocking Peptides](#)
- [Dot Blot](#)
- [Immunohistochemistry](#)
- [Immunofluorescence](#)
- [Immunoprecipitation](#)
- [Flow Cytometry](#)
- [Cell Culture](#)

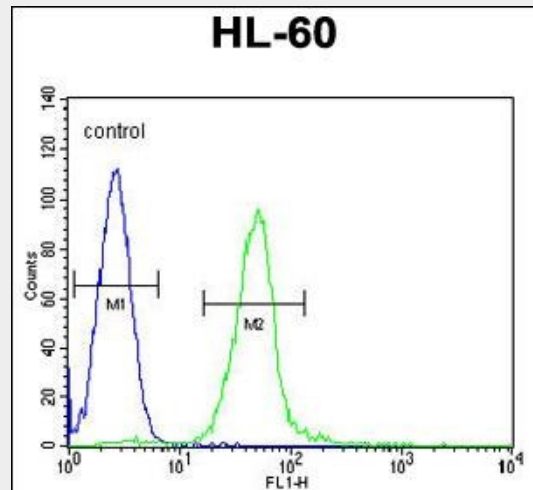
GGH Antibody (N-term) - Images



Anti-GGH Antibody (N-term) at 1:2000 dilution + U-87 MG whole cell lysate Lysates/proteins at 20 µg per lane. Secondary Goat Anti-Rabbit IgG, (H+L), Peroxidase conjugated at 1/10000 dilution. Predicted band size : 36 kDa Blocking/Dilution buffer: 5% NFDN/TBST.



GGH Antibody (N-term) (Cat. #AP11236a) immunohistochemistry analysis in formalin fixed and paraffin embedded human liver tissue followed by peroxidase conjugation of the secondary antibody and DAB staining. This data demonstrates the use of GGH Antibody (N-term) for immunohistochemistry. Clinical relevance has not been evaluated.



GGH Antibody (N-term) (Cat. #AP11236a) flow cytometric analysis of HL-60 cells (right histogram) compared to a negative control cell (left histogram). FITC-conjugated goat-anti-rabbit secondary antibodies were used for the analysis.

GGH Antibody (N-term) - Background

This gene catalyzes the hydrolysis of polygamma-glutamates and antifolypoly-gamma-glutamates by the removal of gamma-linked polyglutamates and glutamate. [provided by RefSeq].

GGH Antibody (N-term) - References

Adjei, A.A., et al. J Thorac Oncol 5(9):1346-1353(2010)
 Liu, C.Y., et al. Carcinogenesis 31(7):1259-1263(2010)
 Organista-Nava, J., et al. Leuk. Res. 34(6):728-732(2010)
 Figueiredo, J.C., et al. Cancer Causes Control 21(4):597-608(2010)
 Dervieux, T., et al. Pharmacogenet. Genomics (2009) In press :