

**PRRT1 Antibody (Center)**  
**Affinity Purified Rabbit Polyclonal Antibody (Pab)**  
**Catalog # AP11241c**

**Specification**

---

**PRRT1 Antibody (Center) - Product Information**

Application	FC, WB,E
Primary Accession	<a href="#">O99946</a>
Other Accession	<a href="#">NP_085154.3</a>
Reactivity	Human
Host	Rabbit
Clonality	Polyclonal
Isotype	Rabbit IgG
Antigen Region	240-269

**PRRT1 Antibody (Center) - Additional Information**

**Gene ID** 80863

**Other Names**

Proline-rich transmembrane protein 1, Dispanin subfamily D member 1, DSPD1, PRRT1, C6orf31, NG5

**Target/Specificity**

This PRRT1 antibody is generated from rabbits immunized with a KLH conjugated synthetic peptide between 240-269 amino acids from the Central region of human PRRT1.

**Dilution**

FC~~1:10~50

WB~~1:1000

E~~Use at an assay dependent concentration.

**Format**

Purified polyclonal antibody supplied in PBS with 0.09% (W/V) sodium azide. This antibody is purified through a protein A column, followed by peptide affinity purification.

**Storage**

Maintain refrigerated at 2-8°C for up to 2 weeks. For long term storage store at -20°C in small aliquots to prevent freeze-thaw cycles.

**Precautions**

PRRT1 Antibody (Center) is for research use only and not for use in diagnostic or therapeutic procedures.

**PRRT1 Antibody (Center) - Protein Information**

**Name** PRRT1 ([HGNC:13943](#))

**Function** Required to maintain a pool of extrasynaptic AMPA-regulated glutamate receptors (AMPA) which is necessary for synapse development and function. Regulates basal AMPAR function and synaptic transmission during development but is dispensable at mature hippocampal synapses. Plays a role in regulating basal phosphorylation levels of glutamate receptor GRIA1 and promotes GRIA1 and GRIA2 cell surface expression.

**Cellular Location**

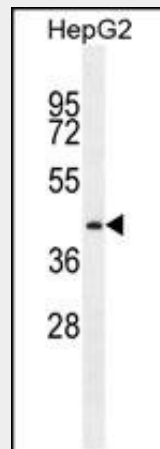
Cell membrane {ECO:0000250|UniProtKB:Q6MG82}; Single-pass type II membrane protein {ECO:0000250|UniProtKB:Q6MG82} Synapse {ECO:0000250|UniProtKB:Q6MG82}

**PRRT1 Antibody (Center) - Protocols**

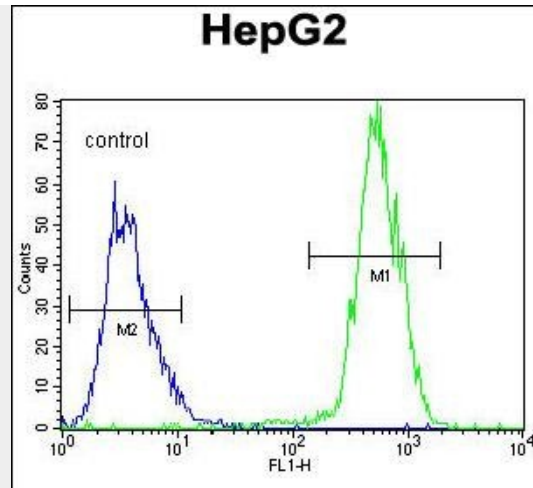
Provided below are standard protocols that you may find useful for product applications.

- [Western Blot](#)
- [Blocking Peptides](#)
- [Dot Blot](#)
- [Immunohistochemistry](#)
- [Immunofluorescence](#)
- [Immunoprecipitation](#)
- [Flow Cytometry](#)
- [Cell Culture](#)

**PRRT1 Antibody (Center) - Images**



PRRT1 Antibody (Center) (Cat. #AP11241c) western blot analysis in HepG2 cell line lysates (35ug/lane). This demonstrates the PRRT1 antibody detected the PRRT1 protein (arrow).



PRRT1 Antibody (Center) (Cat. #AP11241c) flow cytometric analysis of HepG2 cells (right histogram) compared to a negative control cell (left histogram). FITC-conjugated goat-anti-rabbit secondary antibodies were used for the analysis.

#### **PRRT1 Antibody (Center) - References**

- Barcellos, L.F., et al. PLoS Genet. 5 (10), E1000696 (2009) :  
McKinnon, E., et al. Diabetes Obes Metab 11 SUPPL 1, 92-100 (2009) :  
Vignal, C., et al. Arthritis Rheum. 60(1):53-62(2009)  
Xie, T., et al. Genome Res. 13(12):2621-2636(2003)