

**KRT73 Antibody (C-term)**  
**Affinity Purified Rabbit Polyclonal Antibody (Pab)**  
**Catalog # AP11248b****Specification**

---

**KRT73 Antibody (C-term) - Product Information**

Application	IHC-P, WB,E
Primary Accession	<a href="#">Q86Y46</a>
Other Accession	<a href="#">NP_778238.1</a>
Reactivity	Human
Host	Rabbit
Clonality	Polyclonal
Isotype	Rabbit IgG
Calculated MW	58923
Antigen Region	493-522

**KRT73 Antibody (C-term) - Additional Information****Gene ID** 319101**Other Names**

Keratin, type II cytoskeletal 73, Cytokeratin-73, CK-73, Keratin-73, K73, Type II inner root sheath-specific keratin-K6irs3, Type-II keratin Kb36, KRT73, K6IRS3, KB36, KRT6IRS3

**Target/Specificity**

This KRT73 antibody is generated from rabbits immunized with a KLH conjugated synthetic peptide between 493-522 amino acids from the C-terminal region of human KRT73.

**Dilution**

IHC-P~~1:10~50

WB~~1:1000

E~~Use at an assay dependent concentration.

**Format**

Purified polyclonal antibody supplied in PBS with 0.09% (W/V) sodium azide. This antibody is purified through a protein A column, followed by peptide affinity purification.

**Storage**

Maintain refrigerated at 2-8°C for up to 2 weeks. For long term storage store at -20°C in small aliquots to prevent freeze-thaw cycles.

**Precautions**

KRT73 Antibody (C-term) is for research use only and not for use in diagnostic or therapeutic procedures.

**KRT73 Antibody (C-term) - Protein Information****Name** KRT73

**Synonyms** K6IRS3, KB36, KRT6IRS3

**Function** Has a role in hair formation. Specific component of keratin intermediate filaments in the inner root sheath (IRS) of the hair follicle (Probable).

**Tissue Location**

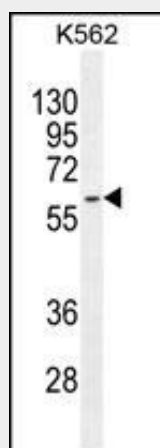
Highly expressed in hair follicles from scalp. In hair, it is specifically present in the inner root sheath (IRS) of the hair follicle. Present in the IRS cuticle, but not in Henle or Huxley layers of the IRS. In the IRS cuticle, it is expressed between the lowermost bulb region of the cuticle and the region where Henle cells undergo abrupt terminal differentiation. Detected up to the uppermost cortex region where cuticle cells terminally differentiate (at protein level).

**KRT73 Antibody (C-term) - Protocols**

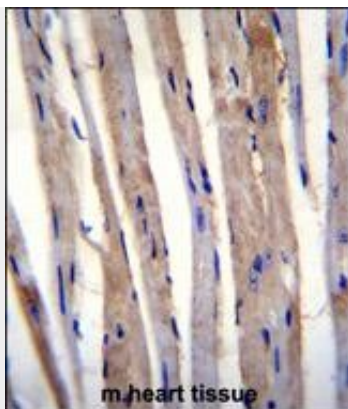
Provided below are standard protocols that you may find useful for product applications.

- [Western Blot](#)
- [Blocking Peptides](#)
- [Dot Blot](#)
- [Immunohistochemistry](#)
- [Immunofluorescence](#)
- [Immunoprecipitation](#)
- [Flow Cytometry](#)
- [Cell Culture](#)

**KRT73 Antibody (C-term) - Images**



KRT73 Antibody (C-term) (Cat. #AP11248b) western blot analysis in K562 cell line lysates (35ug/lane). This demonstrates the KRT73 antibody detected the KRT73 protein (arrow).



KRT73 Antibody (C-term) (Cat. #AP11248b) immunohistochemistry analysis in formalin fixed and paraffin embedded m.heart tissue followed by peroxidase conjugation of the secondary antibody and DAB staining. This data demonstrates the use of KRT73 Antibody (C-term) for immunohistochemistry. Clinical relevance has not been evaluated.

#### **KRT73 Antibody (C-term) - Background**

Keratins are intermediate filament proteins responsible for the structural integrity of epithelial cells and are subdivided into epithelial keratins and hair keratins. This gene encodes a protein that is expressed in the inner root sheath of hair follicles. The type II keratins are clustered in a region of chromosome 12q13.

#### **KRT73 Antibody (C-term) - References**

Schweizer, J., et al. J. Cell Biol. 174(2):169-174(2006)  
Langbein, L., et al. J. Invest. Dermatol. 120(4):512-522(2003)