

KRT25 Antibody (C-term)
Affinity Purified Rabbit Polyclonal Antibody (Pab)
Catalog # AP11252b**Specification**

KRT25 Antibody (C-term) - Product Information

Application	WB, FC,E
Primary Accession	O7Z3Z0
Other Accession	NP_853512.1
Reactivity	Human
Host	Rabbit
Clonality	Polyclonal
Isotype	Rabbit IgG
Calculated MW	49318
Antigen Region	380-408

KRT25 Antibody (C-term) - Additional Information**Gene ID** 147183**Other Names**

Keratin, type I cytoskeletal 25, Cytokeratin-25, CK-25, Keratin-25, K25, Keratin-25A, K25A, Type I inner root sheath-specific keratin-K25irs1, KRT25 (http://www.genenames.org/cgi-bin/gene_symbol_report?hgnc_id=30839)
HGNC:30839

Target/Specificity

This KRT25 antibody is generated from rabbits immunized with a KLH conjugated synthetic peptide between 380-408 amino acids from the C-terminal region of human KRT25.

Dilution

WB~~1:1000
FC~~1:10~50
E~~Use at an assay dependent concentration.

Format

Purified polyclonal antibody supplied in PBS with 0.09% (W/V) sodium azide. This antibody is purified through a protein A column, followed by peptide affinity purification.

Storage

Maintain refrigerated at 2-8°C for up to 2 weeks. For long term storage store at -20°C in small aliquots to prevent freeze-thaw cycles.

Precautions

KRT25 Antibody (C-term) is for research use only and not for use in diagnostic or therapeutic procedures.

KRT25 Antibody (C-term) - Protein Information

Name KRT25 ([HGNC:30839](#))

Function Essential for the proper assembly of type I and type II keratin protein complexes and formation of keratin intermediate filaments in the inner root sheath (irs) (By similarity). Plays a role in the cytoskeleton organization (PubMed:[26902920](#)).

Cellular Location

Cytoplasm {ECO:0000250|UniProtKB:Q8VCW2}.

Tissue Location

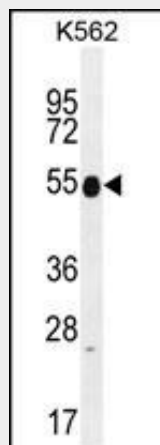
Strongly expressed in skin and scalp, and weak expression observed in thymus and tongue. In the hair follicle, expressed in Henle layer, Huxley layer and in the inner root sheath cuticle of the hair follicle. Expression extends from the bulb region up to the point of differentiation into the three layers. Also present in the medulla of beard hair (at protein level)

KRT25 Antibody (C-term) - Protocols

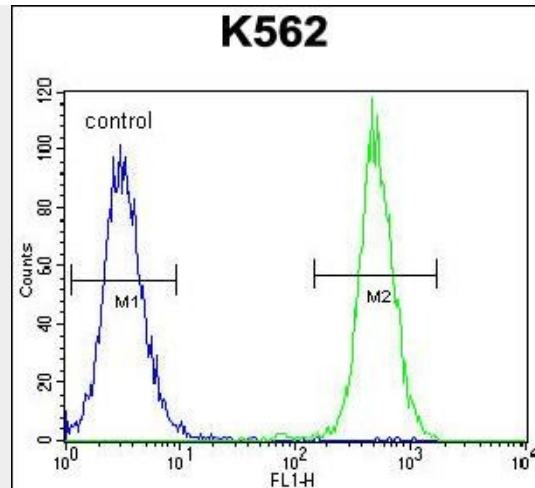
Provided below are standard protocols that you may find useful for product applications.

- [Western Blot](#)
- [Blocking Peptides](#)
- [Dot Blot](#)
- [Immunohistochemistry](#)
- [Immunofluorescence](#)
- [Immunoprecipitation](#)
- [Flow Cytometry](#)
- [Cell Culture](#)

KRT25 Antibody (C-term) - Images



KRT25 Antibody (C-term) (Cat. #AP11252b) western blot analysis in K562 cell line lysates (35ug/lane). This demonstrates the KRT25 antibody detected the KRT25 protein (arrow).



KRT25 Antibody (C-term) (Cat. #AP11252b) flow cytometric analysis of K562 cells (right histogram) compared to a negative control cell (left histogram). FITC-conjugated goat-anti-rabbit secondary antibodies were used for the analysis.

KRT25 Antibody (C-term) - Background

This gene encodes a member of the type I (acidic) keratin family, which belongs to the superfamily of intermediate filament (IF) proteins. Keratins are heteropolymeric structural proteins which form the intermediate filament. These filaments, along with actin microfilaments and microtubules, compose the cytoskeleton of epithelial cells. The type I keratin genes are clustered in a region of chromosome 17q12-q21.

KRT25 Antibody (C-term) - References

Rose, J. Phd, et al. Mol. Med. (2010) In press :
 Schweizer, J., et al. J. Cell Biol. 174(2):169-174(2006)
 Rogers, M.A., et al. Differentiation 72 (9-10), 527-540 (2004) :
 Hesse, M., et al. Eur. J. Cell Biol. 83(1):19-26(2004)