

USP50 Antibody (Center)
Affinity Purified Rabbit Polyclonal Antibody (Pab)
Catalog # AP11253c**Specification**

USP50 Antibody (Center) - Product Information

Application	IHC-P, WB,E
Primary Accession	Q70EL3
Other Accession	NP_987090.1
Reactivity	Human
Host	Rabbit
Clonality	Polyclonal
Isotype	Rabbit IgG
Calculated MW	38955
Antigen Region	141-169

USP50 Antibody (Center) - Additional Information**Gene ID** 373509**Other Names**

Inactive ubiquitin carboxyl-terminal hydrolase 50, Inactive ubiquitin-specific peptidase 50, USP50

Target/Specificity

This USP50 antibody is generated from rabbits immunized with a KLH conjugated synthetic peptide between 141-169 amino acids from the Central region of human USP50.

Dilution

IHC-P~~1:50~100

WB~~1:1000

E~~Use at an assay dependent concentration.

Format

Purified polyclonal antibody supplied in PBS with 0.09% (W/V) sodium azide. This antibody is purified through a protein A column, followed by peptide affinity purification.

Storage

Maintain refrigerated at 2-8°C for up to 2 weeks. For long term storage store at -20°C in small aliquots to prevent freeze-thaw cycles.

Precautions

USP50 Antibody (Center) is for research use only and not for use in diagnostic or therapeutic procedures.

USP50 Antibody (Center) - Protein Information**Name** USP50 ([HGNC:20079](#))

Function Deubiquitinating enzyme that removes conjugated ubiquitin from specific proteins to regulate different cellular processes. Regulates the inflammasome signaling pathway by deubiquitinating 'Lys- 63'-linked polyubiquitination of the PYCARD/ASC adapter protein (PubMed:[28094437](#)). Regulates the ubiquitination and stability of the ACE2 protein (PubMed:[36876523](#)). Acts as a negative regulator of the G2/M checkpoint pathway, by preventing serine/threonine kinase WEE1 degradation, thereby repressing entry into mitosis following activation of the G2/M DNA damage checkpoint (PubMed:[20930503](#)).

Cellular Location

Cytoplasm. Cytoplasm, cytoskeleton, microtubule organizing center, centrosome. Nucleus
Note=Accumulates in the nucleus following DNA injury

Tissue Location

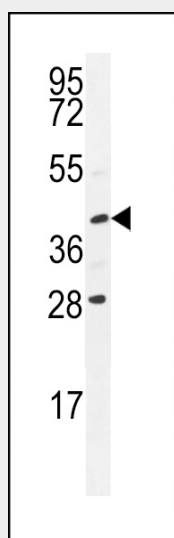
Weakly expressed in a few tissues.

USP50 Antibody (Center) - Protocols

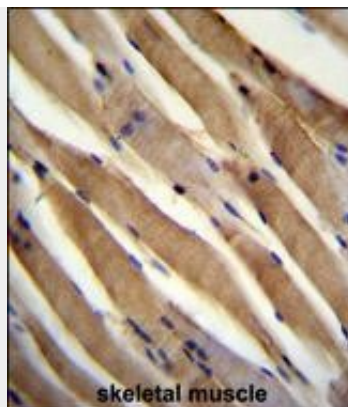
Provided below are standard protocols that you may find useful for product applications.

- [Western Blot](#)
- [Blocking Peptides](#)
- [Dot Blot](#)
- [Immunohistochemistry](#)
- [Immunofluorescence](#)
- [Immunoprecipitation](#)
- [Flow Cytometry](#)
- [Cell Culture](#)

USP50 Antibody (Center) - Images



USP50 Antibody (Center) (Cat. #AP11253c) western blot analysis in Y79 cell line lysates (35ug/lane). This demonstrates the USP50 antibody detected the USP50 protein (arrow).



USP50 Antibody (Center) (Cat. #AP11253c) immunohistochemistry analysis in formalin fixed and paraffin embedded human skeletal muscle followed by peroxidase conjugation of the secondary antibody and DAB staining. This data demonstrates the use of USP50 Antibody (Center) for immunohistochemistry. Clinical relevance has not been evaluated.

USP50 Antibody (Center) - Background

Has no peptidase activity.