

SPATA5L1 Antibody (C-term)
Affinity Purified Rabbit Polyclonal Antibody (Pab)
Catalog # AP11262b**Specification**

SPATA5L1 Antibody (C-term) - Product Information

Application	WB,E
Primary Accession	O9BVQ7
Other Accession	NP_076968.1
Reactivity	Human
Host	Rabbit
Clonality	Polyclonal
Isotype	Rabbit IgG
Antigen Region	585-613

SPATA5L1 Antibody (C-term) - Additional Information**Gene ID** 79029**Other Names**

Spermatogenesis-associated protein 5-like protein 1, SPATA5L1

Target/Specificity

This SPATA5L1 antibody is generated from rabbits immunized with a KLH conjugated synthetic peptide between 585-613 amino acids from the C-terminal region of human SPATA5L1.

Dilution

WB~~1:1000

E~~Use at an assay dependent concentration.

Format

Purified polyclonal antibody supplied in PBS with 0.09% (W/V) sodium azide. This antibody is purified through a protein A column, followed by peptide affinity purification.

Storage

Maintain refrigerated at 2-8°C for up to 2 weeks. For long term storage store at -20°C in small aliquots to prevent freeze-thaw cycles.

Precautions

SPATA5L1 Antibody (C-term) is for research use only and not for use in diagnostic or therapeutic procedures.

SPATA5L1 Antibody (C-term) - Protein Information**Name** AFG2B ([HGNC:28762](#))

Function ATP-dependent chaperone part of the 55LCC heterohexameric ATPase complex which is chromatin-associated and promotes replisome proteostasis to maintain replication fork

progression and genome stability. Required for replication fork progression, sister chromatid cohesion, and chromosome stability. The ATPase activity is specifically enhanced by replication fork DNA and is coupled to cysteine protease- dependent cleavage of replisome substrates in response to replication fork damage. Uses ATPase activity to process replisome substrates in S-phase, facilitating their proteolytic turnover from chromatin to ensure DNA replication and mitotic fidelity (PubMed:[38554706](#)). Plays an essential role in the cytoplasmic maturation steps of pre-60S ribosomal particles by promoting the release of shuttling protein RSL24D1/RLP24 from the pre-ribosomal particles (PubMed:[35354024](#)).

Cellular Location

Cytoplasm. Cytoplasm, cytoskeleton, spindle. Nucleus {ECO:0000250|UniProtKB:D4A2B7}

Tissue Location

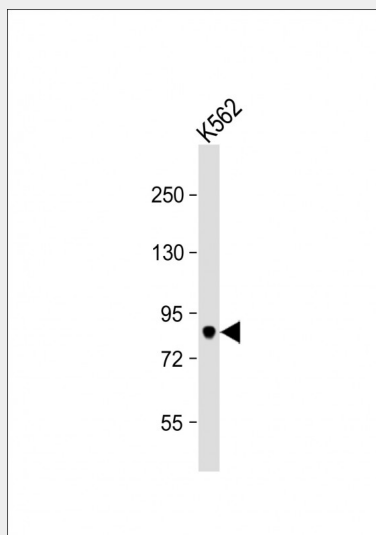
Expressed in both neurons and glia during embryonic and adult stages of brain development.

SPATA5L1 Antibody (C-term) - Protocols

Provided below are standard protocols that you may find useful for product applications.

- [Western Blot](#)
- [Blocking Peptides](#)
- [Dot Blot](#)
- [Immunohistochemistry](#)
- [Immunofluorescence](#)
- [Immunoprecipitation](#)
- [Flow Cytometry](#)
- [Cell Culture](#)

SPATA5L1 Antibody (C-term) - Images



Anti-SPATA5L1 Antibody (C-term) at 1:1000 dilution + K562 whole cell lysate Lysates/proteins at 20 µg per lane. Secondary Goat Anti-Rabbit IgG, (H+L), Peroxidase conjugated at 1/10000 dilution. Predicted band size : 81 kDa Blocking/Dilution buffer: 5% NFDM/TBST.