

EXOC3L Antibody (C-term)
Affinity Purified Rabbit Polyclonal Antibody (Pab)
Catalog # AP11266B**Specification**

EXOC3L Antibody (C-term) - Product Information

Application	IF, WB, IHC-P,E
Primary Accession	Q86VI1
Other Accession	Q8BI71 , Q0VCR8 , NP_848611.2
Reactivity	Human, Mouse
Predicted	Bovine
Host	Rabbit
Clonality	Polyclonal
Isotype	Rabbit IgG
Calculated MW	81678
Antigen Region	652-680

EXOC3L Antibody (C-term) - Additional Information**Gene ID** 283849**Other Names**

Exocyst complex component 3-like protein, Protein Jiangli, EXOC3L1, EXOC3L

Target/Specificity

This EXOC3L antibody is generated from rabbits immunized with a KLH conjugated synthetic peptide between 652-680 amino acids from the C-terminal region of human EXOC3L.

Dilution

IF~~1:10~50

WB~~1:1000

IHC-P~~1:10~50

Format

Purified polyclonal antibody supplied in PBS with 0.09% (W/V) sodium azide. This antibody is purified through a protein A column, followed by peptide affinity purification.

Storage

Maintain refrigerated at 2-8°C for up to 2 weeks. For long term storage store at -20°C in small aliquots to prevent freeze-thaw cycles.

Precautions

EXOC3L Antibody (C-term) is for research use only and not for use in diagnostic or therapeutic procedures.

EXOC3L Antibody (C-term) - Protein Information**Name** EXOC3L1

Synonyms EXOC3L

Function As part of the exocyst, may play a role in regulated exocytosis of insulin granules.

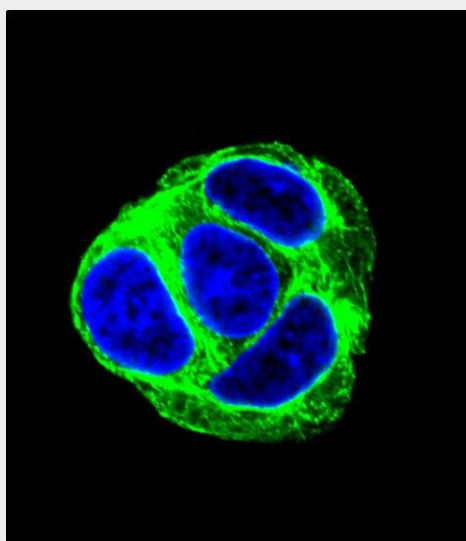
Cellular Location

Cytoplasmic vesicle, secretory vesicle. Note=Colocalizes with insulin granules.

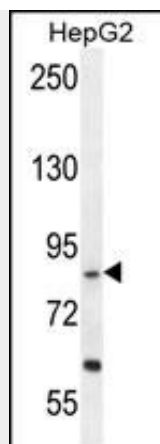
EXOC3L Antibody (C-term) - Protocols

Provided below are standard protocols that you may find useful for product applications.

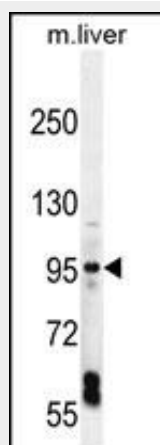
- [Western Blot](#)
- [Blocking Peptides](#)
- [Dot Blot](#)
- [Immunohistochemistry](#)
- [Immunofluorescence](#)
- [Immunoprecipitation](#)
- [Flow Cytometry](#)
- [Cell Culture](#)

EXOC3L Antibody (C-term) - Images

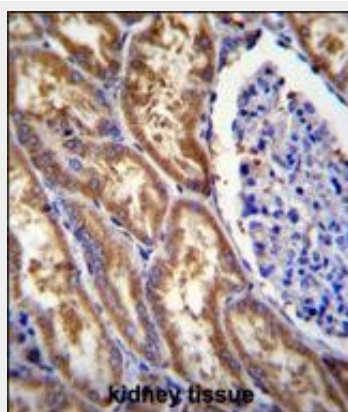
Confocal immunofluorescent analysis of EXOC3L Antibody (C-term)(Cat#AP11266b) with HepG2 cell followed by Alexa Fluor 488-conjugated goat anti-rabbit IgG (green). DAPI was used to stain the cell nuclear (blue).



EXOC3L Antibody (C-term) (Cat. #AP11266b) western blot analysis in HepG2 cell line lysates (35ug/lane). This demonstrates the EXOC3L antibody detected the EXOC3L protein (arrow).



EXOC3L Antibody (C-term) (Cat. #AP11266b) western blot analysis in mouse liver tissue lysates (35ug/lane). This demonstrates the EXOC3L antibody detected the EXOC3L protein (arrow).



EXOC3L Antibody (C-term) (Cat. #AP11266b) immunohistochemistry analysis in formalin fixed and paraffin embedded human kidney tissue followed by peroxidase conjugation of the secondary antibody and DAB staining. This data demonstrates the use of EXOC3L Antibody (C-term) for immunohistochemistry. Clinical relevance has not been evaluated.

EXOC3L Antibody (C-term) - References

Saito, T., et al. Biomed. Res. 29(2):85-91(2008)