

OR2F2 Antibody (C-term)
Affinity Purified Rabbit Polyclonal Antibody (Pab)
Catalog # AP11276b**Specification**

OR2F2 Antibody (C-term) - Product Information

Application	FC, WB,E
Primary Accession	O95006
Other Accession	NP_001004685.1
Reactivity	Human
Host	Rabbit
Clonality	Polyclonal
Isotype	Rabbit IgG
Calculated MW	35294
Antigen Region	287-314

OR2F2 Antibody (C-term) - Additional Information**Gene ID** 135948**Other Names**

Olfactory receptor 2F2, Olfactory receptor 7-1, OR7-1, Olfactory receptor OR7-6, OR2F2

Target/Specificity

This OR2F2 antibody is generated from rabbits immunized with a KLH conjugated synthetic peptide between 287-314 amino acids from the C-terminal region of human OR2F2.

Dilution

FC~~1:10~50

WB~~1:1000

E~~Use at an assay dependent concentration.

Format

Purified polyclonal antibody supplied in PBS with 0.09% (W/V) sodium azide. This antibody is purified through a protein A column, followed by peptide affinity purification.

Storage

Maintain refrigerated at 2-8°C for up to 2 weeks. For long term storage store at -20°C in small aliquots to prevent freeze-thaw cycles.

Precautions

OR2F2 Antibody (C-term) is for research use only and not for use in diagnostic or therapeutic procedures.

OR2F2 Antibody (C-term) - Protein Information**Name** OR2F2

Function Odorant receptor.

Cellular Location

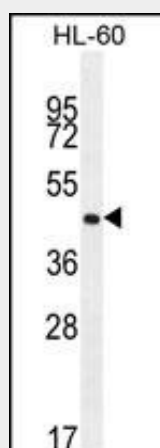
Cell membrane; Multi-pass membrane protein.

OR2F2 Antibody (C-term) - Protocols

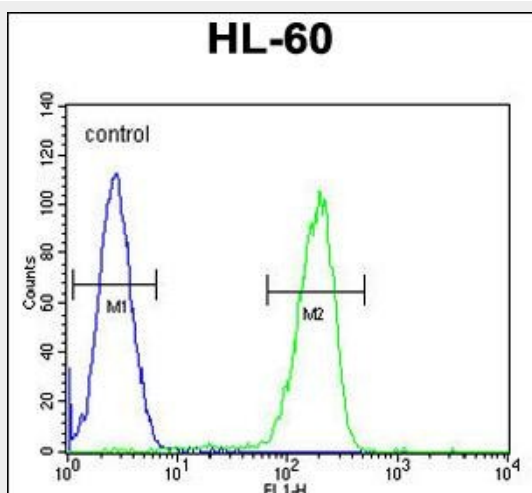
Provided below are standard protocols that you may find useful for product applications.

- [Western Blot](#)
- [Blocking Peptides](#)
- [Dot Blot](#)
- [Immunohistochemistry](#)
- [Immunofluorescence](#)
- [Immunoprecipitation](#)
- [Flow Cytometry](#)
- [Cell Culture](#)

OR2F2 Antibody (C-term) - Images



OR2F2 Antibody (C-term) (Cat. #AP11276b) western blot analysis in HL-60 cell line lysates (35ug/lane). This demonstrates the OR2F2 antibody detected the OR2F2 protein (arrow).



OR2F2 Antibody (C-term) (Cat. #AP11276b) flow cytometric analysis of HL-60 cells (right

histogram) compared to a negative control cell (left histogram). FITC-conjugated goat-anti-rabbit secondary antibodies were used for the analysis.

OR2F2 Antibody (C-term) - Background

Olfactory receptors interact with odorant molecules in the nose, to initiate a neuronal response that triggers the perception of a smell. The olfactory receptor proteins are members of a large family of G-protein-coupled receptors (GPCR) arising from single coding-exon genes. Olfactory receptors share a 7-transmembrane domain structure with many neurotransmitter and hormone receptors and are responsible for the recognition and G protein-mediated transduction of odorant signals. The olfactory receptor gene family is the largest in the genome. The nomenclature assigned to the olfactory receptor genes and proteins for this organism is independent of other organisms.

OR2F2 Antibody (C-term) - References

Malnic, B., et al. Proc. Natl. Acad. Sci. U.S.A. 101(8):2584-2589(2004)