

CLEC4F Antibody (C-term)
Affinity Purified Rabbit Polyclonal Antibody (Pab)
Catalog # AP11289b

Specification

CLEC4F Antibody (C-term) - Product Information

Application	IHC-P-Leica, WB,E
Primary Accession	Q8N1N0
Other Accession	NP_775806.2
Reactivity	Human
Host	Rabbit
Clonality	Polyclonal
Isotype	Rabbit IgG
Antigen Region	311-339

CLEC4F Antibody (C-term) - Additional Information

Gene ID 165530

Other Names

C-type lectin domain family 4 member F, C-type lectin superfamily member 13, C-type lectin 13, CLEC4F, CLECSF13

Target/Specificity

This CLEC4F antibody is generated from rabbits immunized with a KLH conjugated synthetic peptide between 311-339 amino acids from the C-terminal region of human CLEC4F.

Dilution

IHC-P-Leica~~1:250

WB~~1:2000

E~~Use at an assay dependent concentration.

Format

Purified polyclonal antibody supplied in PBS with 0.09% (W/V) sodium azide. This antibody is purified through a protein A column, followed by peptide affinity purification.

Storage

Maintain refrigerated at 2-8°C for up to 2 weeks. For long term storage store at -20°C in small aliquots to prevent freeze-thaw cycles.

Precautions

CLEC4F Antibody (C-term) is for research use only and not for use in diagnostic or therapeutic procedures.

CLEC4F Antibody (C-term) - Protein Information

Name CLEC4F

Synonyms CLECSF13

Function Receptor with an affinity for galactose and fucose. Could be involved in endocytosis (By similarity).

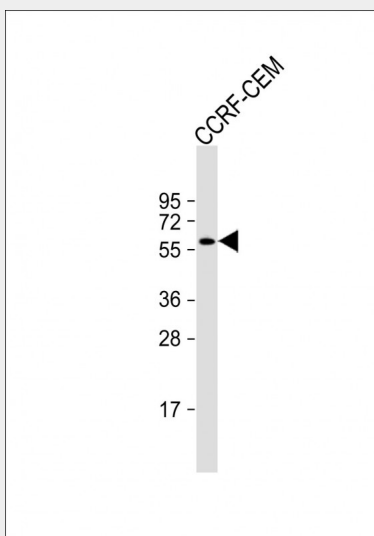
Cellular Location

Membrane; Single-pass type II membrane protein

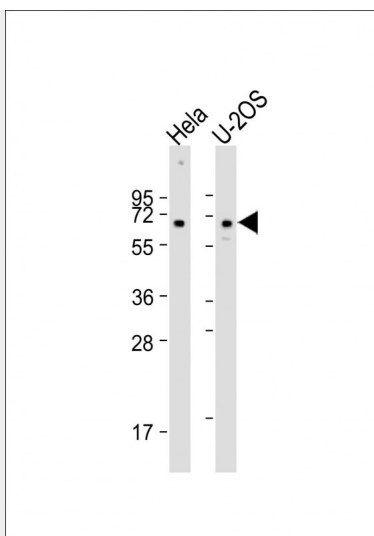
CLEC4F Antibody (C-term) - Protocols

Provided below are standard protocols that you may find useful for product applications.

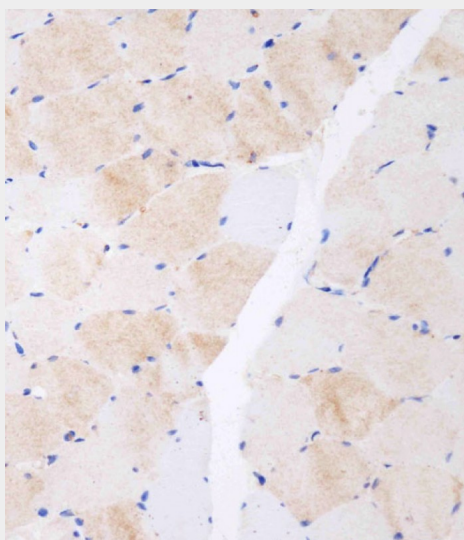
- [Western Blot](#)
- [Blocking Peptides](#)
- [Dot Blot](#)
- [Immunohistochemistry](#)
- [Immunofluorescence](#)
- [Immunoprecipitation](#)
- [Flow Cytometry](#)
- [Cell Culture](#)

CLEC4F Antibody (C-term) - Images

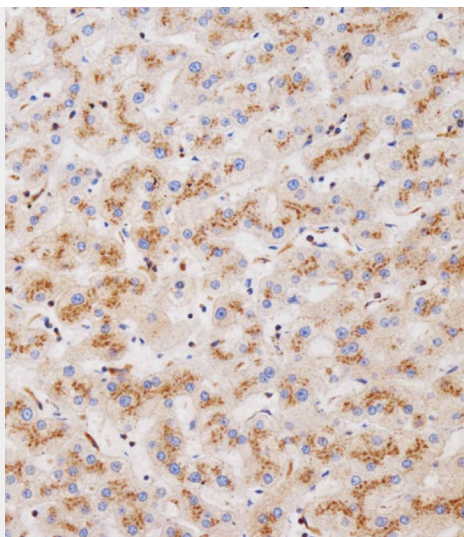
Anti-CLEC4F Antibody (C-term) at 1:500 dilution + CCRF-CEM whole cell lysate Lysates/proteins at 20 µg per lane. Secondary Goat Anti-Rabbit IgG, (H+L), Peroxidase conjugated at 1/10000 dilution. Predicted band size : 66 kDa Blocking/Dilution buffer: 5% NFDM/TBST.



All lanes : Anti-CLEC4F Antibody (C-term) at 1:2000 dilution Lane 1: HeLa whole cell lysate Lane 2: U-2OS whole cell lysate Lysates/proteins at 20 µg per lane. Secondary Goat Anti-Rabbit IgG, (H+L), Peroxidase conjugated at 1/10000 dilution. Predicted band size : 66 kDa Blocking/Dilution buffer: 5% NFDM/TBST.



Immunohistochemical analysis of AP11289b on paraffin-embedded human skeletal muscle tissue was performed on the Leica® BOND RXm. Tissue was fixed with formaldehyde at room temperature. Heat induced epitope retrieval was performed by EDTA buffer (pH9. 0). Samples were incubated with primary antibody(1:250) for 15min at room temperature. Leica Bond Polymer Refine Detection was used as the secondary antibody.



Immunohistochemical analysis of AP11289b on paraffin-embedded human liver tissue was performed on the Leica® BOND RXm. Tissue was fixed with formaldehyde at room temperature. Heat induced epitope retrieval was performed by EDTA buffer (pH9. 0). Samples were incubated with primary antibody(1:250) for 15min at room temperature. Leica Bond Polymer Refine Detection was used as the secondary antibody.

CLEC4F Antibody (C-term) - Background

Receptor with an affinity for galactose and fucose. Could be involved in endocytosis (By similarity).

CLEC4F Antibody (C-term) - References

Lim, J., et al. Cell 125(4):801-814(2006)
Hoyle, G.W., et al. J. Biol. Chem. 266(3):1850-1857(1991)