

**TSPYL6 Antibody (Center)**  
**Affinity Purified Rabbit Polyclonal Antibody (Pab)**  
**Catalog # AP11292c**

**Specification**

---

**TSPYL6 Antibody (Center) - Product Information**

Application	WB, IF, FC, IHC-P,E
Primary Accession	<a href="#">Q8N831</a>
Other Accession	<a href="#">NP_001003937.2</a>
Reactivity	Human
Host	Rabbit
Clonality	Polyclonal
Isotype	Rabbit IgG
Calculated MW	45874
Antigen Region	206-235

**TSPYL6 Antibody (Center) - Additional Information**

**Gene ID** 388951

**Other Names**

Testis-specific Y-encoded-like protein 6, TSPY-like protein 6, TSPYL6

**Target/Specificity**

This TSPYL6 antibody is generated from rabbits immunized with a KLH conjugated synthetic peptide between 206-235 amino acids from the Central region of human TSPYL6.

**Dilution**

WB~~1:1000  
IF~~1:10~50  
FC~~1:10~50  
IHC-P~~1:50~100  
E~~Use at an assay dependent concentration.

**Format**

Purified polyclonal antibody supplied in PBS with 0.09% (W/V) sodium azide. This antibody is purified through a protein A column, followed by peptide affinity purification.

**Storage**

Maintain refrigerated at 2-8°C for up to 2 weeks. For long term storage store at -20°C in small aliquots to prevent freeze-thaw cycles.

**Precautions**

TSPYL6 Antibody (Center) is for research use only and not for use in diagnostic or therapeutic procedures.

**TSPYL6 Antibody (Center) - Protein Information**

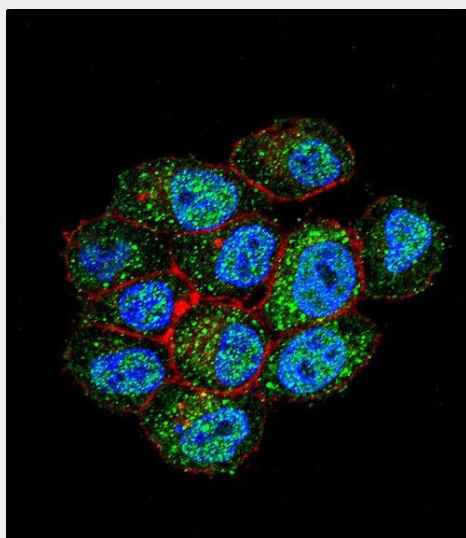
**Name** TSPYL6

### **TSPYL6 Antibody (Center) - Protocols**

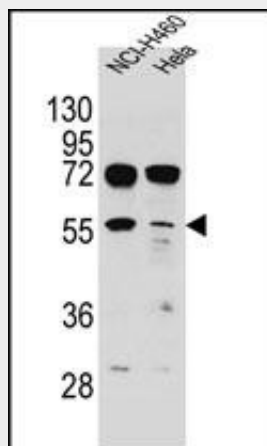
Provided below are standard protocols that you may find useful for product applications.

- [Western Blot](#)
- [Blocking Peptides](#)
- [Dot Blot](#)
- [Immunohistochemistry](#)
- [Immunofluorescence](#)
- [Immunoprecipitation](#)
- [Flow Cytometry](#)
- [Cell Culture](#)

### **TSPYL6 Antibody (Center) - Images**

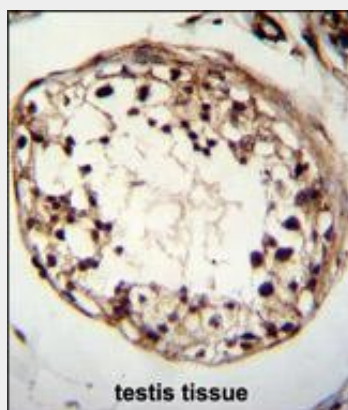


Confocal immunofluorescent analysis of TSPYL6 Antibody (Center)(Cat#AP11292c) with HeLa cell followed by Alexa Fluor 488-conjugated goat anti-rabbit IgG (green). Actin filaments have been labeled with Alexa Fluor 555 phalloidin (red). DAPI was used to stain the cell nuclear (blue).

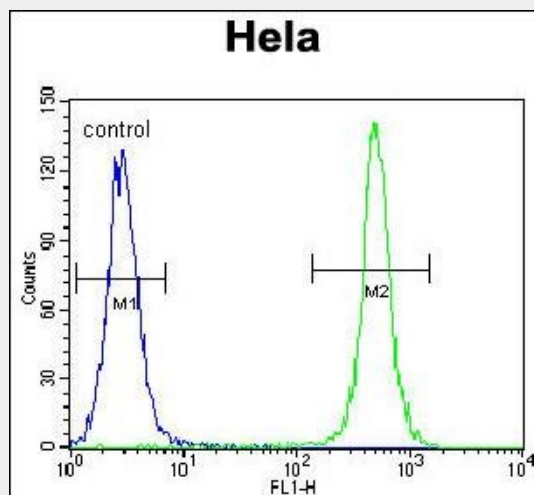


TSPYL6 Antibody (Center) (Cat. #AP11292c) western blot analysis in NCI-H460, HeLa cell line

lysates (35ug/lane). This demonstrates the TSPYL6 antibody detected the TSPYL6 protein (arrow).



TSPYL6 Antibody (Center) (Cat. #AP11292c) immunohistochemistry analysis in formalin fixed and paraffin embedded human testis tissue followed by peroxidase conjugation of the secondary antibody and DAB staining. This data demonstrates the use of TSPYL6 Antibody (Center) for immunohistochemistry. Clinical relevance has not been evaluated.



TSPYL6 Antibody (Center) (Cat. #AP11292c) flow cytometric analysis of Hela cells (right histogram) compared to a negative control cell (left histogram). FITC-conjugated goat-anti-rabbit secondary antibodies were used for the analysis.

#### **TSPYL6 Antibody (Center) - References**

- Kimura, K., et al. Genome Res. 16(1):55-65(2006)  
Strausberg, R.L., et al. Proc. Natl. Acad. Sci. U.S.A. 99(26):16899-16903(2002)