

**CCDC102A Antibody (C-term)**  
**Affinity Purified Rabbit Polyclonal Antibody (Pab)**  
**Catalog # AP11294b****Specification**

---

**CCDC102A Antibody (C-term) - Product Information**

Application	IHC-P, WB,E
Primary Accession	<a href="#">O96A19</a>
Other Accession	<a href="#">Q3TMW1</a> , <a href="#">A0JNH6</a> , <a href="#">NP_149989.1</a>
Reactivity	Mouse
Predicted	Bovine
Host	Rabbit
Clonality	Polyclonal
Isotype	Rabbit IgG
Calculated MW	62596
Antigen Region	401-430

**CCDC102A Antibody (C-term) - Additional Information****Gene ID** 92922**Other Names**

Coiled-coil domain-containing protein 102A, CCDC102A

**Target/Specificity**

This CCDC102A antibody is generated from rabbits immunized with a KLH conjugated synthetic peptide between 401-430 amino acids from the C-terminal region of human CCDC102A.

**Dilution**

IHC-P~~1:50~100

WB~~1:1000

E~~Use at an assay dependent concentration.

**Format**

Purified polyclonal antibody supplied in PBS with 0.09% (W/V) sodium azide. This antibody is purified through a protein A column, followed by peptide affinity purification.

**Storage**

Maintain refrigerated at 2-8°C for up to 2 weeks. For long term storage store at -20°C in small aliquots to prevent freeze-thaw cycles.

**Precautions**

CCDC102A Antibody (C-term) is for research use only and not for use in diagnostic or therapeutic procedures.

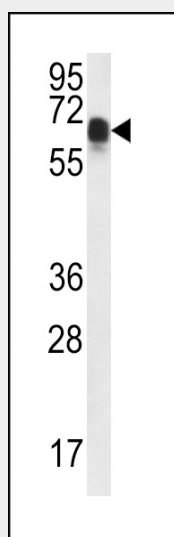
**CCDC102A Antibody (C-term) - Protein Information****Name** CCDC102A

## CCDC102A Antibody (C-term) - Protocols

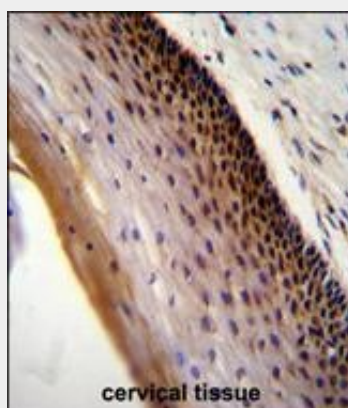
Provided below are standard protocols that you may find useful for product applications.

- [Western Blot](#)
- [Blocking Peptides](#)
- [Dot Blot](#)
- [Immunohistochemistry](#)
- [Immunofluorescence](#)
- [Immunoprecipitation](#)
- [Flow Cytometry](#)
- [Cell Culture](#)

## CCDC102A Antibody (C-term) - Images



CCDC102A Antibody (C-term) (Cat. #AP11294b) western blot analysis in mouse bladder tissue lysates (35ug/lane). This demonstrates the CCDC102A antibody detected the CCDC102A protein (arrow).



CCDC102A Antibody (C-term) (Cat. #AP11294b) immunohistochemistry analysis in formalin fixed and paraffin embedded human cervical tissue followed by peroxidase conjugation of the secondary antibody and DAB staining. This data demonstrates the use of CCDC102A Antibody (C-term) for immunohistochemistry. Clinical relevance has not been evaluated.