

SPDYE1 Antibody (C-term)
Affinity Purified Rabbit Polyclonal Antibody (Pab)
Catalog # AP11296b**Specification**

SPDYE1 Antibody (C-term) - Product Information

Application	FC, WB,E
Primary Accession	Q8NFV5
Other Accession	NP_778234.2
Reactivity	Human
Host	Rabbit
Clonality	Polyclonal
Isotype	Rabbit IgG
Calculated MW	40668
Antigen Region	242-271

SPDYE1 Antibody (C-term) - Additional Information**Gene ID** 285955**Other Names**

Speedy protein E1, Williams-Beuren syndrome chromosomal region 19 protein, SPDYE1, WBSCR19

Target/Specificity

This SPDYE1 antibody is generated from rabbits immunized with a KLH conjugated synthetic peptide between 242-271 amino acids from the C-terminal region of human SPDYE1.

Dilution

FC~~1:10~50

WB~~1:1000

E~~Use at an assay dependent concentration.

Format

Purified polyclonal antibody supplied in PBS with 0.09% (W/V) sodium azide. This antibody is purified through a protein A column, followed by peptide affinity purification.

Storage

Maintain refrigerated at 2-8°C for up to 2 weeks. For long term storage store at -20°C in small aliquots to prevent freeze-thaw cycles.

Precautions

SPDYE1 Antibody (C-term) is for research use only and not for use in diagnostic or therapeutic procedures.

SPDYE1 Antibody (C-term) - Protein Information**Name** SPDYE1 ([HGNC:16408](#))

Synonyms WBSCR19

Tissue Location

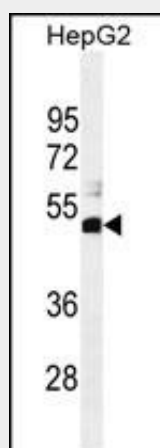
Predominantly expressed in testis and heart.

SPDYE1 Antibody (C-term) - Protocols

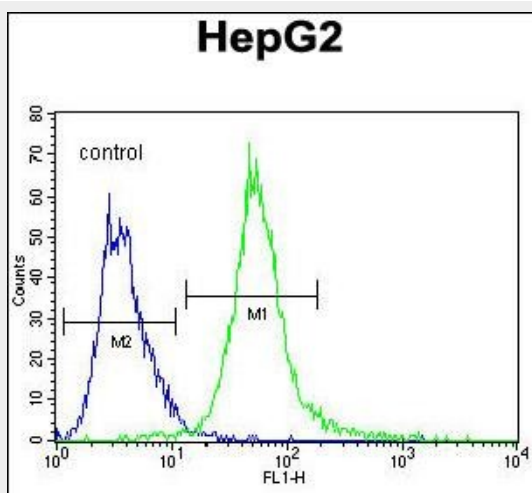
Provided below are standard protocols that you may find useful for product applications.

- [Western Blot](#)
- [Blocking Peptides](#)
- [Dot Blot](#)
- [Immunohistochemistry](#)
- [Immunofluorescence](#)
- [Immunoprecipitation](#)
- [Flow Cytometry](#)
- [Cell Culture](#)

SPDYE1 Antibody (C-term) - Images



SPDYE1 Antibody (C-term) (Cat. #AP11296b) western blot analysis in HepG2 cell line lysates (35ug/lane). This demonstrates the SPDYE1 antibody detected the SPDYE1 protein (arrow).



SPDYE1 Antibody (C-term) (Cat. #AP11296b) flow cytometric analysis of HepG2 cells (right

histogram) compared to a negative control cell (left histogram).FITC-conjugated goat-anti-rabbit secondary antibodies were used for the analysis.

SPDYE1 Antibody (C-term) - Background

This gene is located at chromosome 7p13 which is close to the Williams Beuren syndrome chromosome region 7q11.23. [provided by RefSeq].

SPDYE1 Antibody (C-term) - References

Dinarina, A., et al. Biochem. J. 386 (PT 2), 349-355 (2005) :
Merla, G., et al. Hum. Genet. 110(5):429-438(2002)