

**POLR2J Antibody (C-Term)**  
**Affinity Purified Rabbit Polyclonal Antibody (Pab)**  
**Catalog # AP11300b**

**Specification**

---

**POLR2J Antibody (C-Term) - Product Information**

Application	IHC-P, WB,E
Primary Accession	<a href="#">P52435</a>
Other Accession	<a href="#">Q32P79</a> , <a href="#">NP_006225.1</a>
Reactivity	Human, Mouse
Predicted	Bovine
Host	Rabbit
Clonality	Polyclonal
Isotype	Rabbit IgG
Calculated MW	13293
Antigen Region	86-115

**POLR2J Antibody (C-Term) - Additional Information**

**Gene ID** 5439

**Other Names**

DNA-directed RNA polymerase II subunit RPB11-a, RNA polymerase II subunit B11-a, RPB11a,  
DNA-directed RNA polymerase II subunit J-1, RNA polymerase II 133 kDa subunit, POLR2J, POLR2J1

**Target/Specificity**

This POLR2J antibody is generated from rabbits immunized with a KLH conjugated synthetic peptide between 86-115 amino acids from the C-terminal region of human POLR2J.

**Dilution**

IHC-P~~1:50~100

WB~~1:1000

E~~Use at an assay dependent concentration.

**Format**

Purified polyclonal antibody supplied in PBS with 0.09% (W/V) sodium azide. This antibody is purified through a protein A column, followed by peptide affinity purification.

**Storage**

Maintain refrigerated at 2-8°C for up to 2 weeks. For long term storage store at -20°C in small aliquots to prevent freeze-thaw cycles.

**Precautions**

POLR2J Antibody (C-Term) is for research use only and not for use in diagnostic or therapeutic procedures.

**POLR2J Antibody (C-Term) - Protein Information**

**Name** POLR2J

**Synonyms** POLR2J1

**Function** Core component of RNA polymerase II (Pol II), a DNA-dependent RNA polymerase which synthesizes mRNA precursors and many functional non-coding RNAs using the four ribonucleoside triphosphates as substrates.

**Cellular Location**

Nucleus.

**Tissue Location**

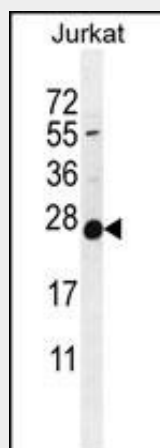
Ubiquitously expressed. High expression was found in heart and skeletal muscle.

### **POLR2J Antibody (C-Term) - Protocols**

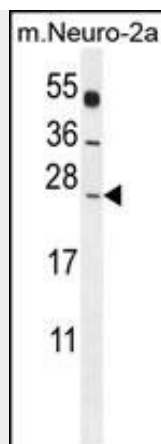
Provided below are standard protocols that you may find useful for product applications.

- [Western Blot](#)
- [Blocking Peptides](#)
- [Dot Blot](#)
- [Immunohistochemistry](#)
- [Immunofluorescence](#)
- [Immunoprecipitation](#)
- [Flow Cytometry](#)
- [Cell Culture](#)

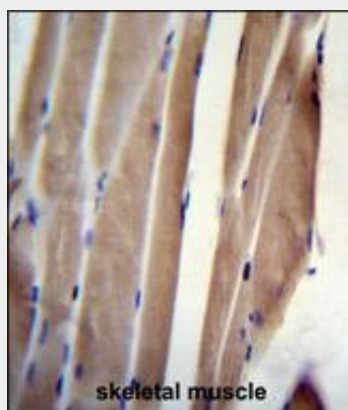
### **POLR2J Antibody (C-Term) - Images**



POLR2J Antibody (C-Term) (Cat. #AP11300b) western blot analysis in Jurkat cell line lysates (35ug/lane). This demonstrates the POLR2J antibody detected the POLR2J protein (arrow).



POLR2J Antibody (C-Term) (Cat. #AP11300b) western blot analysis in mouse Neuro-2a cell line lysates (35ug/lane). This demonstrates the POLR2J antibody detected the POLR2J protein (arrow).



POLR2J Antibody (C-Term) (Cat. #AP11300b) immunohistochemistry analysis in formalin fixed and paraffin embedded human skeletal muscle followed by peroxidase conjugation of the secondary antibody and DAB staining. This data demonstrates the use of POLR2J Antibody (C-Term) for immunohistochemistry. Clinical relevance has not been evaluated.

### **POLR2J Antibody (C-Term) - Background**

This gene encodes a subunit of RNA polymerase II, the polymerase responsible for synthesizing messenger RNA in eukaryotes. The product of this gene exists as a heterodimer with another polymerase subunit; together they form a core subassembly unit of the polymerase. Two similar genes are located nearby on chromosome 7q22.1 and a pseudogene is found on chromosome 7p13.

### **POLR2J Antibody (C-Term) - References**

- Michiels, S., et al. Carcinogenesis 30(5):763-768(2009)
- Oh, J.H., et al. Mamm. Genome 16(12):942-954(2005)
- Shpakovskii, D.G., et al. Bioorg. Khim. 30(6):621-625(2004)
- Zhou, M., et al. Proc. Natl. Acad. Sci. U.S.A. 100(22):12666-12671(2003)
- Kaehlcke, K., et al. Mol. Cell 12(1):167-176(2003)