

MTHFD2L Antibody (C-term)
Affinity Purified Rabbit Polyclonal Antibody (Pab)
Catalog # AP11306b

Specification

MTHFD2L Antibody (C-term) - Product Information

Application	WB,E
Primary Accession	O9H903
Other Accession	NP_001138450.1
Reactivity	Human
Host	Rabbit
Clonality	Polyclonal
Isotype	Rabbit IgG
Calculated MW	37315
Antigen Region	274-302

MTHFD2L Antibody (C-term) - Additional Information

Gene ID 441024

Other Names

Probable bifunctional methylenetetrahydrofolate dehydrogenase/cyclohydrolase 2, NADP-dependent methylenetetrahydrofolate dehydrogenase 2-like protein, MTHFD2-like, NAD-dependent methylenetetrahydrofolate dehydrogenase, Methenyltetrahydrofolate cyclohydrolase, MTHFD2L

Target/Specificity

This MTHFD2L antibody is generated from rabbits immunized with a KLH conjugated synthetic peptide between 274-302 amino acids from the C-terminal region of human MTHFD2L.

Dilution

WB~~1:1000

Format

Purified polyclonal antibody supplied in PBS with 0.09% (W/V) sodium azide. This antibody is purified through a protein A column, followed by peptide affinity purification.

Storage

Maintain refrigerated at 2-8°C for up to 2 weeks. For long term storage store at -20°C in small aliquots to prevent freeze-thaw cycles.

Precautions

MTHFD2L Antibody (C-term) is for research use only and not for use in diagnostic or therapeutic procedures.

MTHFD2L Antibody (C-term) - Protein Information

Name MTHFD2L ([HGNC:31865](#))

Function Bifunctional mitochondrial folate-interconverting enzyme that has both NAD/NADP-dependent methylenetetrahydrofolate dehydrogenase and methenyltetrahydrofolate cyclohydrolase activities.

Cellular Location

Mitochondrion inner membrane {ECO:0000250|UniProtKB:D3ZUA0}; Peripheral membrane protein {ECO:0000250|UniProtKB:D3ZUA0}; Matrix side {ECO:0000250|UniProtKB:D3ZUA0}

Tissue Location

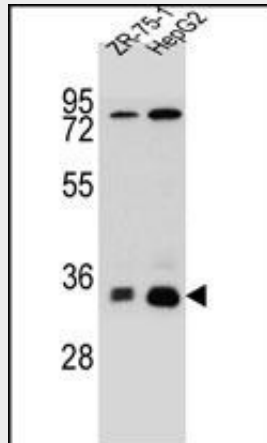
Isoform 1, isoform 4 and isoform 5 are expressed in brain and placenta.

MTHFD2L Antibody (C-term) - Protocols

Provided below are standard protocols that you may find useful for product applications.

- [Western Blot](#)
- [Blocking Peptides](#)
- [Dot Blot](#)
- [Immunohistochemistry](#)
- [Immunofluorescence](#)
- [Immunoprecipitation](#)
- [Flow Cytometry](#)
- [Cell Culture](#)

MTHFD2L Antibody (C-term) - Images



MTHFD2L Antibody (C-term) (Cat. #AP11306b) western blot analysis in HepG2,ZR-75-1 cell line lysates (35ug/lane).This demonstrates the MTHFD2L antibody detected the MTHFD2L protein (arrow).