

CRFR2D Antibody
Affinity Purified Rabbit Polyclonal Antibody (Pab)
Catalog # AP11312a**Specification**

CRFR2D Antibody - Product Information

Application	FC, IHC-P, WB,E
Primary Accession	Q13324
Other Accession	B3SXS6 , NP_001189412.1
Reactivity	Human
Host	Rabbit
Clonality	Polyclonal
Isotype	Rabbit IgG
Calculated MW	47688

CRFR2D Antibody - Additional Information**Gene ID** 1395**Other Names**

Corticotropin-releasing factor receptor 2, CRF-R-2, CRF-R2, CRFR-2, Corticotropin-releasing hormone receptor 2, CRH-R-2, CRH-R2, CRHR2, CRF2R, CRH2R

Target/Specificity

This CRFR2D antibody is generated from rabbits immunized with a KLH conjugated synthetic peptide selected from the human CRFR2D.

Dilution

FC~~1:10~50

IHC-P~~1:50~100

WB~~1:1000

E~~Use at an assay dependent concentration.

Format

Purified polyclonal antibody supplied in PBS with 0.09% (W/V) sodium azide. This antibody is purified through a protein A column, followed by peptide affinity purification.

Storage

Maintain refrigerated at 2-8°C for up to 2 weeks. For long term storage store at -20°C in small aliquots to prevent freeze-thaw cycles.

Precautions

CRFR2D Antibody is for research use only and not for use in diagnostic or therapeutic procedures.

CRFR2D Antibody - Protein Information**Name** CRHR2

Synonyms CRF2R, CRH2R

Function G-protein coupled receptor for CRH (corticotropin-releasing factor), UCN (urocortin), UCN2 and UCN3. Has high affinity for UCN. Ligand binding causes a conformation change that triggers signaling via guanine nucleotide-binding proteins (G proteins) and down-stream effectors, such as adenylate cyclase. Promotes the activation of adenylate cyclase, leading to increased intracellular cAMP levels.

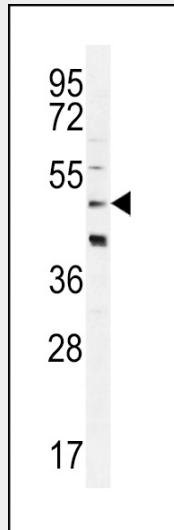
Cellular Location

Cell membrane; Multi-pass membrane protein

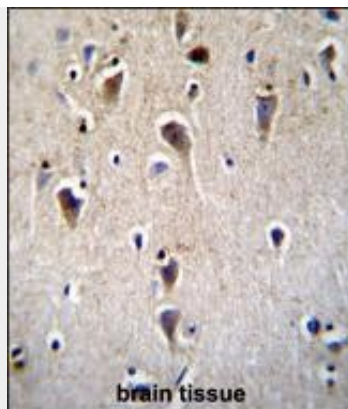
CRFR2D Antibody - Protocols

Provided below are standard protocols that you may find useful for product applications.

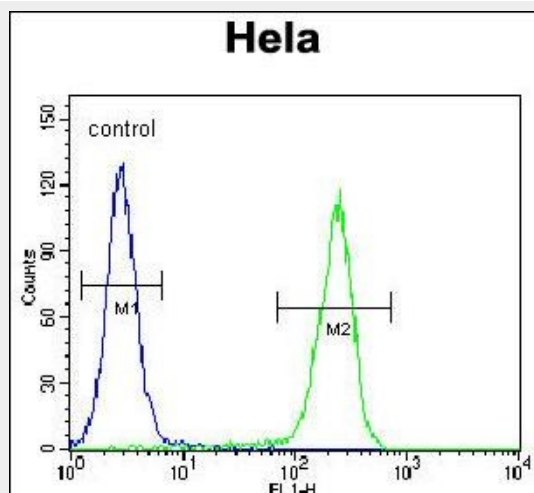
- [Western Blot](#)
- [Blocking Peptides](#)
- [Dot Blot](#)
- [Immunohistochemistry](#)
- [Immunofluorescence](#)
- [Immunoprecipitation](#)
- [Flow Cytometry](#)
- [Cell Culture](#)

CRFR2D Antibody - Images

CRFR2D Antibody (Cat. #AP11312a) western blot analysis in HeLa cell line lysates (35ug/lane). This demonstrates the CRFR2D antibody detected the CRFR2D protein (arrow).



CRFR2D Antibody (Cat. #AP11312a) immunohistochemistry analysis in formalin fixed and paraffin embedded human brain tissue followed by peroxidase conjugation of the secondary antibody and DAB staining. This data demonstrates the use of CRFR2D Antibody for immunohistochemistry. Clinical relevance has not been evaluated.



CRFR2D Antibody (Cat. #AP11312a) flow cytometric analysis of HeLa cells (right histogram) compared to a negative control cell (left histogram). FITC-conjugated goat-anti-rabbit secondary antibodies were used for the analysis.

CRFR2D Antibody - Background

Liaw et al. (1996) [PubMed 8536644] stated that there are 2 G protein-coupled corticotropin-releasing hormone (CRH; MIM 122560) receptors, CRHR1 (MIM 122561) and CRHR2, which they termed the CRF2 receptor. CRH is a 41-amino acid peptide synthesized in the hypothalamus that is the principal neuroregulator of the hypothalamic-pituitary-adrenocortical axis and plays an important role in coordinating the endocrine, autonomic, and behavioral responses to stress and immune challenge.

CRFR2D Antibody - References

Romero, R., et al. Am. J. Obstet. Gynecol. 203 (4), 361 (2010) :
Gutknecht, E., et al. Eur. J. Pharmacol. 642 (1-3), 1-9 (2010) :
Ruano, G., et al. Pharmacogenomics 11(7):959-971(2010)
Pinheiro, A.P., et al. Am. J. Med. Genet. B Neuropsychiatr. Genet. 153B (5), 1070-1080 (2010) :
Joubert, B.R., et al. Genome Med 2 (3), 17 (2010) :