

ARL8 Antibody (C-term)
Purified Rabbit Polyclonal Antibody (Pab)
Catalog # AP11320b**Specification**

ARL8 Antibody (C-term) - Product Information

Application	FC, WB, IHC-P,E
Primary Accession	O96KC2
Other Accession	O9D4P0 , NP_848930.1
Reactivity	Human
Predicted	Mouse
Host	Rabbit
Clonality	Polyclonal
Isotype	Rabbit IgG
Calculated MW	20375
Antigen Region	122-154

ARL8 Antibody (C-term) - Additional Information**Gene ID** 221079**Other Names**

ADP-ribosylation factor-like protein 5B, ADP-ribosylation factor-like protein 8, ARL5B, ARL8

Target/Specificity

This ARL8 antibody is generated from rabbits immunized with a KLH conjugated synthetic peptide between 122-154 amino acids from the C-terminal region of human ARL8.

Dilution

FC~~1:10~50

WB~~1:1000

IHC-P~~1:50~100

E~~Use at an assay dependent concentration.

Format

Purified polyclonal antibody supplied in PBS with 0.09% (W/V) sodium azide. This antibody is prepared by Saturated Ammonium Sulfate (SAS) precipitation followed by dialysis against PBS.

Storage

Maintain refrigerated at 2-8°C for up to 2 weeks. For long term storage store at -20°C in small aliquots to prevent freeze-thaw cycles.

Precautions

ARL8 Antibody (C-term) is for research use only and not for use in diagnostic or therapeutic procedures.

ARL8 Antibody (C-term) - Protein Information

Name ARL5B

Synonyms ARL8

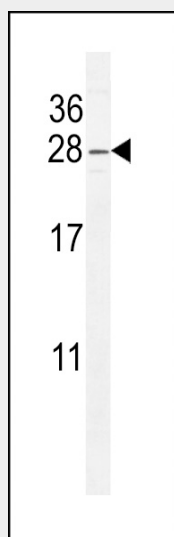
Function Binds and exchanges GTP and GDP.

ARL8 Antibody (C-term) - Protocols

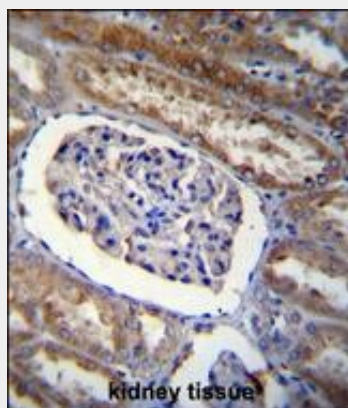
Provided below are standard protocols that you may find useful for product applications.

- [Western Blot](#)
- [Blocking Peptides](#)
- [Dot Blot](#)
- [Immunohistochemistry](#)
- [Immunofluorescence](#)
- [Immunoprecipitation](#)
- [Flow Cytometry](#)
- [Cell Culture](#)

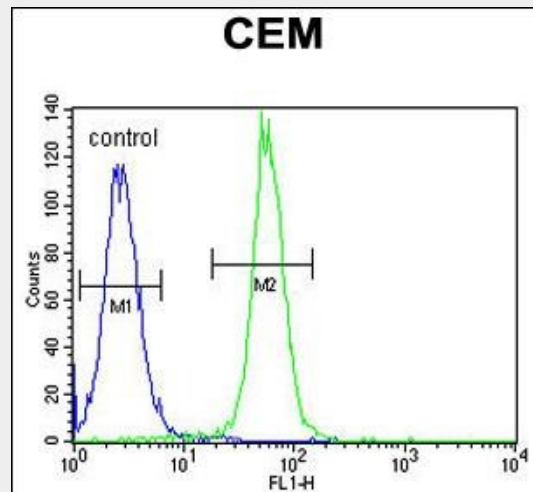
ARL8 Antibody (C-term) - Images



ARL8 Antibody (C-term) (Cat. #AP11320b) western blot analysis in CEM cell line lysates (35ug/lane). This demonstrates the ARL8 antibody detected the ARL8 protein (arrow).



ARL8 Antibody (C-term) (Cat. #AP11320b) immunohistochemistry analysis in formalin fixed and paraffin embedded human kidney tissue followed by peroxidase conjugation of the secondary antibody and DAB staining. This data demonstrates the use of ARL8 Antibody (C-term) for immunohistochemistry. Clinical relevance has not been evaluated.



ARL8 Antibody (C-term) (Cat. #AP11320b) flow cytometric analysis of CEM cells (right histogram) compared to a negative control cell (left histogram). FITC-conjugated goat-anti-rabbit secondary antibodies were used for the analysis.

ARL8 Antibody (C-term) - Background

ARL5B (ARL8) belongs to a family of proteins that are structurally similar to ADP-ribosylation factors (ARFs; see MIM 103180). ARLs and ARFs are part of the RAS superfamily of regulatory GTPases.

ARL8 Antibody (C-term) - References

Grupe, A., et al. Am. J. Hum. Genet. 78(1):78-88(2006)
Barrios-Rodiles, M., et al. Science 307(5715):1621-1625(2005)
Sebald, E., et al. Gene 311, 147-151 (2003) :