

ADCY2 Antibody (Center)
Purified Rabbit Polyclonal Antibody (Pab)
Catalog # AP11322c**Specification**

ADCY2 Antibody (Center) - Product Information

Application	FC, WB,E
Primary Accession	Q08462
Other Accession	P26769 , Q80TL1 , NP_065433.2
Reactivity	Human
Predicted	Mouse, Rat
Host	Rabbit
Clonality	Polyclonal
Isotype	Rabbit IgG
Antigen Region	451-481

ADCY2 Antibody (Center) - Additional Information**Gene ID** 108**Other Names**

Adenylate cyclase type 2, ATP pyrophosphate-lyase 2, Adenylate cyclase type II, Adenylyl cyclase 2, ADCY2, KIAA1060

Target/Specificity

This ADCY2 antibody is generated from rabbits immunized with a KLH conjugated synthetic peptide between 451-481 amino acids from the Central region of human ADCY2.

Dilution

FC~~1:10~50

WB~~1:1000

E~~Use at an assay dependent concentration.

Format

Purified polyclonal antibody supplied in PBS with 0.09% (W/V) sodium azide. This antibody is prepared by Saturated Ammonium Sulfate (SAS) precipitation followed by dialysis against PBS.

Storage

Maintain refrigerated at 2-8°C for up to 2 weeks. For long term storage store at -20°C in small aliquots to prevent freeze-thaw cycles.

Precautions

ADCY2 Antibody (Center) is for research use only and not for use in diagnostic or therapeutic procedures.

ADCY2 Antibody (Center) - Protein Information**Name** ADCY2

Synonyms KIAA1060

Function Catalyzes the formation of the signaling molecule cAMP in response to G-protein signaling (PubMed:[15385642](#)). Down-stream signaling cascades mediate changes in gene expression patterns and lead to increased IL6 production. Functions in signaling cascades downstream of the muscarinic acetylcholine receptors (By similarity).

Cellular Location

Membrane; Multi-pass membrane protein. Cell membrane; Multi-pass membrane protein. Cytoplasm

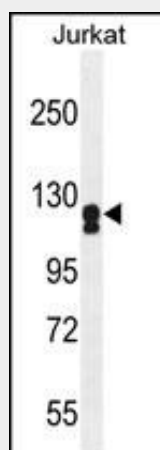
Tissue Location

Detected in zona glomerulosa and zona fasciculata in the adrenal gland (at protein level) (PubMed:11549699). Expressed in brain, especially in caudate nucleus, cerebellum and hippocampus

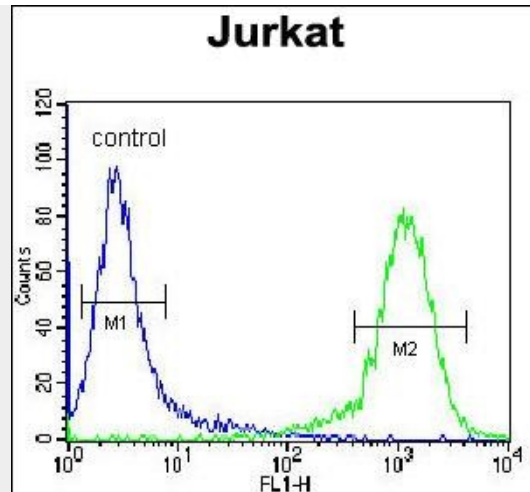
ADCY2 Antibody (Center) - Protocols

Provided below are standard protocols that you may find useful for product applications.

- [Western Blot](#)
- [Blocking Peptides](#)
- [Dot Blot](#)
- [Immunohistochemistry](#)
- [Immunofluorescence](#)
- [Immunoprecipitation](#)
- [Flow Cytometry](#)
- [Cell Culture](#)

ADCY2 Antibody (Center) - Images

ADCY2 Antibody (Center) (Cat. #AP11322c) western blot analysis in Jurkat cell line lysates (35ug/lane). This demonstrates the ADCY2 antibody detected the ADCY2 protein (arrow).



ADCY2 Antibody (Center) (Cat. #AP11322c) flow cytometric analysis of Jurkat cells (right histogram) compared to a negative control cell (left histogram). FITC-conjugated donkey-anti-rabbit secondary antibodies were used for the analysis.

ADCY2 Antibody (Center) - Background

This gene encodes a member of the family of adenylate cyclases, which are membrane-associated enzymes that catalyze the formation of the secondary messenger cyclic adenosine monophosphate (cAMP). This enzyme is insensitive to Ca^{2+} /calmodulin, and is stimulated by the G protein beta and gamma subunit complex.

ADCY2 Antibody (Center) - References

Halls, M.L., et al. EMBO J. 29(16):2772-2787(2010)
Rose, J.E., et al. Mol. Med. 16 (7-8), 247-253 (2010) :
Need, A.C., et al. Eur. J. Hum. Genet. 17(7):946-957(2009)
Uhl, G.R., et al. Arch. Gen. Psychiatry 65(6):683-693(2008)
Sunahara, R.K., et al. Mol. Interv. 2(3):168-184(2002)