

**FBXO21 Antibody (C-term)**  
**Affinity Purified Rabbit Polyclonal Antibody (Pab)**  
**Catalog # AP11326b****Specification**

---

**FBXO21 Antibody (C-term) - Product Information**

Application	IHC-P, WB,E
Primary Accession	<a href="#">O94952</a>
Other Accession	<a href="#">NP_055817.1</a> , <a href="#">NP_296373.1</a>
Reactivity	Mouse
Host	Rabbit
Clonality	Polyclonal
Isotype	Rabbit IgG
Calculated MW	72270
Antigen Region	474-501

**FBXO21 Antibody (C-term) - Additional Information****Gene ID** 23014**Other Names**

F-box only protein 21, FBXO21, FBX21, KIAA0875

**Target/Specificity**

This FBXO21 antibody is generated from rabbits immunized with a KLH conjugated synthetic peptide between 474-501 amino acids from the C-terminal region of human FBXO21.

**Dilution**

IHC-P~~1:50~100

WB~~1:1000

E~~Use at an assay dependent concentration.

**Format**

Purified polyclonal antibody supplied in PBS with 0.09% (W/V) sodium azide. This antibody is purified through a protein A column, followed by peptide affinity purification.

**Storage**

Maintain refrigerated at 2-8°C for up to 2 weeks. For long term storage store at -20°C in small aliquots to prevent freeze-thaw cycles.

**Precautions**

FBXO21 Antibody (C-term) is for research use only and not for use in diagnostic or therapeutic procedures.

**FBXO21 Antibody (C-term) - Protein Information****Name** FBXO21

**Synonyms** FBX21, KIAA0875

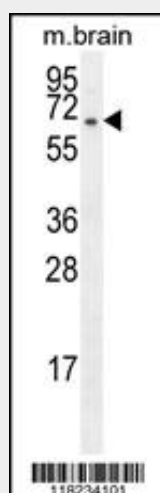
**Function** Substrate-recognition component of the SCF (SKP1-CUL1-F-box protein)-type E3 ubiquitin ligase complex.

### **FBXO21 Antibody (C-term) - Protocols**

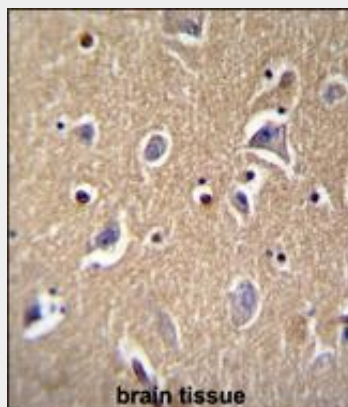
Provided below are standard protocols that you may find useful for product applications.

- [Western Blot](#)
- [Blocking Peptides](#)
- [Dot Blot](#)
- [Immunohistochemistry](#)
- [Immunofluorescence](#)
- [Immunoprecipitation](#)
- [Flow Cytometry](#)
- [Cell Culture](#)

### **FBXO21 Antibody (C-term) - Images**



FBXO21 Antibody (C-term) (Cat. #AP11326b) western blot analysis in mouse brain tissue lysates (35ug/lane). This demonstrates the FBXO21 antibody detected the FBXO21 protein (arrow).



FBXO21 Antibody (C-term) (Cat. #AP11326b) immunohistochemistry analysis in formalin fixed and paraffin embedded human brain tissue followed by peroxidase conjugation of the secondary

antibody and DAB staining. This data demonstrates the use of FBXO21 Antibody (C-term) for immunohistochemistry. Clinical relevance has not been evaluated.

#### **FBXO21 Antibody (C-term) - Background**

This gene encodes a member of the F-box protein family which is characterized by an approximately 40 amino acid motif, the F-box. The F-box proteins constitute one of the four subunits of ubiquitin protein ligase complex called SCFs (SKP1-cullin-F-box), which function in phosphorylation-dependent ubiquitination. The F-box proteins are divided into 3 classes: Fbws containing WD-40 domains, Fbls containing leucine-rich repeats, and Fbxs containing either different protein-protein interaction modules or no recognizable motifs. The protein encoded by this gene belongs to the Fbxs class. Alternative splicing of this gene generates 2 transcript variants.

#### **FBXO21 Antibody (C-term) - References**

Nakayama, M., et al. Genome Res. 12(11):1773-1784(2002)  
Cenciarelli, C., et al. Curr. Biol. 9(20):1177-1179(1999)