

**DPPA5 Antibody (N-term)**  
**Affinity Purified Rabbit Polyclonal Antibody (Pab)**  
**Catalog # AP11330a**

**Specification**

---

**DPPA5 Antibody (N-term) - Product Information**

Application	WB, FC,E
Primary Accession	<a href="#">A6NC42</a>
Other Accession	<a href="#">NP_001020461.1</a>
Reactivity	Human
Host	Rabbit
Clonality	Polyclonal
Isotype	Rabbit IgG
Antigen Region	2-31

**DPPA5 Antibody (N-term) - Additional Information**

**Gene ID** 340168

**Other Names**

Developmental pluripotency-associated 5 protein, hDPPA5, Embryonal stem cell-specific gene 1 protein, ESG-1, DPPA5, ESG1

**Target/Specificity**

This DPPA5 antibody is generated from rabbits immunized with a KLH conjugated synthetic peptide between 2-31 amino acids from the N-terminal region of human DPPA5.

**Dilution**

WB~~1:1000  
FC~~1:10~50  
E~~Use at an assay dependent concentration.

**Format**

Purified polyclonal antibody supplied in PBS with 0.09% (W/V) sodium azide. This antibody is purified through a protein A column, followed by peptide affinity purification.

**Storage**

Maintain refrigerated at 2-8°C for up to 2 weeks. For long term storage store at -20°C in small aliquots to prevent freeze-thaw cycles.

**Precautions**

DPPA5 Antibody (N-term) is for research use only and not for use in diagnostic or therapeutic procedures.

**DPPA5 Antibody (N-term) - Protein Information**

**Name** DPPA5

**Synonyms** ESG1

**Function** Involved in the maintenance of embryonic stem (ES) cell pluripotency. Dispensable for self-renewal of pluripotent ES cells and establishment of germ cells. Associates with specific target mRNAs (By similarity).

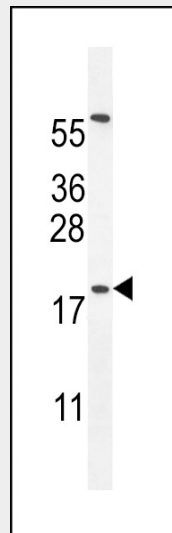
**Cellular Location**

Cytoplasm.

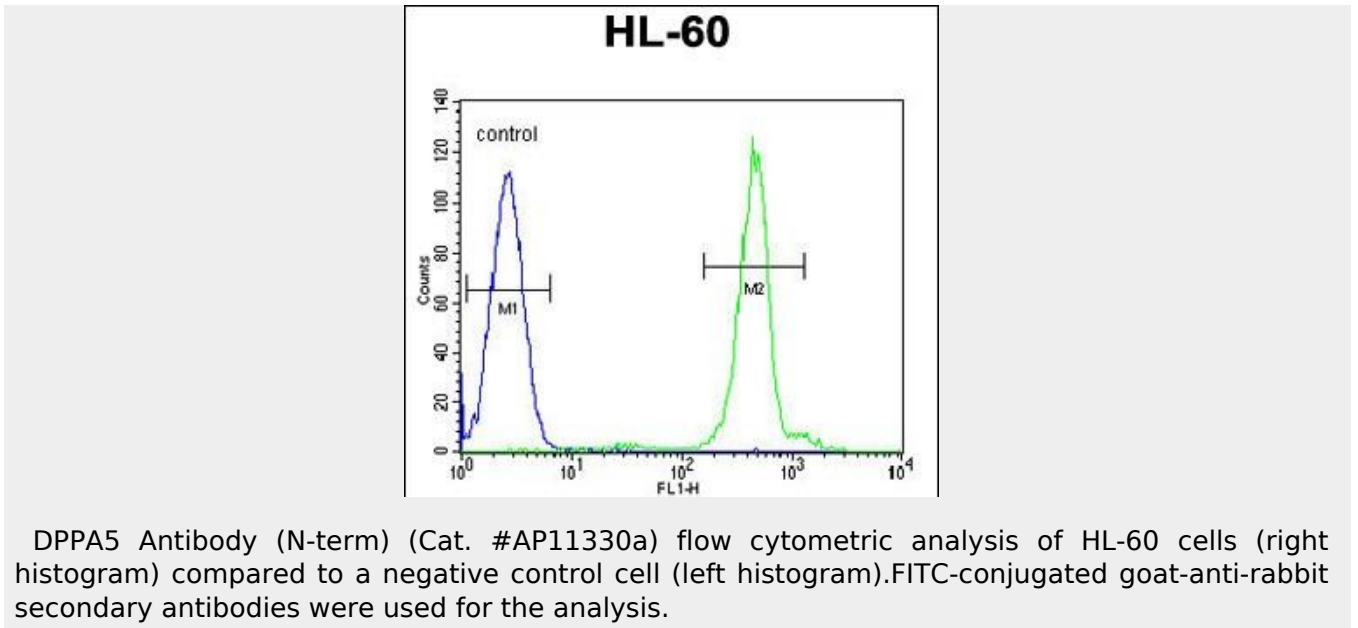
**DPPA5 Antibody (N-term) - Protocols**

Provided below are standard protocols that you may find useful for product applications.

- [Western Blot](#)
- [Blocking Peptides](#)
- [Dot Blot](#)
- [Immunohistochemistry](#)
- [Immunofluorescence](#)
- [Immunoprecipitation](#)
- [Flow Cytometry](#)
- [Cell Culture](#)

**DPPA5 Antibody (N-term) - Images**

DPPA5 Antibody (N-term) (Cat. #AP11330a) western blot analysis in HL-60 cell line lysates (35ug/lane). This demonstrates the DPPA5 antibody detected the DPPA5 protein (arrow).



#### **DPPA5 Antibody (N-term) - Background**

Involved in the maintenance of embryonic stem (ES) cell pluripotency. Dispensable for self-renewal of pluripotent ES cells and establishment of germ cells. Associates with specific target mRNAs (By similarity).

#### **DPPA5 Antibody (N-term) - References**

Pierre, A., et al. Genomics 90(5):583-594(2007)  
Kim, S.K., et al. Stem Cells 23(4):458-462(2005)