

COCH Antibody (C-term)
Affinity Purified Rabbit Polyclonal Antibody (Pab)
Catalog # AP11332b**Specification**

COCH Antibody (C-term) - Product Information

Application	WB,E
Primary Accession	O43405
Other Accession	Q5EA64 , NP_004077.1 , NP_001128530.1
Reactivity	Human
Predicted	Bovine
Host	Rabbit
Clonality	Polyclonal
Isotype	Rabbit IgG
Calculated MW	59483
Antigen Region	492-520

COCH Antibody (C-term) - Additional Information**Gene ID** 1690**Other Names**

Cochlin, COCH-5B2, COCH, COCH5B2

Target/Specificity

This COCH antibody is generated from rabbits immunized with a KLH conjugated synthetic peptide between 492-520 amino acids from the C-terminal region of human COCH.

Dilution

WB~~1:1000

E~~Use at an assay dependent concentration.

Format

Purified polyclonal antibody supplied in PBS with 0.09% (W/V) sodium azide. This antibody is purified through a protein A column, followed by peptide affinity purification.

Storage

Maintain refrigerated at 2-8°C for up to 2 weeks. For long term storage store at -20°C in small aliquots to prevent freeze-thaw cycles.

Precautions

COCH Antibody (C-term) is for research use only and not for use in diagnostic or therapeutic procedures.

COCH Antibody (C-term) - Protein Information**Name** COCH

Synonyms COCH5B2

Function Plays a role in the control of cell shape and motility in the trabecular meshwork.

Cellular Location

Secreted, extracellular space, extracellular matrix

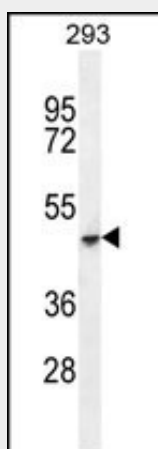
Tissue Location

Expressed in inner ear structures; the cochlea and the vestibule

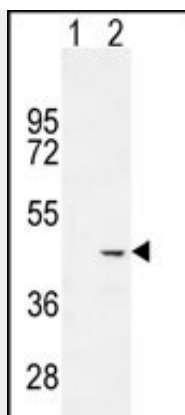
COCH Antibody (C-term) - Protocols

Provided below are standard protocols that you may find useful for product applications.

- [Western Blot](#)
- [Blocking Peptides](#)
- [Dot Blot](#)
- [Immunohistochemistry](#)
- [Immunofluorescence](#)
- [Immunoprecipitation](#)
- [Flow Cytometry](#)
- [Cell Culture](#)

COCH Antibody (C-term) - Images

COCH Antibody (C-term) (Cat. #AP11332b) western blot analysis in 293 cell line lysates (35ug/lane). This demonstrates the COCH antibody detected the COCH protein (arrow).



Western blot analysis of COCH (arrow) using rabbit polyclonal COCH Antibody (C-term) (Cat. #AP11332b). 293 cell lysates (2 ug/lane) either nontransfected (Lane 1) or transiently transfected (Lane 2) with the COCH gene.

COCH Antibody (C-term) - Background

The protein encoded by this gene is highly conserved in human, mouse, and chicken, showing 94% and 79% amino acid identity of human to mouse and chicken sequences, respectively. Hybridization to this gene was detected in spindle-shaped cells located along nerve fibers between the auditory ganglion and sensory epithelium. These cells accompany neurites at the habenula perforata, the opening through which neurites extend to innervate hair cells. This and the pattern of expression of this gene in chicken inner ear paralleled the histologic findings of acidophilic deposits, consistent with mucopolysaccharide ground substance, in temporal bones from DFNA9 (autosomal dominant nonsyndromic sensorineural deafness 9) patients. Mutations that cause DFNA9 have been reported in this gene. Alternative splicing results in multiple transcript variants encoding the same protein. Additional splice variants encoding distinct isoforms have been described but their biological validities have not been demonstrated. [provided by RefSeq].

COCH Antibody (C-term) - References

- Ikezono, T., et al. Acta Otolaryngol. 130(8):881-887(2010)
- Yao, J., et al. J. Biol. Chem. 285(20):14909-14919(2010)
- Baek, J.I., et al. Clin. Genet. 77(4):399-403(2010)
- Davila, S., et al. Genes Immun. 11(3):232-238(2010)
- Lee, E.S., et al. Invest. Ophthalmol. Vis. Sci. 51(4):2060-2066(2010)