

KT33A Antibody (N-term)
Affinity Purified Rabbit Polyclonal Antibody (Pab)
Catalog # AP11333a**Specification**

KT33A Antibody (N-term) - Product Information

Application	WB,E
Primary Accession	O76009
Other Accession	O14525 , O76011 , O15323 , NP_004129.2
Reactivity	Mouse
Predicted	Human
Host	Rabbit
Clonality	Polyclonal
Isotype	Rabbit IgG
Calculated MW	45940
Antigen Region	56-85

KT33A Antibody (N-term) - Additional Information**Gene ID** 3883**Other Names**

Keratin, type I cuticular Ha3-I, Hair keratin, type I Ha3-I, Keratin-33A, K33A, KRT33A, HHA3-I, HKA3A, KRTHA3A

Target/Specificity

This KT33A antibody is generated from rabbits immunized with a KLH conjugated synthetic peptide between 56-85 amino acids from the N-terminal region of human KT33A.

Dilution

WB~~1:1000

E~~Use at an assay dependent concentration.

Format

Purified polyclonal antibody supplied in PBS with 0.09% (W/V) sodium azide. This antibody is purified through a protein A column, followed by peptide affinity purification.

Storage

Maintain refrigerated at 2-8°C for up to 2 weeks. For long term storage store at -20°C in small aliquots to prevent freeze-thaw cycles.

Precautions

KT33A Antibody (N-term) is for research use only and not for use in diagnostic or therapeutic procedures.

KT33A Antibody (N-term) - Protein Information**Name** KRT33A

Synonyms HHA3-I, HKA3A, KRTHA3A

Tissue Location

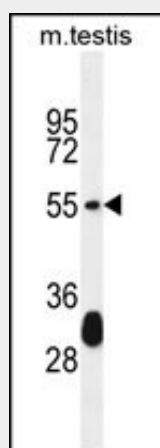
Expressed in the hair follicles.

KT33A Antibody (N-term) - Protocols

Provided below are standard protocols that you may find useful for product applications.

- [Western Blot](#)
- [Blocking Peptides](#)
- [Dot Blot](#)
- [Immunohistochemistry](#)
- [Immunofluorescence](#)
- [Immunoprecipitation](#)
- [Flow Cytometry](#)
- [Cell Culture](#)

KT33A Antibody (N-term) - Images



KT33A Antibody (N-term) (Cat. #AP11333a) western blot analysis in mouse testis tissue lysates (35ug/lane). This demonstrates the KT33A antibody detected the KT33A protein (arrow).

KT33A Antibody (N-term) - Background

The protein encoded by this gene is a member of the keratin gene family. It is one of the type I hair keratin genes which are clustered in a region of chromosome 17q12-q21 and have the same direction of transcription. As a type I hair keratin, it is an acidic protein which heterodimerizes with type II keratins to form hair and nails. There are two isoforms of this protein, encoded by two separate genes, KRTHA3A and KRTHA3B. [provided by RefSeq].

KT33A Antibody (N-term) - References

Ewing, R.M., et al. Mol. Syst. Biol. 3, 89 (2007) :
Schweizer, J., et al. J. Cell Biol. 174(2):169-174(2006)
Rogers, M.A., et al. Differentiation 72 (9-10), 527-540 (2004) :
Langbein, L., et al. J. Biol. Chem. 274(28):19874-19884(1999)

Rogers, M.A., et al. J. Biol. Chem. 273(41):26683-26691(1998)