

**FX4L1 Antibody (N-term)**  
**Affinity Purified Rabbit Polyclonal Antibody (Pab)**  
**Catalog # AP11337a****Specification**

---

**FX4L1 Antibody (N-term) - Product Information**

Application	WB, FC,E
Primary Accession	<a href="#">Q9NU39</a>
Other Accession	<a href="#">Q5VV16</a> , <a href="#">Q8WXT5</a> , <a href="#">Q6VB85</a> , <a href="#">NP_036316.1</a>
Reactivity	Human
Host	Rabbit
Clonality	Polyclonal
Isotype	Rabbit IgG
Calculated MW	43610
Antigen Region	1-30

**FX4L1 Antibody (N-term) - Additional Information****Gene ID** 200350**Other Names**

Forkhead box protein D4-like 1, FOXD4-like 1, FOXD4L1

**Target/Specificity**

This FX4L1 antibody is generated from rabbits immunized with a KLH conjugated synthetic peptide between 1-30 amino acids from the N-terminal region of human FX4L1.

**Dilution**

WB~~1:1000

FC~~1:10~50

E~~Use at an assay dependent concentration.

**Format**

Purified polyclonal antibody supplied in PBS with 0.09% (W/V) sodium azide. This antibody is purified through a protein A column, followed by peptide affinity purification.

**Storage**

Maintain refrigerated at 2-8°C for up to 2 weeks. For long term storage store at -20°C in small aliquots to prevent freeze-thaw cycles.

**Precautions**

FX4L1 Antibody (N-term) is for research use only and not for use in diagnostic or therapeutic procedures.

**FX4L1 Antibody (N-term) - Protein Information****Name** FOXD4L1

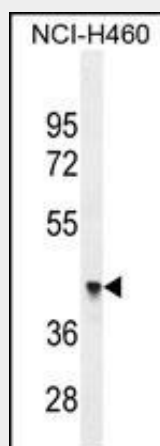
**Cellular Location**

Nucleus {ECO:0000255|PROSITE-ProRule:PRU00089}.

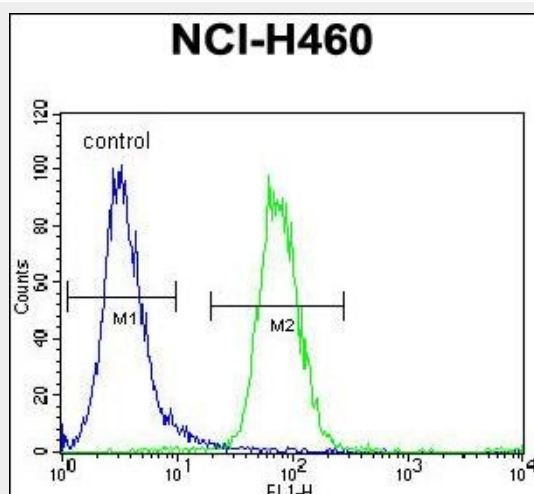
**FX4L1 Antibody (N-term) - Protocols**

Provided below are standard protocols that you may find useful for product applications.

- [Western Blot](#)
- [Blocking Peptides](#)
- [Dot Blot](#)
- [Immunohistochemistry](#)
- [Immunofluorescence](#)
- [Immunoprecipitation](#)
- [Flow Cytometry](#)
- [Cell Culture](#)

**FX4L1 Antibody (N-term) - Images**

FX4L1 Antibody (N-term) (Cat. #AP11337a) western blot analysis in NCI-H460 cell line lysates (35ug/lane). This demonstrates the FX4L1 antibody detected the FX4L1 protein (arrow).



FX4L1 Antibody (N-term) (Cat. #AP11337a) flow cytometric analysis of NCI-H460 cells (right histogram) compared to a negative control cell (left histogram). FITC-conjugated goat-anti-rabbit secondary antibodies were used for the analysis.

**FX4L1 Antibody (N-term) - Background**

This gene is a member of the forkhead/winged-helix (FOX) family of transcription factors with highly conserved FOX DNA-binding domains. Members of the FOX family of transcription factors are regulators of embryogenesis and may play a role in human cancer. This gene lies in a region of chromosome 2 that surrounds the site where two ancestral chromosomes fused to form human chromosome 2. This region is duplicated elsewhere in the human genome, primarily in subtelomeric and pericentromeric locations, thus multiple copies of this gene have been found.

**FX4L1 Antibody (N-term) - References**

Hillier, L.W., et al. Nature 434(7034):724-731(2005)  
Wong, A., et al. Genomics 84(2):239-247(2004)  
Fan, Y., et al. Genome Res. 12(11):1663-1672(2002)