

SELV Antibody (C-term)
Affinity Purified Rabbit Polyclonal Antibody (Pab)
Catalog # AP11340b**Specification**

SELV Antibody (C-term) - Product Information

Application	FC, IF, WB, IHC-P,E
Primary Accession	P59797
Other Accession	NP_874363.1
Reactivity	Human
Host	Rabbit
Clonality	Polyclonal
Isotype	Rabbit IgG
Calculated MW	36800
Antigen Region	296-324

SELV Antibody (C-term) - Additional Information**Gene ID** 348303**Other Names**

Selenoprotein V, SelV, SELV

Target/Specificity

This SELV antibody is generated from rabbits immunized with a KLH conjugated synthetic peptide between 296-324 amino acids from the C-terminal region of human SELV.

Dilution

FC~~1:10~50

IF~~1:10~50

WB~~1:1000

IHC-P~~1:50~100

E~~Use at an assay dependent concentration.

Format

Purified polyclonal antibody supplied in PBS with 0.09% (W/V) sodium azide. This antibody is purified through a protein A column, followed by peptide affinity purification.

Storage

Maintain refrigerated at 2-8°C for up to 2 weeks. For long term storage store at -20°C in small aliquots to prevent freeze-thaw cycles.

Precautions

SELV Antibody (C-term) is for research use only and not for use in diagnostic or therapeutic procedures.

SELV Antibody (C-term) - Protein Information

Name SELENNOV {ECO:0000303|PubMed:27645994, ECO:0000312|HGNC:HGNC:30399}

Function May be involved in a redox-related process.

Tissue Location

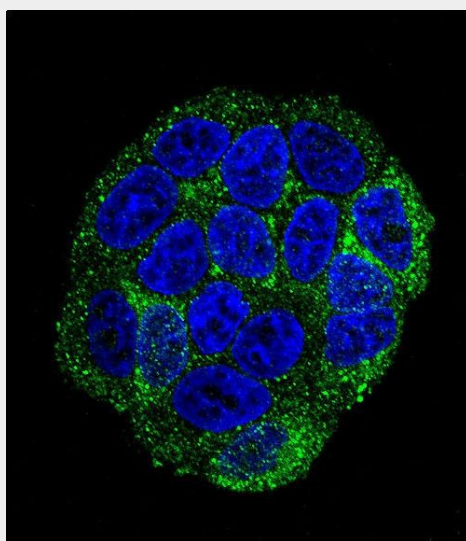
Testis specific..

SELV Antibody (C-term) - Protocols

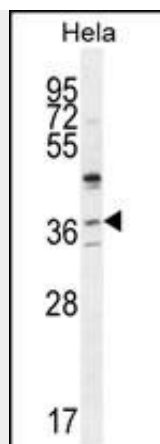
Provided below are standard protocols that you may find useful for product applications.

- [Western Blot](#)
- [Blocking Peptides](#)
- [Dot Blot](#)
- [Immunohistochemistry](#)
- [Immunofluorescence](#)
- [Immunoprecipitation](#)
- [Flow Cytometry](#)
- [Cell Culture](#)

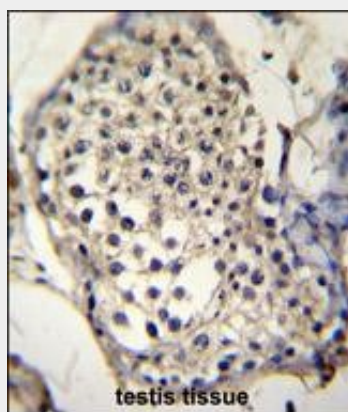
SELV Antibody (C-term) - Images



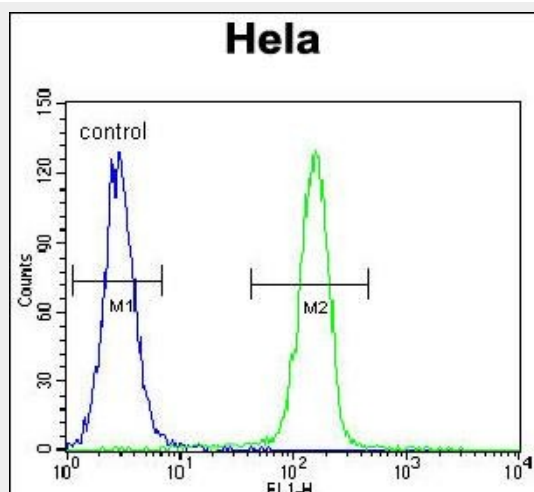
Confocal immunofluorescent analysis of SELV Antibody (C-term)(Cat#AP11340b) with HeLa cell followed by Alexa Fluor 488-conjugated goat anti-rabbit IgG (green). DAPI was used to stain the cell nuclear (blue).



SELV Antibody (C-term) (Cat. #AP11340b) western blot analysis in HeLa cell line lysates (35ug/lane). This demonstrates the SELV antibody detected the SELV protein (arrow).



SELV Antibody (C-term) (Cat. #AP11340b) immunohistochemistry analysis in formalin fixed and paraffin embedded human testis tissue followed by peroxidase conjugation of the secondary antibody and DAB staining. This data demonstrates the use of SELV Antibody (C-term) for immunohistochemistry. Clinical relevance has not been evaluated.



SELV Antibody (C-term) (Cat. #AP11340b) flow cytometric analysis of HeLa cells (right histogram) compared to a negative control cell (left histogram). FITC-conjugated goat-anti-rabbit secondary antibodies were used for the analysis.

SELV Antibody (C-term) - Background

This gene encodes a selenoprotein, which contains a selenocysteine (Sec) residue at its active site. The selenocysteine is encoded by the UGA codon that normally signals translation termination. The 3' UTR of selenoprotein genes have a common stem-loop structure, the sec insertion sequence (SECIS), that is necessary for the recognition of UGA as a Sec codon rather than as a stop signal.

SELV Antibody (C-term) - References

Kryukov, G.V., et al. Science 300(5624):1439-1443(2003)