

OR4F15 Antibody (N-term)
Affinity Purified Rabbit Polyclonal Antibody (Pab)
Catalog # AP11344a**Specification**

OR4F15 Antibody (N-term) - Product Information

Application	WB, FC,E
Primary Accession	Q8NGB8
Other Accession	NP_001001674.1
Reactivity	Human
Host	Rabbit
Clonality	Polyclonal
Isotype	Rabbit IgG
Calculated MW	35369
Antigen Region	69-96

OR4F15 Antibody (N-term) - Additional Information**Gene ID** 390649**Other Names**

Olfactory receptor 4F15, Olfactory receptor OR15-14, OR4F15

Target/Specificity

This OR4F15 antibody is generated from rabbits immunized with a KLH conjugated synthetic peptide between 69-96 amino acids from the N-terminal region of human OR4F15.

Dilution

WB~~1:1000

FC~~1:10~50

E~~Use at an assay dependent concentration.

Format

Purified polyclonal antibody supplied in PBS with 0.09% (W/V) sodium azide. This antibody is purified through a protein A column, followed by peptide affinity purification.

Storage

Maintain refrigerated at 2-8°C for up to 2 weeks. For long term storage store at -20°C in small aliquots to prevent freeze-thaw cycles.

Precautions

OR4F15 Antibody (N-term) is for research use only and not for use in diagnostic or therapeutic procedures.

OR4F15 Antibody (N-term) - Protein Information**Name** OR4F15

Function Odorant receptor.

Cellular Location

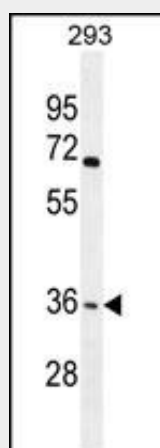
Cell membrane; Multi-pass membrane protein.

OR4F15 Antibody (N-term) - Protocols

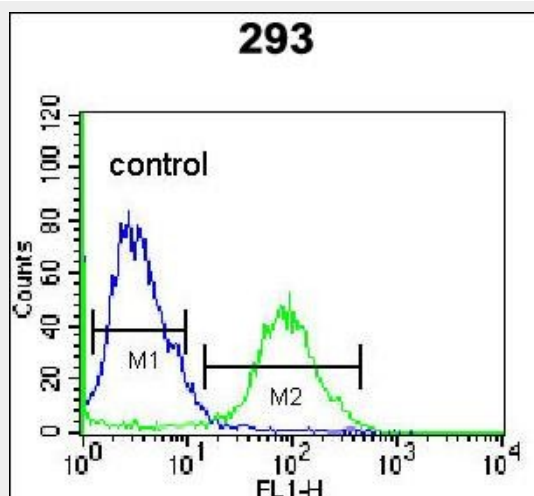
Provided below are standard protocols that you may find useful for product applications.

- [Western Blot](#)
- [Blocking Peptides](#)
- [Dot Blot](#)
- [Immunohistochemistry](#)
- [Immunofluorescence](#)
- [Immunoprecipitation](#)
- [Flow Cytometry](#)
- [Cell Culture](#)

OR4F15 Antibody (N-term) - Images



OR4F15 Antibody (N-term) (Cat. #AP11344a) western blot analysis in 293 cell line lysates (35ug/lane). This demonstrates the OR4F15 antibody detected the OR4F15 protein (arrow).



OR4F15 Antibody (N-term) (Cat. #AP11344a) flow cytometric analysis of 293 cells (right

histogram) compared to a negative control cell (left histogram). FITC-conjugated goat-anti-rabbit secondary antibodies were used for the analysis.

OR4F15 Antibody (N-term) - Background

Olfactory receptors interact with odorant molecules in the nose, to initiate a neuronal response that triggers the perception of a smell. The olfactory receptor proteins are members of a large family of G-protein-coupled receptors (GPCR) arising from single coding-exon genes. Olfactory receptors share a 7-transmembrane domain structure with many neurotransmitter and hormone receptors and are responsible for the recognition and G protein-mediated transduction of odorant signals. The olfactory receptor gene family is the largest in the genome. The nomenclature assigned to the olfactory receptor genes and proteins for this organism is independent of other organisms.

OR4F15 Antibody (N-term) - References

Malnic, B., et al. Proc. Natl. Acad. Sci. U.S.A. 101(8):2584-2589(2004)
Gilad, Y., et al. Am. J. Hum. Genet. 73(3):489-501(2003)
Fuchs, T., et al. Genomics 80(3):295-302(2002)