

NIPAL1 Antibody (C-term)
Affinity Purified Rabbit Polyclonal Antibody (Pab)
Catalog # AP11352b

Specification

NIPAL1 Antibody (C-term) - Product Information

Application	WB, FC,E
Primary Accession	O6NVV3
Other Accession	NP_997213.1
Reactivity	Human, Mouse
Host	Rabbit
Clonality	Polyclonal
Isotype	Rabbit IgG
Calculated MW	44638
Antigen Region	381-410

NIPAL1 Antibody (C-term) - Additional Information

Gene ID 152519

Other Names

Magnesium transporter NIPA3, NIPA-like protein 1, Non-imprinted in Prader-Willi/Angelman syndrome region protein 3, NIPAL1, NIPA3, NPAL1

Target/Specificity

This NIPAL1 antibody is generated from rabbits immunized with a KLH conjugated synthetic peptide between 381-410 amino acids from the C-terminal region of human NIPAL1.

Dilution

WB~~1:1000

FC~~1:10~50

E~~Use at an assay dependent concentration.

Format

Purified polyclonal antibody supplied in PBS with 0.09% (W/V) sodium azide. This antibody is purified through a protein A column, followed by peptide affinity purification.

Storage

Maintain refrigerated at 2-8°C for up to 2 weeks. For long term storage store at -20°C in small aliquots to prevent freeze-thaw cycles.

Precautions

NIPAL1 Antibody (C-term) is for research use only and not for use in diagnostic or therapeutic procedures.

NIPAL1 Antibody (C-term) - Protein Information

Name NIPAL1

Synonyms NIPA3, NPAL1

Function Acts as a Mg(2+) transporter. Can also transport other divalent cations such as Fe(2+), Sr(2+), Ba(2+), Mn(2+), Cu(2+) and Co(2+) but to a much less extent than Mg(2+) (By similarity).

Cellular Location

Golgi apparatus membrane {ECO:0000250|UniProtKB:Q8BMW7}; Multi-pass membrane protein

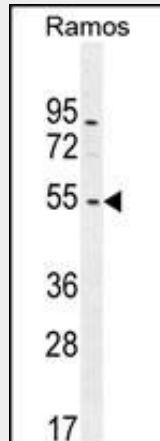
Tissue Location

Expressed in the pancreatic islets.

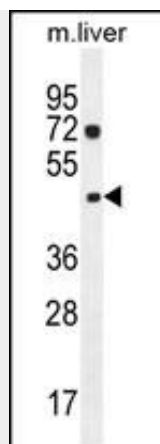
NIPAL1 Antibody (C-term) - Protocols

Provided below are standard protocols that you may find useful for product applications.

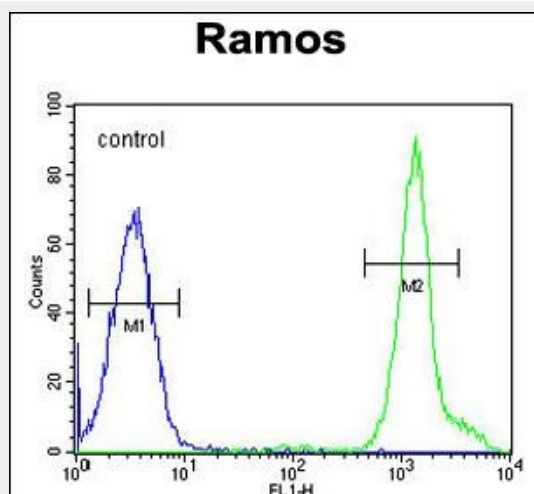
- [Western Blot](#)
- [Blocking Peptides](#)
- [Dot Blot](#)
- [Immunohistochemistry](#)
- [Immunofluorescence](#)
- [Immunoprecipitation](#)
- [Flow Cytometry](#)
- [Cell Culture](#)

NIPAL1 Antibody (C-term) - Images

NIPAL1 Antibody (C-term) (Cat. #AP11352b) western blot analysis in Ramos cell line lysates (35ug/lane). This demonstrates the NIPAL1 antibody detected the NIPAL1 protein (arrow).



NIPAL1 Antibody (C-term) (Cat. #AP11352b) western blot analysis in mouse liver tissue lysates (35ug/lane). This demonstrates the NIPAL1 antibody detected the NIPAL1 protein (arrow).



NIPAL1 Antibody (C-term) (Cat. #AP11352b) flow cytometric analysis of Ramos cells (right histogram) compared to a negative control cell (left histogram). FITC-conjugated goat-anti-rabbit secondary antibodies were used for the analysis.

NIPAL1 Antibody (C-term) - Background

Acts as a Mg(2+) transporter. Can also transport other divalent cations such as Fe(2+), Sr(2+), Ba(2+), Mn(2+), Cu(2+) and Co(2+) but to a much less extent than Mg(2+) (By similarity).

NIPAL1 Antibody (C-term) - References

Gerhard, D.S., et al. Genome Res. 14 (10B), 2121-2127 (2004) :