

WDR70 Antibody (C-term)
Affinity Purified Rabbit Polyclonal Antibody (Pab)
Catalog # AP11355B

Specification

WDR70 Antibody (C-term) - Product Information

Application	WB, FC, IF, IHC-P,E
Primary Accession	Q9NW82
Other Accession	Q5EB92 , Q3TWF6 , Q32LB0 , NP_060504.1
Reactivity	Human
Predicted	Bovine, Mouse, Rat
Host	Rabbit
Clonality	Polyclonal
Isotype	Rabbit IgG
Calculated MW	73201
Antigen Region	575-604

WDR70 Antibody (C-term) - Additional Information

Gene ID 55100

Other Names

WD repeat-containing protein 70, WDR70

Target/Specificity

This WDR70 antibody is generated from rabbits immunized with a KLH conjugated synthetic peptide between 575-604 amino acids from the C-terminal region of human WDR70.

Dilution

WB~~1:1000
FC~~1:10~50
IF~~1:10~50
IHC-P~~1:50~100
E~~Use at an assay dependent concentration.

Format

Purified polyclonal antibody supplied in PBS with 0.09% (W/V) sodium azide. This antibody is purified through a protein A column, followed by peptide affinity purification.

Storage

Maintain refrigerated at 2-8°C for up to 2 weeks. For long term storage store at -20°C in small aliquots to prevent freeze-thaw cycles.

Precautions

WDR70 Antibody (C-term) is for research use only and not for use in diagnostic or therapeutic procedures.

WDR70 Antibody (C-term) - Protein Information

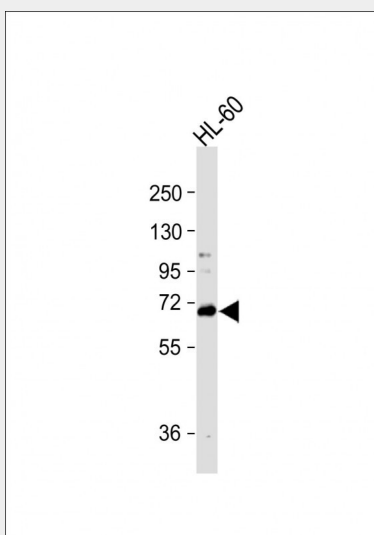
Name WDR70

WDR70 Antibody (C-term) - Protocols

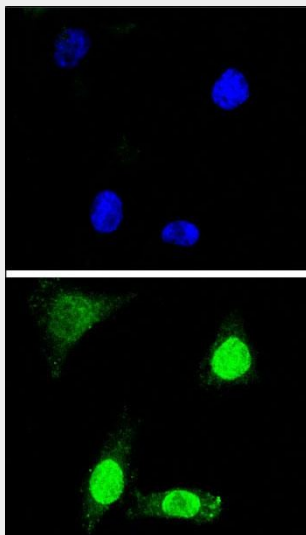
Provided below are standard protocols that you may find useful for product applications.

- [Western Blot](#)
- [Blocking Peptides](#)
- [Dot Blot](#)
- [Immunohistochemistry](#)
- [Immunofluorescence](#)
- [Immunoprecipitation](#)
- [Flow Cytometry](#)
- [Cell Culture](#)

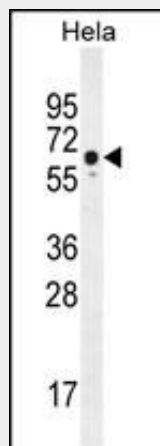
WDR70 Antibody (C-term) - Images



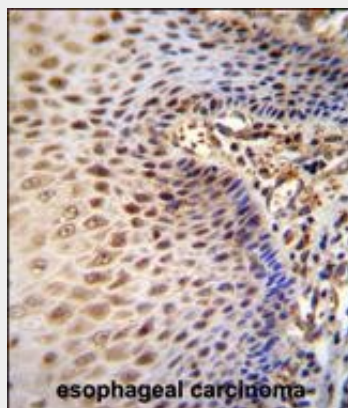
Anti-WDR70 Antibody (C-term) at 1:1000 dilution + HL-60 whole cell lysate Lysates/proteins at 20 μ g per lane. Secondary Goat Anti-Rabbit IgG, (H+L), Peroxidase conjugated at 1/10000 dilution. Predicted band size : 70 kDa Blocking/Dilution buffer: 5% NFDM/TBST.



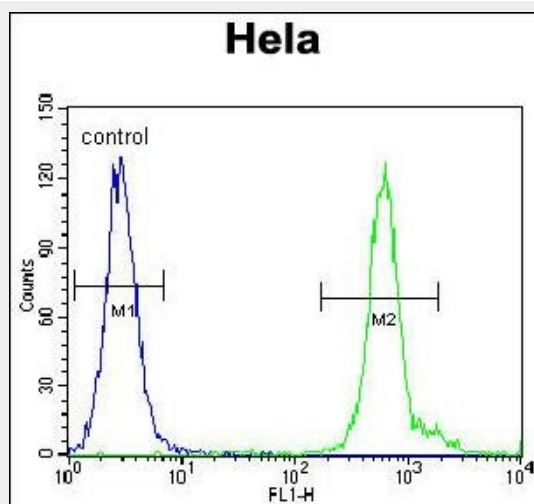
Confocal immunofluorescent analysis of WDR70 Antibody (C-term)(Cat#AP11355b) with Hela cell followed by Alexa Fluor 488-conjugated goat anti-rabbit IgG (green). DAPI was used to stain the cell nuclear (blue).



WDR70 Antibody (C-term) (Cat. #AP11355b) western blot analysis in Hela cell line lysates (35ug/lane). This demonstrates the WDR70 antibody detected the WDR70 protein (arrow).



WDR70 Antibody (C-term) (Cat. #AP11355b) immunohistochemistry analysis in formalin fixed and paraffin embedded human esophageal carcinoma followed by peroxidase conjugation of the secondary antibody and DAB staining. This data demonstrates the use of WDR70 Antibody (C-term) for immunohistochemistry. Clinical relevance has not been evaluated.



WDR70 Antibody (C-term) (Cat. #AP11355b) flow cytometric analysis of Hela cells (right

histogram) compared to a negative control cell (left histogram).FITC-conjugated goat-anti-rabbit secondary antibodies were used for the analysis.

WDR70 Antibody (C-term) - References

Olsen, J.V., et al. Cell 127(3):635-648(2006)
Ota, T., et al. Nat. Genet. 36(1):40-45(2004)