

LRRC46 Antibody (N-term)
Affinity Purified Rabbit Polyclonal Antibody (Pab)
Catalog # AP11359A**Specification**

LRRC46 Antibody (N-term) - Product Information

Application	WB, IHC-P,E
Primary Accession	O96FV0
Other Accession	NP_219481.1
Reactivity	Human
Host	Rabbit
Clonality	Polyclonal
Isotype	Rabbit IgG
Calculated MW	35340
Antigen Region	38-67

LRRC46 Antibody (N-term) - Additional Information**Gene ID** 90506**Other Names**

Leucine-rich repeat-containing protein 46, LRRC46

Target/Specificity

This LRRC46 antibody is generated from rabbits immunized with a KLH conjugated synthetic peptide between 38-67 amino acids from the N-terminal region of human LRRC46.

Dilution

WB~~1:1000

IHC-P~~1:50~100

Format

Purified polyclonal antibody supplied in PBS with 0.09% (W/V) sodium azide. This antibody is purified through a protein A column, followed by peptide affinity purification.

Storage

Maintain refrigerated at 2-8°C for up to 2 weeks. For long term storage store at -20°C in small aliquots to prevent freeze-thaw cycles.

Precautions

LRRC46 Antibody (N-term) is for research use only and not for use in diagnostic or therapeutic procedures.

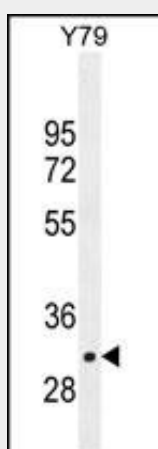
LRRC46 Antibody (N-term) - Protein Information**Name** LRRC46

LRRC46 Antibody (N-term) - Protocols

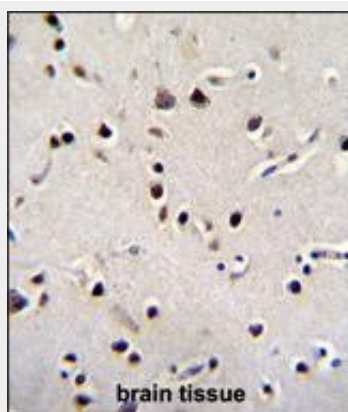
Provided below are standard protocols that you may find useful for product applications.

- [Western Blot](#)
- [Blocking Peptides](#)
- [Dot Blot](#)
- [Immunohistochemistry](#)
- [Immunofluorescence](#)
- [Immunoprecipitation](#)
- [Flow Cytometry](#)
- [Cell Culture](#)

LRRC46 Antibody (N-term) - Images



LRRC46 Antibody (N-term) (Cat. #AP11359a) western blot analysis in Y79 cell line lysates (35ug/lane). This demonstrates the LRRC46 antibody detected the LRRC46 protein (arrow).



LRRC46 Antibody (N-term) (Cat. #AP11359a) immunohistochemistry analysis in formalin fixed and paraffin embedded human brain tissue followed by peroxidase conjugation of the secondary antibody and DAB staining. This data demonstrates the use of LRRC46 Antibody (N-term) for immunohistochemistry. Clinical relevance has not been evaluated.

LRRC46 Antibody (N-term) - References

Lamesch, P., et al. Genomics 89(3):307-315(2007)