

**FAM160B1 Antibody (C-term)**  
**Affinity Purified Rabbit Polyclonal Antibody (Pab)**  
**Catalog # AP11364b**

**Specification**

---

**FAM160B1 Antibody (C-term) - Product Information**

Application	WB, IHC-P,E
Primary Accession	<a href="#">Q5W0V3</a>
Other Accession	<a href="#">Q8CDM8</a> , <a href="#">A0JNG7</a> , <a href="#">NP_065991.3</a> , <a href="#">NP_001128523.1</a>
Reactivity	Human, Mouse
Predicted	Bovine
Host	Rabbit
Clonality	Polyclonal
Isotype	Rabbit IgG
Calculated MW	86558
Antigen Region	584-614

**FAM160B1 Antibody (C-term) - Additional Information**

**Gene ID** 57700

**Other Names**

Protein FAM160B1, FAM160B1, KIAA1600

**Target/Specificity**

This FAM160B1 antibody is generated from rabbits immunized with a KLH conjugated synthetic peptide between 584-614 amino acids from the C-terminal region of human FAM160B1.

**Dilution**

WB~~1:1000  
IHC-P~~1:50~100

**Format**

Purified polyclonal antibody supplied in PBS with 0.09% (W/V) sodium azide. This antibody is purified through a protein A column, followed by peptide affinity purification.

**Storage**

Maintain refrigerated at 2-8°C for up to 2 weeks. For long term storage store at -20°C in small aliquots to prevent freeze-thaw cycles.

**Precautions**

FAM160B1 Antibody (C-term) is for research use only and not for use in diagnostic or therapeutic procedures.

**FAM160B1 Antibody (C-term) - Protein Information**

**Name** FHIP2A ([HGNC:29320](#))

**Synonyms** FAM160B1, KIAA1600

**Function** Required for proper functioning of the nervous system.

**Tissue Location**

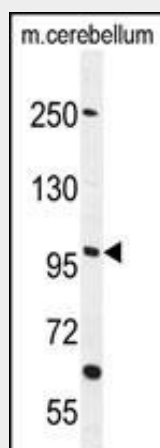
[Isoform 1]: Expressed in all tissues tested, highly expressed brain.

**FAM160B1 Antibody (C-term) - Protocols**

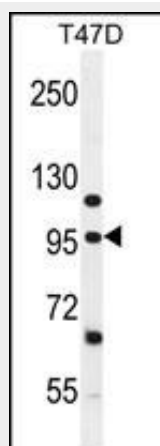
Provided below are standard protocols that you may find useful for product applications.

- [Western Blot](#)
- [Blocking Peptides](#)
- [Dot Blot](#)
- [Immunohistochemistry](#)
- [Immunofluorescence](#)
- [Immunoprecipitation](#)
- [Flow Cytometry](#)
- [Cell Culture](#)

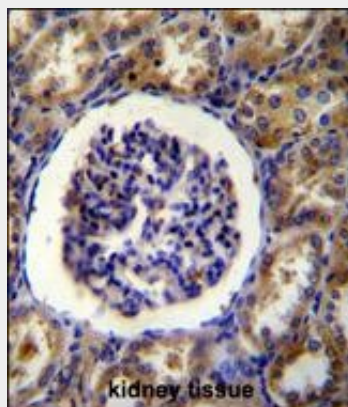
**FAM160B1 Antibody (C-term) - Images**



FAM160B1 Antibody (C-term) (Cat. #AP11364b) western blot analysis in mouse cerebellum tissue lysates (35ug/lane). This demonstrates the FAM160B1 antibody detected the FAM160B1 protein (arrow).



FAM160B1 Antibody (C-term) (Cat. #AP11364b) western blot analysis in T47D cell line lysates (35ug/lane). This demonstrates the FAM160B1 antibody detected the FAM160B1 protein (arrow).



FAM160B1 Antibody (C-term) (Cat. #AP11364b) immunohistochemistry analysis in formalin fixed and paraffin embedded human kidney tissue followed by peroxidase conjugation of the secondary antibody and DAB staining. This data demonstrates the use of FAM160B1 Antibody (C-term) for immunohistochemistry. Clinical relevance has not been evaluated.

#### **FAM160B1 Antibody (C-term) - Citations**

- [A susceptibility locus rs7099208 is associated with non-obstructive azoospermia via reduction in the expression of FAM160B1.](#)