

**CCDC84 Antibody (N-term)**  
**Affinity Purified Rabbit Polyclonal Antibody (Pab)**  
**Catalog # AP11365a****Specification**

---

**CCDC84 Antibody (N-term) - Product Information**

Application	WB, IHC-P,E
Primary Accession	<a href="#">Q86UT8</a>
Other Accession	<a href="#">NP_940891.1</a>
Reactivity	Mouse
Host	Rabbit
Clonality	Polyclonal
Isotype	Rabbit IgG
Calculated MW	37974
Antigen Region	34-62

**CCDC84 Antibody (N-term) - Additional Information****Gene ID** 338657**Other Names**

Coiled-coil domain-containing protein 84, CCDC84

**Target/Specificity**

This CCDC84 antibody is generated from rabbits immunized with a KLH conjugated synthetic peptide between 34-62 amino acids from the N-terminal region of human CCDC84.

**Dilution**

WB~~1:1000

IHC-P~~1:50~100

E~~Use at an assay dependent concentration.

**Format**

Purified polyclonal antibody supplied in PBS with 0.09% (W/V) sodium azide. This antibody is purified through a protein A column, followed by peptide affinity purification.

**Storage**

Maintain refrigerated at 2-8°C for up to 2 weeks. For long term storage store at -20°C in small aliquots to prevent freeze-thaw cycles.

**Precautions**

CCDC84 Antibody (N-term) is for research use only and not for use in diagnostic or therapeutic procedures.

**CCDC84 Antibody (N-term) - Protein Information****Name** CENATAC ([HGNC:30460](#))

**Function** Component of the minor spliceosome that promotes splicing of a specific, rare minor intron subtype (PubMed:[34009673](#)). Negative regulator of centrosome duplication (PubMed:[31722219](#)). Constrains centriole number by modulating the degradation of the centrosome- duplication-associated protein SASS6 in an acetylation-dependent manner. SIRT1 deacetylates CENATAC in G1 phase, allowing for SASS6 accumulation on the centrosome and subsequent procentriole assembly. The CENATAC acetylation level is restored in mitosis by NAT10, promoting SASS6 proteasome degradation by facilitating SASS6 binding to APC/C E3 ubiquitin-protein ligase complex/FZR1 (PubMed:[31722219](#)).

#### Cellular Location

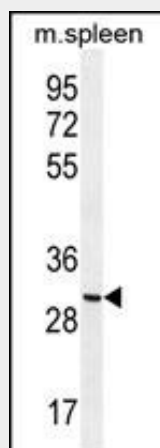
Cytoplasm, cytoskeleton, microtubule organizing center, centrosome. Note=Localizes to the proximal end of the mother centriole. During the cell cycle, from G1 to metaphase, gradually accumulates on the centrosome and then decreased significantly upon entry into anaphase.

#### CCDC84 Antibody (N-term) - Protocols

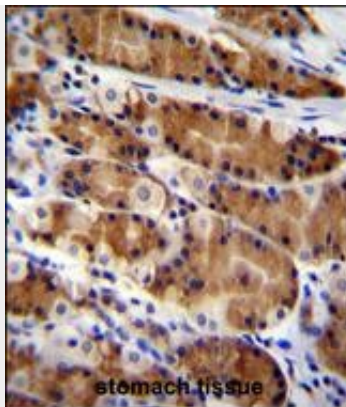
Provided below are standard protocols that you may find useful for product applications.

- [Western Blot](#)
- [Blocking Peptides](#)
- [Dot Blot](#)
- [Immunohistochemistry](#)
- [Immunofluorescence](#)
- [Immunoprecipitation](#)
- [Flow Cytometry](#)
- [Cell Culture](#)

#### CCDC84 Antibody (N-term) - Images



CCDC84 Antibody (N-term) (Cat. #AP11365a) western blot analysis in mouse spleen tissue lysates (35ug/lane). This demonstrates the CCDC84 antibody detected the CCDC84 protein (arrow).



CCDC84 Antibody (N-term) (Cat. #AP11365a) immunohistochemistry analysis in formalin fixed and paraffin embedded human stomach tissue followed by peroxidase conjugation of the secondary antibody and DAB staining. This data demonstrates the use of CCDC84 Antibody (N-term) for immunohistochemistry. Clinical relevance has not been evaluated.

#### **CCDC84 Antibody (N-term) - References**

Gerhard, D.S., et al. Genome Res. 14 (10B), 2121-2127 (2004) :