

PNLDC1 Antibody (C-term)
Affinity Purified Rabbit Polyclonal Antibody (Pab)
Catalog # AP11385b

Specification

PNLDC1 Antibody (C-term) - Product Information

| | |
|-------------------|-----------------------------|
| Application | WB, IHC-P, FC,E |
| Primary Accession | Q8NA58 |
| Other Accession | NP_775787.1 |
| Reactivity | Human |
| Host | Rabbit |
| Clonality | Polyclonal |
| Isotype | Rabbit IgG |
| Calculated MW | 60124 |
| Antigen Region | 449-478 |

PNLDC1 Antibody (C-term) - Additional Information

Gene ID 154197

Other Names

Poly(A)-specific ribonuclease PARN-like domain-containing protein 1, PNLDC1

Target/Specificity

This PNLDC1 antibody is generated from rabbits immunized with a KLH conjugated synthetic peptide between 449-478 amino acids from the C-terminal region of human PNLDC1.

Dilution

WB~~1:1000
IHC-P~~1:10~50
FC~~1:10~50
E~~Use at an assay dependent concentration.

Format

Purified polyclonal antibody supplied in PBS with 0.09% (W/V) sodium azide. This antibody is purified through a protein A column, followed by peptide affinity purification.

Storage

Maintain refrigerated at 2-8°C for up to 2 weeks. For long term storage store at -20°C in small aliquots to prevent freeze-thaw cycles.

Precautions

PNLDC1 Antibody (C-term) is for research use only and not for use in diagnostic or therapeutic procedures.

PNLDC1 Antibody (C-term) - Protein Information

Name PNLDC1 ([HGNC:21185](#))

Function 3'-exoribonuclease that has a preference for poly(A) tails of mRNAs, thereby efficiently degrading poly(A) tails (PubMed:[27515512](#)). Exonucleolytic degradation of the poly(A) tail is often the first step in the decay of eukaryotic mRNAs and is also used to silence certain maternal mRNAs translationally during oocyte maturation and early embryonic development (PubMed:[27515512](#)). May act as a regulator of multipotency in embryonic stem cells (By similarity). Is a critical factor for proper spermatogenesis, involved in pre-piRNAs processing to generate mature piRNAs (PubMed:[34347949](#)).

Cellular Location

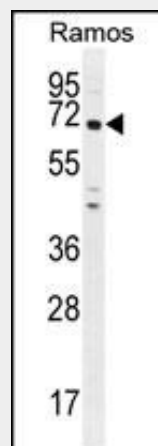
Endoplasmic reticulum membrane; Single-pass membrane protein. Note=Localizes mainly in the endoplasmic reticulum (PubMed:27515512).

PNLDC1 Antibody (C-term) - Protocols

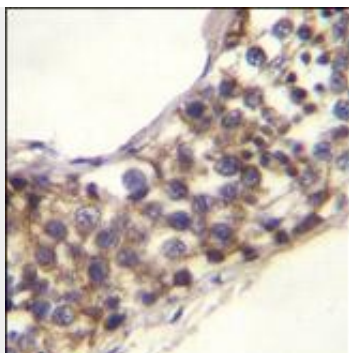
Provided below are standard protocols that you may find useful for product applications.

- [Western Blot](#)
- [Blocking Peptides](#)
- [Dot Blot](#)
- [Immunohistochemistry](#)
- [Immunofluorescence](#)
- [Immunoprecipitation](#)
- [Flow Cytometry](#)
- [Cell Culture](#)

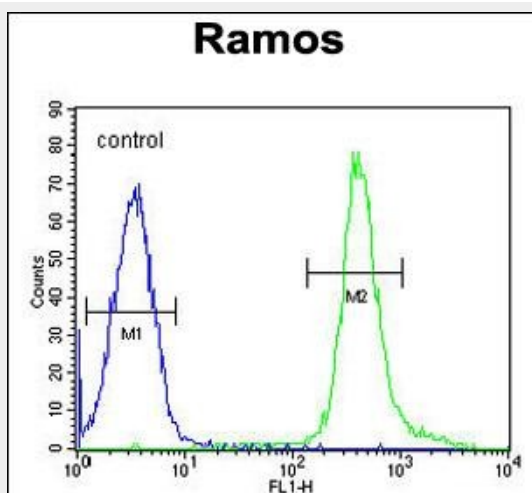
PNLDC1 Antibody (C-term) - Images



PNLDC1 Antibody (C-term) (Cat. #AP11385b) western blot analysis in Ramos cell line lysates (35ug/lane). This demonstrates the PNLDC1 antibody detected the PNLDC1 protein (arrow).



PNLDC1 Antibody (C-term) (Cat. #AP11385b) immunohistochemistry analysis in formalin fixed and paraffin embedded human testis tissue followed by peroxidase conjugation of the secondary antibody and DAB staining. This data demonstrates the use of PNLDC1 Antibody (C-term) for immunohistochemistry. Clinical relevance has not been evaluated.



PNLDC1 Antibody (C-term) (Cat. #AP11385b) flow cytometric analysis of Ramos cells (right histogram) compared to a negative control cell (left histogram). FITC-conjugated goat-anti-rabbit secondary antibodies were used for the analysis.

PNLDC1 Antibody (C-term) - References

- Yoshida, T., et al. Int. J. Mol. Med. 25(4):649-656(2010)
- Oguri, M., et al. Am. J. Hypertens. 23(1):70-77(2010)
- Yoshida, T., et al. Int. J. Mol. Med. 24(4):539-547(2009)