

MGC24975 Antibody (C-term)
Affinity Purified Rabbit Polyclonal Antibody (Pab)
Catalog # AP11386B

Specification

MGC24975 Antibody (C-term) - Product Information

Application	WB, IHC-P, FC,E
Primary Accession	Q8IZ63
Other Accession	NP_001127788.1
Reactivity	Human
Host	Rabbit
Clonality	Polyclonal
Isotype	Rabbit IgG
Calculated MW	43980
Antigen Region	368-397

MGC24975 Antibody (C-term) - Additional Information

Gene ID 163154

Other Names

Proline-rich protein 22, PRR22

Target/Specificity

This MGC24975 antibody is generated from rabbits immunized with a KLH conjugated synthetic peptide between 368-397 amino acids from the C-terminal region of human MGC24975.

Dilution

WB~~1:1000

IHC-P~~1:50~100

FC~~1:10~50

E~~Use at an assay dependent concentration.

Format

Purified polyclonal antibody supplied in PBS with 0.09% (W/V) sodium azide. This antibody is purified through a protein A column, followed by peptide affinity purification.

Storage

Maintain refrigerated at 2-8°C for up to 2 weeks. For long term storage store at -20°C in small aliquots to prevent freeze-thaw cycles.

Precautions

MGC24975 Antibody (C-term) is for research use only and not for use in diagnostic or therapeutic procedures.

MGC24975 Antibody (C-term) - Protein Information

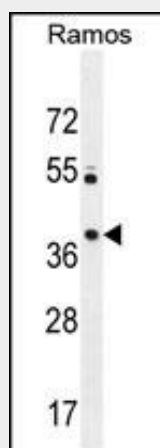
Name PRR22

MGC24975 Antibody (C-term) - Protocols

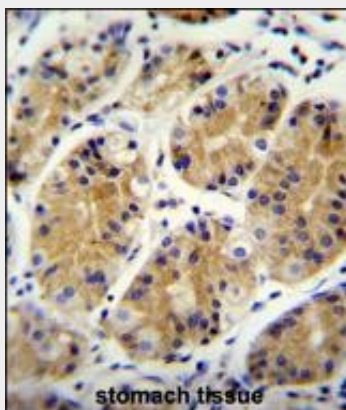
Provided below are standard protocols that you may find useful for product applications.

- [Western Blot](#)
- [Blocking Peptides](#)
- [Dot Blot](#)
- [Immunohistochemistry](#)
- [Immunofluorescence](#)
- [Immunoprecipitation](#)
- [Flow Cytometry](#)
- [Cell Culture](#)

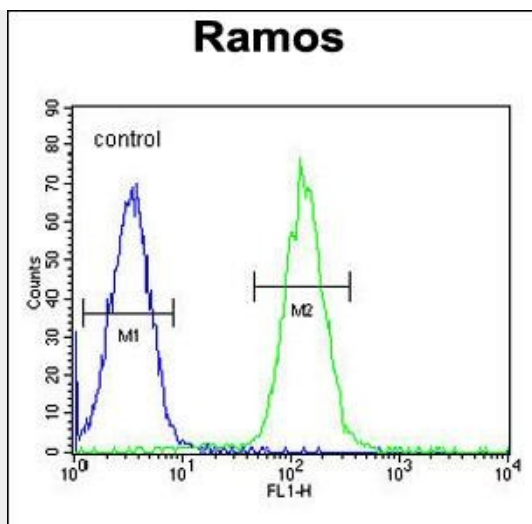
MGC24975 Antibody (C-term) - Images



MGC24975 Antibody (C-term) (Cat. #AP11386b) western blot analysis in Ramos cell line lysates (35ug/lane). This demonstrates the MGC24975 antibody detected the MGC24975 protein (arrow).



MGC24975 Antibody (C-term) (Cat. #AP11386b) immunohistochemistry analysis in formalin fixed and paraffin embedded human stomach tissue followed by peroxidase conjugation of the secondary antibody and DAB staining. This data demonstrates the use of MGC24975 Antibody (C-term) for immunohistochemistry. Clinical relevance has not been evaluated.



MGC24975 Antibody (C-term) (Cat. #AP11386b) flow cytometric analysis of Ramos cells (right histogram) compared to a negative control cell (left histogram). FITC-conjugated goat-anti-rabbit secondary antibodies were used for the analysis.