

PATL2 Antibody (Center)
Affinity Purified Rabbit Polyclonal Antibody (Pab)
Catalog # AP11391c

Specification

PATL2 Antibody (Center) - Product Information

Application	WB, IHC-P, IF,E
Primary Accession	C9JE40
Other Accession	NP_001138584.1
Reactivity	Human
Host	Rabbit
Clonality	Polyclonal
Isotype	Rabbit IgG
Calculated MW	61464
Antigen Region	168-196

PATL2 Antibody (Center) - Additional Information

Gene ID 197135

Other Names

Protein PAT1 homolog 2, PAT1-like protein 2, Protein PAT1 homolog a, Pat1a, hPat1a, PATL2

Target/Specificity

This PATL2 antibody is generated from rabbits immunized with a KLH conjugated synthetic peptide between 168-196 amino acids from the Central region of human PATL2.

Dilution

WB~~1:1000
IHC-P~~1:10~50
IF~~1:10~50
E~~Use at an assay dependent concentration.

Format

Purified polyclonal antibody supplied in PBS with 0.09% (W/V) sodium azide. This antibody is purified through a protein A column, followed by peptide affinity purification.

Storage

Maintain refrigerated at 2-8°C for up to 2 weeks. For long term storage store at -20°C in small aliquots to prevent freeze-thaw cycles.

Precautions

PATL2 Antibody (Center) is for research use only and not for use in diagnostic or therapeutic procedures.

PATL2 Antibody (Center) - Protein Information

Name PATL2

Function RNA-binding protein that acts as a translational repressor.

Cellular Location

Cytoplasm. Nucleus {ECO:0000250|UniProtKB:A2ARM1}

Tissue Location

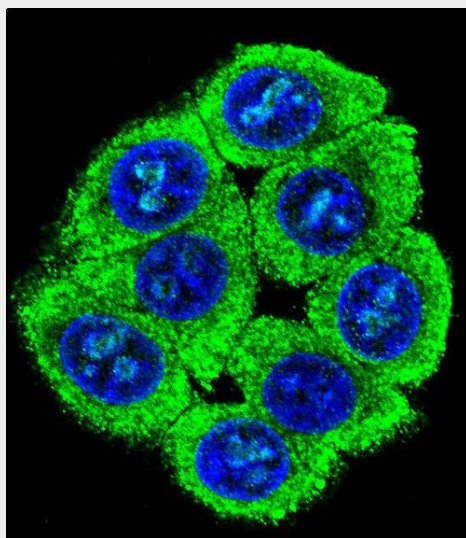
Highly expressed in oocytes.

PATL2 Antibody (Center) - Protocols

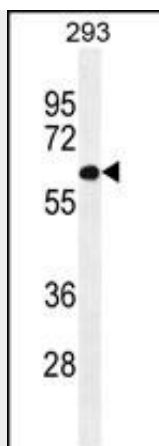
Provided below are standard protocols that you may find useful for product applications.

- [Western Blot](#)
- [Blocking Peptides](#)
- [Dot Blot](#)
- [Immunohistochemistry](#)
- [Immunofluorescence](#)
- [Immunoprecipitation](#)
- [Flow Cytometry](#)
- [Cell Culture](#)

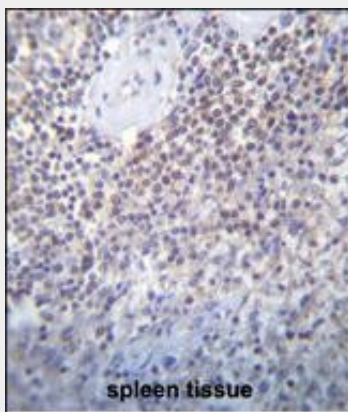
PATL2 Antibody (Center) - Images



Confocal immunofluorescent analysis of PATL2 Antibody (Center)(Cat#AP11391c) with 293 cell followed by Alexa Fluor 488-conjugated goat anti-rabbit IgG (green). DAPI was used to stain the cell nuclear (blue).



PATL2 Antibody (Center) (Cat. #AP11391c) western blot analysis in 293 cell line lysates (35ug/lane). This demonstrates the PATL2 antibody detected the PATL2 protein (arrow).



PATL2 Antibody (Center) (Cat. #AP11391c) immunohistochemistry analysis in formalin fixed and paraffin embedded human spleen tissue followed by peroxidase conjugation of the secondary antibody and DAB staining. This data demonstrates the use of PATL2 Antibody (Center) for immunohistochemistry. Clinical relevance has not been evaluated.

PATL2 Antibody (Center) - References

Scheller, N., et al. Biochim. Biophys. Acta 1773(12):1786-1792(2007)