

TMEM150B Antibody (N-term)
Affinity Purified Rabbit Polyclonal Antibody (Pab)
Catalog # AP11399a**Specification**

TMEM150B Antibody (N-term) - Product Information

Application	WB, IHC-P, IF,E
Primary Accession	A6NC51
Other Accession	NP_001078957.1
Reactivity	Human
Host	Rabbit
Clonality	Polyclonal
Isotype	Rabbit IgG
Calculated MW	25701
Antigen Region	13-41

TMEM150B Antibody (N-term) - Additional Information**Gene ID** 284417**Other Names**

Transmembrane protein 150B, Transmembrane protein 224, TMEM150B, TMEM224

Target/Specificity

This TMEM150B antibody is generated from rabbits immunized with a KLH conjugated synthetic peptide between 13-41 amino acids from the N-terminal region of human TMEM150B.

Dilution

WB~~1:1000

IHC-P~~1:10~50

IF~~1:10~50

E~~Use at an assay dependent concentration.

Format

Purified polyclonal antibody supplied in PBS with 0.09% (W/V) sodium azide. This antibody is prepared by Saturated Ammonium Sulfate (SAS) precipitation followed by dialysis against PBS.

Storage

Maintain refrigerated at 2-8°C for up to 2 weeks. For long term storage store at -20°C in small aliquots to prevent freeze-thaw cycles.

Precautions

TMEM150B Antibody (N-term) is for research use only and not for use in diagnostic or therapeutic procedures.

TMEM150B Antibody (N-term) - Protein Information**Name** TMEM150B ([HGNC:34415](#))

Function Modulator of macroautophagy that causes accumulation of autophagosomes under basal conditions and enhances autophagic flux (PubMed:[25929859](#)). Represses cell death and promotes long-term clonogenic survival of cells grown in the absence of glucose in a macroautophagy-independent manner (PubMed:[25929859](#)). May have some role in extracellular matrix engulfment or growth factor receptor recycling, both of which can modulate cell survival (PubMed:[25929859](#)).

Cellular Location

Cell membrane; Multi-pass membrane protein. Endosome membrane; Multi-pass membrane protein. Cytoplasmic vesicle, autophagosome membrane; Multi-pass membrane protein. Note=Localizes mainly at the plasma membrane where it concentrates at actin-rich focal adhesions (PubMed:25608530, PubMed:25929859).

Tissue Location

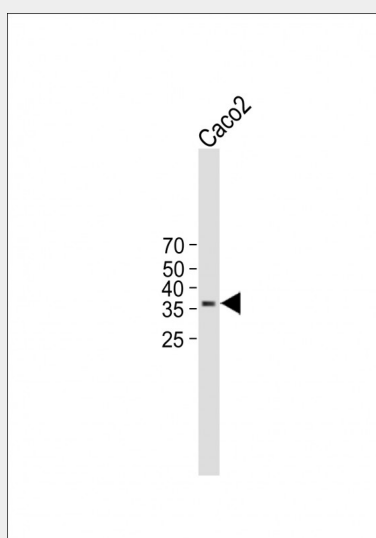
Highly expressed in the colon and lung with comparatively high levels also detectable in the lymph nodes, placenta, duodenum, peripheral blood mononuclear cells and spleen (PubMed:25929859).

TMEM150B Antibody (N-term) - Protocols

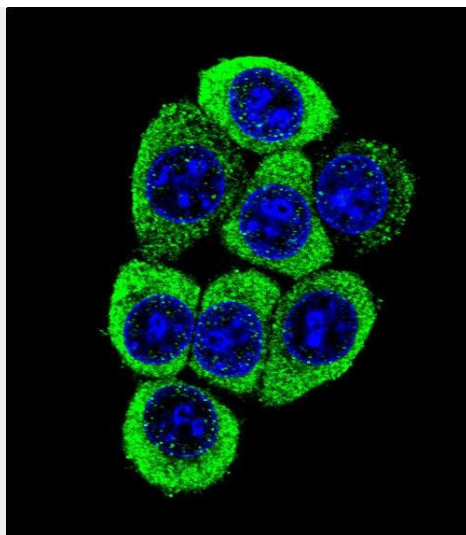
Provided below are standard protocols that you may find useful for product applications.

- [Western Blot](#)
- [Blocking Peptides](#)
- [Dot Blot](#)
- [Immunohistochemistry](#)
- [Immunofluorescence](#)
- [Immunoprecipitation](#)
- [Flow Cytometry](#)
- [Cell Culture](#)

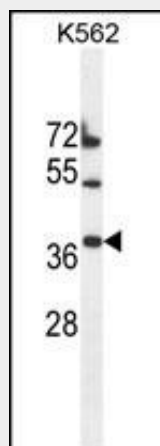
TMEM150B Antibody (N-term) - Images



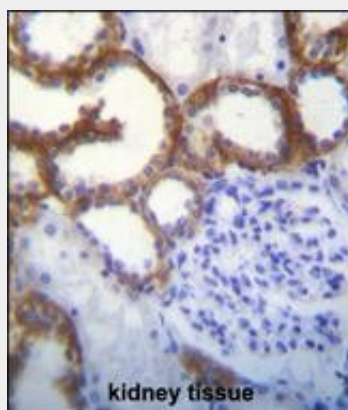
All lanes : Anti-TMEM150B Antibody (N-term) at 1:1000 dilution Lane 1 : Caco2 whole cell lysate Lysates/proteins at 20 µg per lane. Secondary Goat Anti-Rabbit IgG, (H+L), Peroxidase conjugated (ASP1615) at 1/15000 dilution. Observed band size : 36kDa Blocking/Dilution buffer : 5% NFDM/TBST.



Confocal immunofluorescent analysis of TMEM150B Antibody (N-term)(Cat#AP11399a) with 293 cell followed by Alexa Fluor 488-conjugated goat anti-rabbit IgG (green). DAPI was used to stain the cell nuclear (blue).



TMEM150B Antibody (N-term) (Cat. #AP11399a) western blot analysis in K562 cell line lysates (35ug/lane). This demonstrates the TMEM150B antibody detected the TMEM150B protein (arrow).



TMEM150B Antibody (N-term) (Cat. #AP11399a) immunohistochemistry analysis in formalin fixed and paraffin embedded human kidney tissue followed by peroxidase conjugation of the secondary antibody and DAB staining. This data demonstrates the use of TMEM150B Antibody (N-term) for immunohistochemistry. Clinical relevance has not been evaluated.

TMEM150B Antibody (N-term) - References

Stolk, L., et al. Nat. Genet. (2009) In press :
Grimwood, J., et al. Nature 428(6982):529-535(2004)