

ZNF322B Antibody (C-term)
Affinity Purified Rabbit Polyclonal Antibody (Pab)
Catalog # AP11403a**Specification**

ZNF322B Antibody (C-term) - Product Information

Application	WB,E
Primary Accession	Q6U7Q0
Other Accession	Q4R7X8 , Q5SYY0 , NP_945356.1
Reactivity	Human
Predicted	Monkey
Host	Rabbit
Clonality	Polyclonal
Isotype	Rabbit IgG
Calculated MW	46941
Antigen Region	326-354

ZNF322B Antibody (C-term) - Additional Information**Gene ID** 79692**Other Names**

Zinc finger protein 322, Zinc finger protein 322A, Zinc finger protein 388, Zinc finger protein 489, ZNF322, ZNF322A, ZNF388, ZNF489

Target/Specificity

This ZNF322B antibody is generated from rabbits immunized with a KLH conjugated synthetic peptide between 326-354 amino acids from the C-terminal region of human ZNF322B.

Dilution

WB~~1:1000

E~~Use at an assay dependent concentration.

Format

Purified polyclonal antibody supplied in PBS with 0.09% (W/V) sodium azide. This antibody is purified through a protein A column, followed by peptide affinity purification.

Storage

Maintain refrigerated at 2-8°C for up to 2 weeks. For long term storage store at -20°C in small aliquots to prevent freeze-thaw cycles.

Precautions

ZNF322B Antibody (C-term) is for research use only and not for use in diagnostic or therapeutic procedures.

ZNF322B Antibody (C-term) - Protein Information**Name** ZNF322

Synonyms ZNF322A, ZNF388, ZNF489

Function Transcriptional activator (PubMed:[15555580](#)). Important for maintenance of pluripotency in embryonic stem cells (By similarity). Binds directly to the POU5F1 distal enhancer and the NANOG proximal promoter, and enhances expression of both genes (By similarity). Can also bind to numerous other gene promoters and regulates expression of many other pluripotency factors, either directly or indirectly (By similarity). Promotes inhibition of MAPK signaling during embryonic stem cell differentiation (By similarity).

Cellular Location

Cytoplasm. Nucleus. Note=Mainly found in the nucleus

Tissue Location

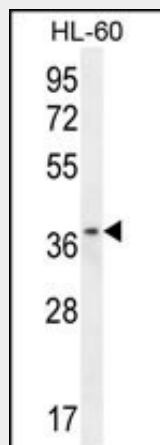
Ubiquitous. Highly expressed in heart and skeletal muscle.

ZNF322B Antibody (C-term) - Protocols

Provided below are standard protocols that you may find useful for product applications.

- [Western Blot](#)
- [Blocking Peptides](#)
- [Dot Blot](#)
- [Immunohistochemistry](#)
- [Immunofluorescence](#)
- [Immunoprecipitation](#)
- [Flow Cytometry](#)
- [Cell Culture](#)

ZNF322B Antibody (C-term) - Images



ZNF322B Antibody (C-term) (Cat. #AP11403a) western blot analysis in HL-60 cell line lysates (35ug/lane). This demonstrates the ZNF322B antibody detected the ZNF322B protein (arrow).

ZNF322B Antibody (C-term) - Background

May be involved in transcriptional regulation (By similarity).

ZNF322B Antibody (C-term) - References

Humphray, S.J., et al. Nature 429(6990):369-374(2004)