

**PTCHD3 Antibody (C-term)**  
**Affinity Purified Rabbit Polyclonal Antibody (Pab)**  
**Catalog # AP11409b****Specification**

---

**PTCHD3 Antibody (C-term) - Product Information**

|                   |                                |
|-------------------|--------------------------------|
| Application       | WB, IHC-P,E                    |
| Primary Accession | <a href="#">Q3KNS1</a>         |
| Other Accession   | <a href="#">NP_001030014.2</a> |
| Reactivity        | Human                          |
| Host              | Rabbit                         |
| Clonality         | Polyclonal                     |
| Isotype           | Rabbit IgG                     |
| Calculated MW     | 107689                         |
| Antigen Region    | 689-717                        |

**PTCHD3 Antibody (C-term) - Additional Information****Gene ID** 374308**Other Names**

Patched domain-containing protein 3, Patched-related protein, PTCHD3, PTR

**Target/Specificity**

This PTCHD3 antibody is generated from rabbits immunized with a KLH conjugated synthetic peptide between 689-717 amino acids from the C-terminal region of human PTCHD3.

**Dilution**

WB~~1:1000

IHC-P~~1:10~50

**Format**

Purified polyclonal antibody supplied in PBS with 0.09% (W/V) sodium azide. This antibody is purified through a protein A column, followed by peptide affinity purification.

**Storage**

Maintain refrigerated at 2-8°C for up to 2 weeks. For long term storage store at -20°C in small aliquots to prevent freeze-thaw cycles.

**Precautions**

PTCHD3 Antibody (C-term) is for research use only and not for use in diagnostic or therapeutic procedures.

**PTCHD3 Antibody (C-term) - Protein Information****Name** PTCHD3**Synonyms** PTR

**Function** May play a role in sperm development or sperm function (PubMed:[17904097](#)). However, does not appear to have an essential role in spermatogenesis or male fertility (PubMed:[21439084](#)).

#### Cellular Location

Cell projection, cilium, flagellum membrane; Multi-pass membrane protein. Endoplasmic reticulum membrane; Multi-pass membrane protein. Note=Localizes to the midpiece of the sperm tail

#### Tissue Location

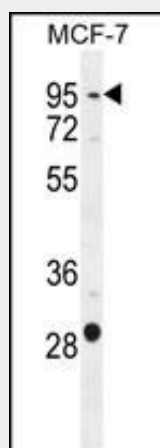
Expressed in germ cells of the testis (at protein level) (PubMed:17904097). Detected in blood lymph, colon, small intestine, ovary, testis, prostate, thymus and spleen with highest levels in testis (PubMed:21439084).

### PTCHD3 Antibody (C-term) - Protocols

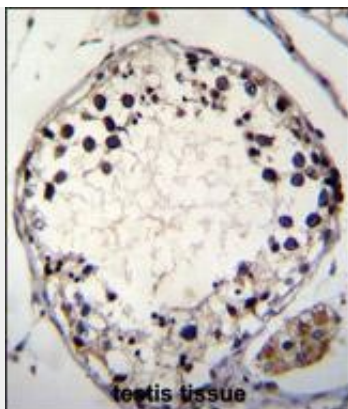
Provided below are standard protocols that you may find useful for product applications.

- [Western Blot](#)
- [Blocking Peptides](#)
- [Dot Blot](#)
- [Immunohistochemistry](#)
- [Immunofluorescence](#)
- [Immunoprecipitation](#)
- [Flow Cytometry](#)
- [Cell Culture](#)

### PTCHD3 Antibody (C-term) - Images



PTCHD3 Antibody (C-term) (Cat. #AP11409b) western blot analysis in MCF-7 cell line lysates (35ug/lane). This demonstrates the PTCHD3 antibody detected the PTCHD3 protein (arrow).



PTCHD3 Antibody (C-term) (Cat. #AP11409b) immunohistochemistry analysis in formalin fixed and paraffin embedded human testis tissue followed by peroxidase conjugation of the secondary antibody and DAB staining. This data demonstrates the use of PTCHD3 Antibody (C-term) for immunohistochemistry. Clinical relevance has not been evaluated.

#### **PTCHD3 Antibody (C-term) - Background**

May play a role in sperm development or sperm function.

#### **PTCHD3 Antibody (C-term) - References**

Fan, J., et al. Biochem. Biophys. Res. Commun. 363(3):757-761(2007)