

GAS2L2 Antibody (C-term)
Affinity Purified Rabbit Polyclonal Antibody (Pab)
Catalog # AP11417b**Specification**

GAS2L2 Antibody (C-term) - Product Information

Application	WB, IHC-P,E
Primary Accession	Q8NHY3
Other Accession	NP_644814.1
Reactivity	Human
Host	Rabbit
Clonality	Polyclonal
Isotype	Rabbit IgG
Antigen Region	763-791

GAS2L2 Antibody (C-term) - Additional Information**Gene ID** 246176**Other Names**

GAS2-like protein 2, GAS2-related protein on chromosome 17, Growth arrest-specific protein 2-like 2, GAS2L2, GAR17

Target/Specificity

This GAS2L2 antibody is generated from rabbits immunized with a KLH conjugated synthetic peptide between 763-791 amino acids from the C-terminal region of human GAS2L2.

Dilution

WB~~1:1000

IHC-P~~1:10~50

E~~Use at an assay dependent concentration.

Format

Purified polyclonal antibody supplied in PBS with 0.09% (W/V) sodium azide. This antibody is purified through a protein A column, followed by peptide affinity purification.

Storage

Maintain refrigerated at 2-8°C for up to 2 weeks. For long term storage store at -20°C in small aliquots to prevent freeze-thaw cycles.

Precautions

GAS2L2 Antibody (C-term) is for research use only and not for use in diagnostic or therapeutic procedures.

GAS2L2 Antibody (C-term) - Protein Information**Name** GAS2L2

Synonyms GAR17

Function Involved in the cross-linking of microtubules and microfilaments (PubMed:[12584248](#), PubMed:[24706950](#)). Regulates microtubule dynamics and stability by interacting with microtubule plus-end tracking proteins, such as MAPRE1, to regulate microtubule growth along actin stress fibers (PubMed:[24706950](#)). Enhances ADORA2- mediated adenylyl cyclase activation by acting as a scaffold to recruit trimeric G-protein complexes to ADORA2A (By similarity). Regulates ciliary orientation and performance in cells located in the airway (PubMed:[30665704](#)).

Cellular Location

Cytoplasm, cytoskeleton. Cell membrane {ECO:0000250|UniProtKB:Q5SSG4}. Cytoplasm, cytoskeleton, stress fiber. Cytoplasm, cytoskeleton, cilium basal body. Note=Colocalizes with ADORA2A at neuronal processes (By similarity). Colocalizes with and tracks the tips of microtubule plus ends (PubMed:24706950) {ECO:0000250|UniProtKB:D3ZUE1, ECO:0000269|PubMed:24706950}

Tissue Location

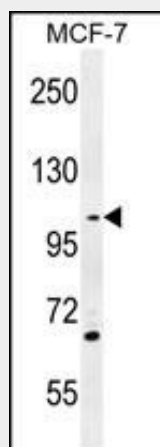
Expressed in bronchial and nasal epithelial cells (at protein level) (PubMed:30665704). Expressed in brain, kidney, lung, testis, fallopian tubes, and skeletal muscle (PubMed:12584248, PubMed:30665704). Expressed at low levels in stomach and colon (PubMed:30665704).

GAS2L2 Antibody (C-term) - Protocols

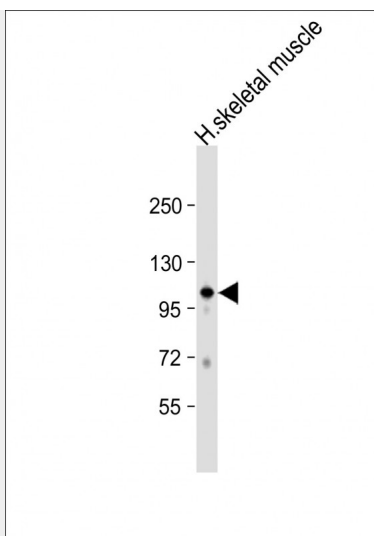
Provided below are standard protocols that you may find useful for product applications.

- [Western Blot](#)
- [Blocking Peptides](#)
- [Dot Blot](#)
- [Immunohistochemistry](#)
- [Immunofluorescence](#)
- [Immunoprecipitation](#)
- [Flow Cytometry](#)
- [Cell Culture](#)

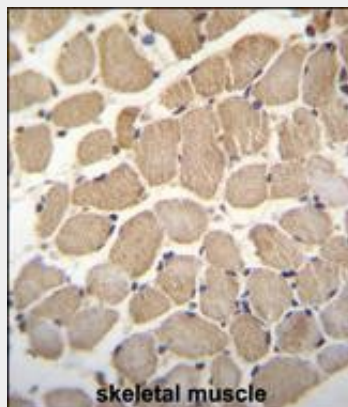
GAS2L2 Antibody (C-term) - Images



GAS2L2 Antibody (C-term) (Cat. #AP11417b) western blot analysis in MCF-7 cell line lysates (35ug/lane). This demonstrates the GAS2L2 antibody detected the GAS2L2 protein (arrow).



Anti-GAS2L2 Antibody (C-term) at 1:1000 dilution + human skeletal muscle lysate
Lysates/proteins at 20 µg per lane. Secondary Goat Anti-Rabbit IgG, (H+L), Peroxidase conjugated
at 1/10000 dilution. Predicted band size : 97 kDa Blocking/Dilution buffer: 5% NFDM/TBST.



GAS2L2 Antibody (C-term) (Cat. #AP11417b) immunohistochemistry analysis in formalin fixed and paraffin embedded human skeletal muscle followed by peroxidase conjugation of the secondary antibody and DAB staining. This data demonstrates the use of GAS2L2 Antibody (C-term) for immunohistochemistry. Clinical relevance has not been evaluated.

GAS2L2 Antibody (C-term) - Background

Seems to be involved in the cross-linking of microtubules and microfilaments.

GAS2L2 Antibody (C-term) - References

Goriounov, D., et al. J. Cell. Sci. 116 (PT 6), 1045-1058 (2003) :