

**GTF2H2C Antibody (C-term)**  
**Affinity Purified Rabbit Polyclonal Antibody (Pab)**  
**Catalog # AP11425b****Specification**

---

**GTF2H2C Antibody (C-term) - Product Information**

Application	WB, IHC-P, IF,E
Primary Accession	<a href="#">Q6P1K8</a>
Other Accession	<a href="#">Q13888</a> , <a href="#">NP_001092198.1</a> , <a href="#">NP_001035955.1</a>
Reactivity	Human
Host	Rabbit
Clonality	Polyclonal
Isotype	Rabbit IgG
Calculated MW	44452
Antigen Region	314-343

**GTF2H2C Antibody (C-term) - Additional Information****Gene ID** 728340;730394**Other Names**

General transcription factor IIH subunit 2-like protein, General transcription factor IIH polypeptide 2-like protein, GTF2H2C

**Target/Specificity**

This GTF2H2C antibody is generated from rabbits immunized with a KLH conjugated synthetic peptide between 314-343 amino acids from the C-terminal region of human GTF2H2C.

**Dilution**WB~~1:1000  
IHC-P~~1:10~50  
IF~~1:10~50  
E~~Use at an assay dependent concentration.**Format**

Purified polyclonal antibody supplied in PBS with 0.09% (W/V) sodium azide. This antibody is purified through a protein A column, followed by peptide affinity purification.

**Storage**

Maintain refrigerated at 2-8°C for up to 2 weeks. For long term storage store at -20°C in small aliquots to prevent freeze-thaw cycles.

**Precautions**

GTF2H2C Antibody (C-term) is for research use only and not for use in diagnostic or therapeutic procedures.

**GTF2H2C Antibody (C-term) - Protein Information**

**Name** GTF2H2C

**Function** Component of the core-TFIIF basal transcription factor involved in nucleotide excision repair (NER) of DNA and, when complexed to CAK, in RNA transcription by RNA polymerase II.

**Cellular Location**

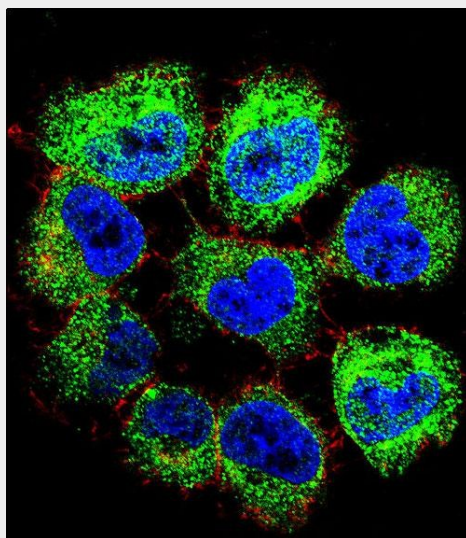
Nucleus.

### **GTF2H2C Antibody (C-term) - Protocols**

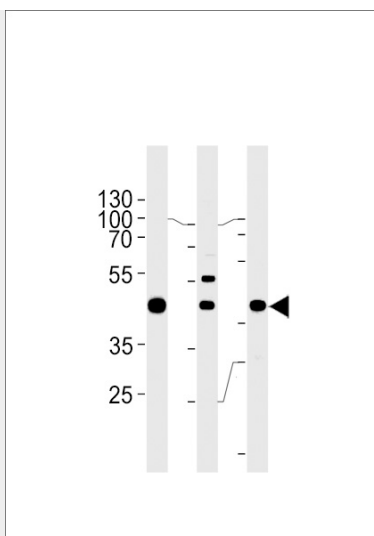
Provided below are standard protocols that you may find useful for product applications.

- [Western Blot](#)
- [Blocking Peptides](#)
- [Dot Blot](#)
- [Immunohistochemistry](#)
- [Immunofluorescence](#)
- [Immunoprecipitation](#)
- [Flow Cytometry](#)
- [Cell Culture](#)

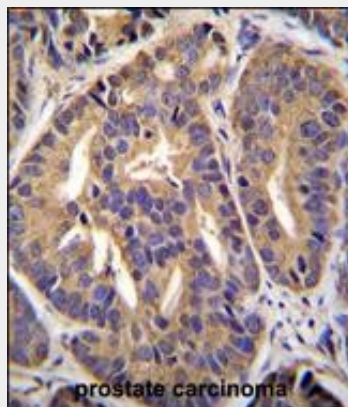
### **GTF2H2C Antibody (C-term) - Images**



Confocal immunofluorescent analysis of GTF2H2C Antibody (C-term)(Cat#AP11425b) with NCI-H460 cell followed by Alexa Fluor 488-conjugated goat anti-rabbit IgG (green). Actin filaments have been labeled with Alexa Fluor 555 phalloidin (red).DAPI was used to stain the cell nuclear (blue).



GTF2H2C Antibody(C-term) (Cat.# AP11425b) western blot analysis in A549,K562,MCF-7 cell line lysates (35ug/lane).This demonstrates the GTF2H2C antibody detected the GTF2H2C protein (arrow).



GTF2H2C Antibody (C-term) (Cat. #AP11425b)immunohistochemistry analysis in formalin fixed and paraffin embedded human prostate carcinoma followed by peroxidase conjugation of the secondary antibody and DAB staining.This data demonstrates the use of GTF2H2C Antibody (C-term) for immunohistochemistry. Clinical relevance has not been evaluated.

#### **GTF2H2C Antibody (C-term) - Background**

Component of the core-TFIIF basal transcription factor involved in nucleotide excision repair (NER) of DNA and, when complexed to CAK, in RNA transcription by RNA polymerase II (By similarity).

#### **GTF2H2C Antibody (C-term) - References**

Schmutz, J., et al. Nature 431(7006):268-274(2004)