

KRBA2 Antibody (Center)
Affinity Purified Rabbit Polyclonal Antibody (Pab)
Catalog # AP11433c**Specification**

KRBA2 Antibody (Center) - Product Information

Application	IF, WB,E
Primary Accession	O6ZNG9
Other Accession	NP_998762.1
Reactivity	Human
Host	Rabbit
Clonality	Polyclonal
Isotype	Rabbit IgG
Antigen Region	157-186

KRBA2 Antibody (Center) - Additional Information**Gene ID** 124751**Other Names**

KRAB-A domain-containing protein 2, KRBA2

Target/Specificity

This KRBA2 antibody is generated from rabbits immunized with a KLH conjugated synthetic peptide between 157-186 amino acids from the Central region of human KRBA2.

Dilution

IF~~1:25

WB~~1:1000

E~~Use at an assay dependent concentration.

Format

Purified polyclonal antibody supplied in PBS with 0.09% (W/V) sodium azide. This antibody is purified through a protein A column, followed by peptide affinity purification.

Storage

Maintain refrigerated at 2-8°C for up to 2 weeks. For long term storage store at -20°C in small aliquots to prevent freeze-thaw cycles.

Precautions

KRBA2 Antibody (Center) is for research use only and not for use in diagnostic or therapeutic procedures.

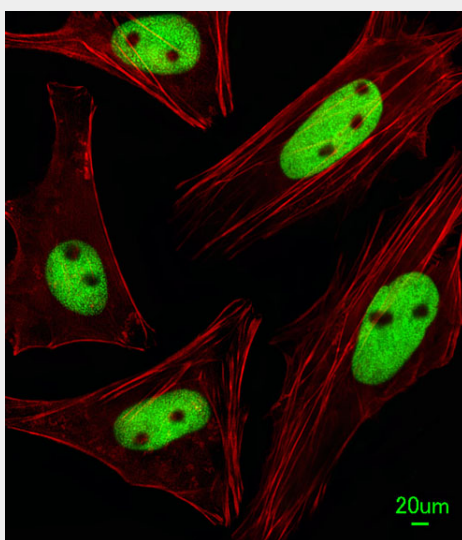
KRBA2 Antibody (Center) - Protein Information**Name** KRBA2

KRBA2 Antibody (Center) - Protocols

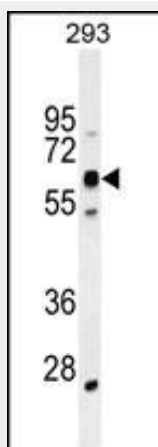
Provided below are standard protocols that you may find useful for product applications.

- [Western Blot](#)
- [Blocking Peptides](#)
- [Dot Blot](#)
- [Immunohistochemistry](#)
- [Immunofluorescence](#)
- [Immunoprecipitation](#)
- [Flow Cytometry](#)
- [Cell Culture](#)

KRBA2 Antibody (Center) - Images



Immunofluorescent analysis of HeLa cells, using KRBA2 Antibody (Center) (Cat. #AP11433c). AP11433c was diluted at 1:25 dilution. Alexa Fluor 488-conjugated goat anti-rabbit IgG at 1:400 dilution was used as the secondary antibody (green). Cytoplasmic actin was counterstained with Dylight Fluor® 554 (red) conjugated Phalloidin (red).



KRBA2 Antibody (Center) (Cat. #AP11433c) western blot analysis in 293 cell line lysates (35ug/lane). This demonstrates the KCat. #A2 antibody detected the KCat. #A2 protein (arrow).

KRBA2 Antibody (Center) - References

Matsuoka, S., et al. Science 316(5828):1160-1166(2007)

Strausberg, R.L., et al. Proc. Natl. Acad. Sci. U.S.A. 99(26):16899-16903(2002)