

CRFR2 Antibody (D35)
Affinity Purified Rabbit Polyclonal Antibody (Pab)
Catalog # AP11442a**Specification**

CRFR2 Antibody (D35) - Product Information

Application	WB, IHC-P, FC,E
Primary Accession	Q13324
Other Accession	NP_001874.2
Reactivity	Human
Host	Rabbit
Clonality	Polyclonal
Isotype	Rabbit IgG
Calculated MW	47688
Antigen Region	10-39

CRFR2 Antibody (D35) - Additional Information**Gene ID** 1395**Other Names**

Corticotropin-releasing factor receptor 2, CRF-R-2, CRF-R2, CRFR-2, Corticotropin-releasing hormone receptor 2, CRH-R-2, CRH-R2, CRHR2, CRF2R, CRH2R

Target/Specificity

This CRFR2 antibody is generated from rabbits immunized with a KLH conjugated synthetic peptide between 10-39 amino acids from human CRFR2.

Dilution

WB~~1:1000

IHC-P~~1:50~100

FC~~1:10~50

E~~Use at an assay dependent concentration.

Format

Purified polyclonal antibody supplied in PBS with 0.09% (W/V) sodium azide. This antibody is purified through a protein A column, followed by peptide affinity purification.

Storage

Maintain refrigerated at 2-8°C for up to 2 weeks. For long term storage store at -20°C in small aliquots to prevent freeze-thaw cycles.

Precautions

CRFR2 Antibody (D35) is for research use only and not for use in diagnostic or therapeutic procedures.

CRFR2 Antibody (D35) - Protein Information

Name CRHR2

Synonyms CRF2R, CRH2R

Function G-protein coupled receptor for CRH (corticotropin-releasing factor), UCN (urocortin), UCN2 and UCN3. Has high affinity for UCN. Ligand binding causes a conformation change that triggers signaling via guanine nucleotide-binding proteins (G proteins) and down-stream effectors, such as adenylate cyclase. Promotes the activation of adenylate cyclase, leading to increased intracellular cAMP levels.

Cellular Location

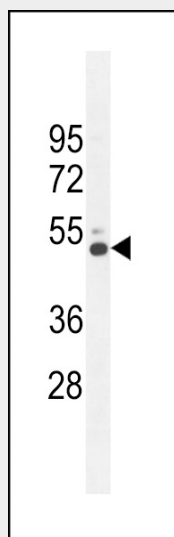
Cell membrane; Multi-pass membrane protein

CRFR2 Antibody (D35) - Protocols

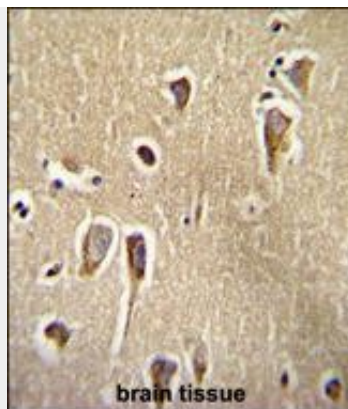
Provided below are standard protocols that you may find useful for product applications.

- [Western Blot](#)
- [Blocking Peptides](#)
- [Dot Blot](#)
- [Immunohistochemistry](#)
- [Immunofluorescence](#)
- [Immunoprecipitation](#)
- [Flow Cytometry](#)
- [Cell Culture](#)

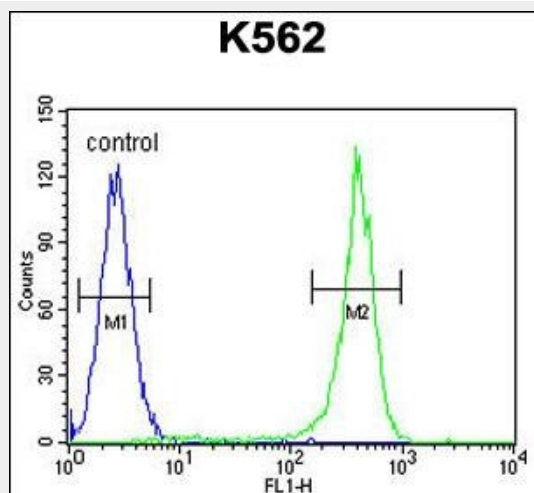
CRFR2 Antibody (D35) - Images



CRFR2 Antibody (D35) (Cat. #AP11442a) western blot analysis in K562 cell line lysates (35ug/lane). This demonstrates the CRFR2 antibody detected the CRFR2 protein (arrow).



CRFR2 Antibody (D35)(Cat. #AP11442a)immunohistochemistry analysis in formalin fixed and paraffin embedded human brain tissue followed by peroxidase conjugation of the secondary antibody and DAB staining.This data demonstrates the use of CRFR2 Antibody (D35) for immunohistochemistry. Clinical relevance has not been evaluated.



CRFR2 Antibody (D35) (Cat. #AP11442a) flow cytometric analysis of K562 cells (right histogram) compared to a negative control cell (left histogram).FITC-conjugated goat-anti-rabbit secondary antibodies were used for the analysis.

CRFR2 Antibody (D35) - Background

Liaw et al. (1996) [PubMed 8536644] stated that there are 2 G protein-coupled corticotropin-releasing hormone (CRH; MIM 122560) receptors, CRHR1 (MIM 122561) and CRHR2, which they termed the CRF2 receptor. CRH is a 41-amino acid peptide synthesized in the hypothalamus that is the principal neuroregulator of the hypothalamic-pituitary-adrenocortical axis and plays an important role in coordinating the endocrine, autonomic, and behavioral responses to stress and immune challenge.

CRFR2 Antibody (D35) - References

Romero, R., et al. Am. J. Obstet. Gynecol. 203 (4), 361 (2010) :
Gutknecht, E., et al. Eur. J. Pharmacol. 642 (1-3), 1-9 (2010) :
Ruano, G., et al. Pharmacogenomics 11(7):959-971(2010)
Pinheiro, A.P., et al. Am. J. Med. Genet. B Neuropsychiatr. Genet. 153B (5), 1070-1080 (2010) :
Joubert, B.R., et al. Genome Med 2 (3), 17 (2010) :