

**SOX3 Antibody (Center)**  
**Affinity Purified Rabbit Polyclonal Antibody (Pab)**  
**Catalog # AP11445c****Specification**

---

**SOX3 Antibody (Center) - Product Information**

Application	WB,E
Primary Accession	<a href="#">P41225</a>
Other Accession	<a href="#">P47792</a> , <a href="#">P53784</a> , <a href="#">Q6EJB7</a> , <a href="#">NP_005625.2</a>
Reactivity	Human
Predicted	Zebrafish, Mouse
Host	Rabbit
Clonality	Polyclonal
Isotype	Rabbit IgG
Calculated MW	45210
Antigen Region	166-196

**SOX3 Antibody (Center) - Additional Information****Gene ID** 6658**Other Names**

Transcription factor SOX-3, SOX3

**Target/Specificity**

This SOX3 antibody is generated from rabbits immunized with a KLH conjugated synthetic peptide between 166-196 amino acids from the Central region of human SOX3.

**Dilution**

WB~~1:1000

**Format**

Purified polyclonal antibody supplied in PBS with 0.09% (W/V) sodium azide. This antibody is purified through a protein A column, followed by peptide affinity purification.

**Storage**

Maintain refrigerated at 2-8°C for up to 2 weeks. For long term storage store at -20°C in small aliquots to prevent freeze-thaw cycles.

**Precautions**

SOX3 Antibody (Center) is for research use only and not for use in diagnostic or therapeutic procedures.

**SOX3 Antibody (Center) - Protein Information****Name** SOX3**Function** Transcription factor required during the formation of the hypothalamo-pituitary axis.

May function as a switch in neuronal development. Keeps neural cells undifferentiated by counteracting the activity of proneural proteins and suppresses neuronal differentiation. Required also within the pharyngeal epithelia for craniofacial morphogenesis. Controls a genetic switch in male development. Is necessary for initiating male sex determination by directing the development of supporting cell precursors (pre-Sertoli cells) as Sertoli rather than granulosa cells (By similarity).

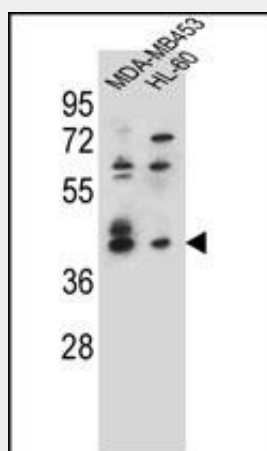
**Cellular Location**

Nucleus.

**SOX3 Antibody (Center) - Protocols**

Provided below are standard protocols that you may find useful for product applications.

- [Western Blot](#)
- [Blocking Peptides](#)
- [Dot Blot](#)
- [Immunohistochemistry](#)
- [Immunofluorescence](#)
- [Immunoprecipitation](#)
- [Flow Cytometry](#)
- [Cell Culture](#)

**SOX3 Antibody (Center) - Images**

SOX3 Antibody (Center) (Cat. #AP11445c) western blot analysis in MDA-MB453,HL-60 cell line lysates (35ug/lane).This demonstrates the SOX3 antibody detected the SOX3 protein (arrow).

**SOX3 Antibody (Center) - Background**

This gene encodes a member of the SOX (SRY-related HMG-box) family of transcription factors involved in the regulation of embryonic development and in the determination of the cell fate. The encoded protein may act as a transcriptional regulator after forming a protein complex with other proteins. Mutations in this gene have been associated with X-linked mental retardation with growth hormone deficiency.

**SOX3 Antibody (Center) - References**

Dateki, S., et al. J. Clin. Endocrinol. Metab. 95(8):4043-4047(2010)  
Sato, Y., et al. Mol. Cell. Biochem. 337 (1-2), 267-275 (2010) :  
Mojsin, M., et al. Biochem. J. 425(1):107-116(2010)  
Bleyl, S.B., et al. Am. J. Med. Genet. A 143A (23), 2785-2795 (2007) :  
Krstic, A., et al. Arch. Biochem. Biophys. 467(2):163-173(2007)