

JHDM2b Antibody (C-term)
Purified Rabbit Polyclonal Antibody (Pab)
Catalog # AP11446b**Specification**

JHDM2b Antibody (C-term) - Product Information

Application	WB, FC,E
Primary Accession	Q7LBC6
Other Accession	Q6ZPY7 , NP_057688.2
Reactivity	Mouse
Host	Rabbit
Clonality	Polyclonal
Isotype	Rabbit IgG
Calculated MW	191581
Antigen Region	1328-1358

JHDM2b Antibody (C-term) - Additional Information**Gene ID** 51780**Other Names**

Lysine-specific demethylase 3B, 11411-, JmjC domain-containing histone demethylation protein 2B, Jumonji domain-containing protein 1B, Nuclear protein 5qNCA, KDM3B, C5orf7, JHDM2B, JMJD1B, KIAA1082

Target/Specificity

This JHDM2b antibody is generated from rabbits immunized with a KLH conjugated synthetic peptide between 1328-1358 amino acids from the C-terminal region of human JHDM2b.

Dilution

WB~~1:1000

FC~~1:10~50

E~~Use at an assay dependent concentration.

Format

Purified polyclonal antibody supplied in PBS with 0.09% (W/V) sodium azide. This antibody is prepared by Saturated Ammonium Sulfate (SAS) precipitation followed by dialysis against PBS.

Storage

Maintain refrigerated at 2-8°C for up to 2 weeks. For long term storage store at -20°C in small aliquots to prevent freeze-thaw cycles.

Precautions

JHDM2b Antibody (C-term) is for research use only and not for use in diagnostic or therapeutic procedures.

JHDM2b Antibody (C-term) - Protein Information

Name KDM3B

Synonyms C5orf7, JHDM2B, JMJD1B, KIAA1082

Function Histone demethylase that specifically demethylates 'Lys-9' of histone H3, thereby playing a central role in histone code. Demethylation of Lys residue generates formaldehyde and succinate. May have tumor suppressor activity.

Cellular Location

Nucleus.

Tissue Location

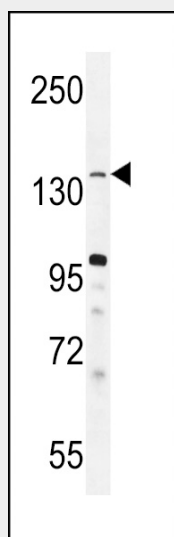
Ubiquitous. Highly expressed in placenta, skeletal muscle, kidney, heart and liver.

JHDM2b Antibody (C-term) - Protocols

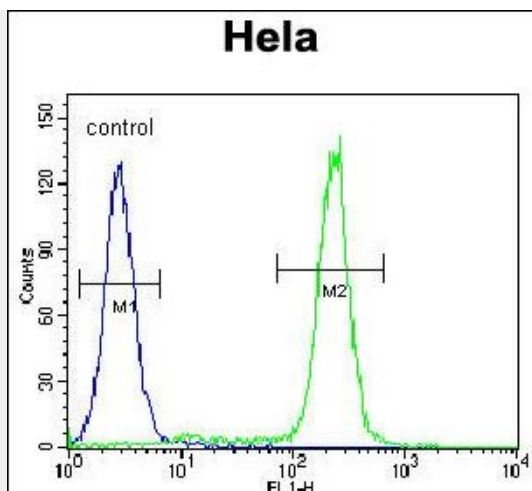
Provided below are standard protocols that you may find useful for product applications.

- [Western Blot](#)
- [Blocking Peptides](#)
- [Dot Blot](#)
- [Immunohistochemistry](#)
- [Immunofluorescence](#)
- [Immunoprecipitation](#)
- [Flow Cytometry](#)
- [Cell Culture](#)

JHDM2b Antibody (C-term) - Images



JHDM2b Antibody (C-term) (Cat. #AP11446b) western blot analysis in mouse heart tissue lysates (35ug/lane). This demonstrates the JHDM2b antibody detected the JHDM2b protein (arrow).



JHDM2b Antibody (C-term) (Cat. #AP11446b) flow cytometric analysis of Hela cells (right histogram) compared to a negative control cell (left histogram). FITC-conjugated goat-anti-rabbit secondary antibodies were used for the analysis.

JHDM2b Antibody (C-term) - Background

Histone demethylase that specifically demethylates 'Lys-9' of histone H3, thereby playing a central role in histone code. Demethylation of Lys residue generates formaldehyde and succinate. May have tumor suppressor activity.

JHDM2b Antibody (C-term) - References

Guo, G., et al. Dev. Cell 18(4):675-685(2010)
Allis, C.D., et al. Cell 131(4):633-636(2007)
Blackshaw, S., et al. PLoS Biol. 2 (9), E247 (2004) :
Okazaki, N., et al. DNA Res. 10(4):167-180(2003)
Stryke, D., et al. Nucleic Acids Res. 31(1):278-281(2003)