

CPA2 Antibody (Center)
Affinity Purified Rabbit Polyclonal Antibody (Pab)
Catalog # AP11457c**Specification**

CPA2 Antibody (Center) - Product Information

Application	WB,E
Primary Accession	P48052
Other Accession	NP_001860.2
Reactivity	Human
Host	Rabbit
Clonality	Polyclonal
Isotype	Rabbit IgG
Calculated MW	47030
Antigen Region	179-208

CPA2 Antibody (Center) - Additional Information**Gene ID** 1358**Other Names**

Carboxypeptidase A2, CPA2

Target/Specificity

This CPA2 antibody is generated from rabbits immunized with a KLH conjugated synthetic peptide between 179-208 amino acids from the Central region of human CPA2.

Dilution

WB~~1:1000

E~~Use at an assay dependent concentration.

Format

Purified polyclonal antibody supplied in PBS with 0.09% (W/V) sodium azide. This antibody is purified through a protein A column, followed by peptide affinity purification.

Storage

Maintain refrigerated at 2-8°C for up to 2 weeks. For long term storage store at -20°C in small aliquots to prevent freeze-thaw cycles.

Precautions

CPA2 Antibody (Center) is for research use only and not for use in diagnostic or therapeutic procedures.

CPA2 Antibody (Center) - Protein Information**Name** CPA2**Function** Carboxypeptidase that catalyzes the release of a C-terminal amino acid, with a

preference for large aromatic C-terminal residues.

Cellular Location

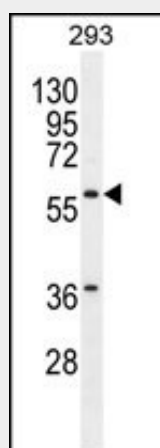
Secreted {ECO:0000250|UniProtKB:Q9UI42}.

CPA2 Antibody (Center) - Protocols

Provided below are standard protocols that you may find useful for product applications.

- [Western Blot](#)
- [Blocking Peptides](#)
- [Dot Blot](#)
- [Immunohistochemistry](#)
- [Immunofluorescence](#)
- [Immunoprecipitation](#)
- [Flow Cytometry](#)
- [Cell Culture](#)

CPA2 Antibody (Center) - Images



CPA2 Antibody (Center) (Cat. #AP11457c) western blot analysis in 293 cell line lysates (35ug/lane). This demonstrates the CPA2 antibody detected the CPA2 protein (arrow).

CPA2 Antibody (Center) - Background

Three different forms of human pancreatic procarboxypeptidase A have been isolated. The encoded protein represents the A2 form, which is a monomeric protein with different biochemical properties from the A1 and A3 forms. The A2 form of pancreatic procarboxypeptidase acts on aromatic C-terminal residues and is a secreted protein.

CPA2 Antibody (Center) - References

Maestrini, E., et al. Mol. Psychiatry 15(9):954-968(2010)
Rose, J.E., et al. Mol. Med. 16 (7-8), 247-253 (2010) :
Cerdeira-Costa, N., et al. Biochemistry 48(44):10582-10590(2009)
Dantas, G., et al. J. Mol. Biol. 366(4):1209-1221(2007)
Fu, G.K., et al. Genomics 84(1):205-210(2004)