

PM20D2 Antibody (C-term)
Affinity Purified Rabbit Polyclonal Antibody (Pab)
Catalog # AP11466b

Specification

PM20D2 Antibody (C-term) - Product Information

Application	WB, IHC-P, IF,E
Primary Accession	Q8IYS1
Other Accession	NP_001010853.1
Reactivity	Human
Host	Rabbit
Clonality	Polyclonal
Isotype	Rabbit IgG
Calculated MW	47776
Antigen Region	396-425

PM20D2 Antibody (C-term) - Additional Information

Gene ID 135293

Other Names

Peptidase M20 domain-containing protein 2, Aminoacylase-1-like protein 2, PM20D2, ACY1L2

Target/Specificity

This PM20D2 antibody is generated from rabbits immunized with a KLH conjugated synthetic peptide between 396-425 amino acids from the C-terminal region of human PM20D2.

Dilution

WB~~1:1000

IHC-P~~1:50~100

IF~~1:10~50

E~~Use at an assay dependent concentration.

Format

Purified polyclonal antibody supplied in PBS with 0.09% (W/V) sodium azide. This antibody is purified through a protein A column, followed by peptide affinity purification.

Storage

Maintain refrigerated at 2-8°C for up to 2 weeks. For long term storage store at -20°C in small aliquots to prevent freeze-thaw cycles.

Precautions

PM20D2 Antibody (C-term) is for research use only and not for use in diagnostic or therapeutic procedures.

PM20D2 Antibody (C-term) - Protein Information

Name PM20D2 {ECO:0000303|PubMed:24891507, ECO:0000312|HGNC:HGNC:21408}

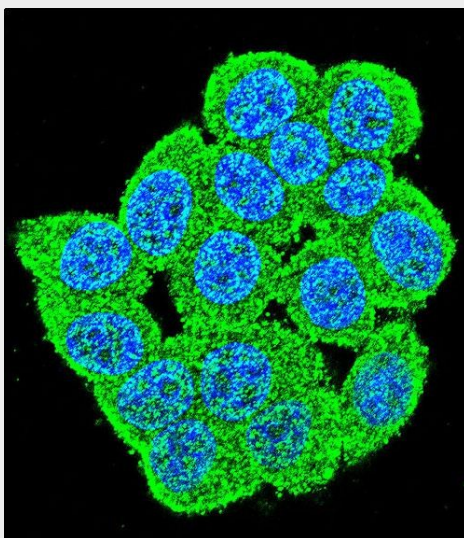
Function Catalyzes the peptide bond hydrolysis in dipeptides having basic amino acids lysine, ornithine or arginine at C-terminus. Postulated to function in a metabolite repair mechanism by eliminating alternate dipeptide by-products formed during carnosine synthesis.

PM20D2 Antibody (C-term) - Protocols

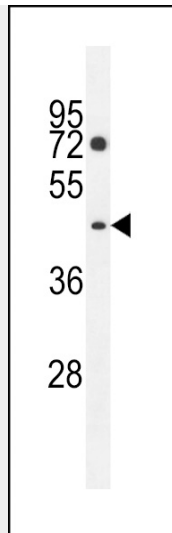
Provided below are standard protocols that you may find useful for product applications.

- [Western Blot](#)
- [Blocking Peptides](#)
- [Dot Blot](#)
- [Immunohistochemistry](#)
- [Immunofluorescence](#)
- [Immunoprecipitation](#)
- [Flow Cytometry](#)
- [Cell Culture](#)

PM20D2 Antibody (C-term) - Images



Confocal immunofluorescent analysis of PM20D2 Antibody (C-term)(Cat#AP11466b) with HeLa cell followed by Alexa Fluor 488-conjugated goat anti-rabbit IgG (green). DAPI was used to stain the cell nuclear (blue).



PM20D2 Antibody (C-term) (Cat. #AP11466b) western blot analysis in K562 cell line lysates (35ug/lane). This demonstrates the PM20D2 antibody detected the PM20D2 protein (arrow).



PM20D2 Antibody (C-term) (Cat. #AP11466b) immunohistochemistry analysis in formalin fixed and paraffin embedded human placenta tissue followed by peroxidase conjugation of the secondary antibody and DAB staining. This data demonstrates the use of PM20D2 Antibody (C-term) for immunohistochemistry. Clinical relevance has not been evaluated.

PM20D2 Antibody (C-term) - Background

PM20D2 belongs to the peptidase M20A family. The function of PM20D2 remains unknown.